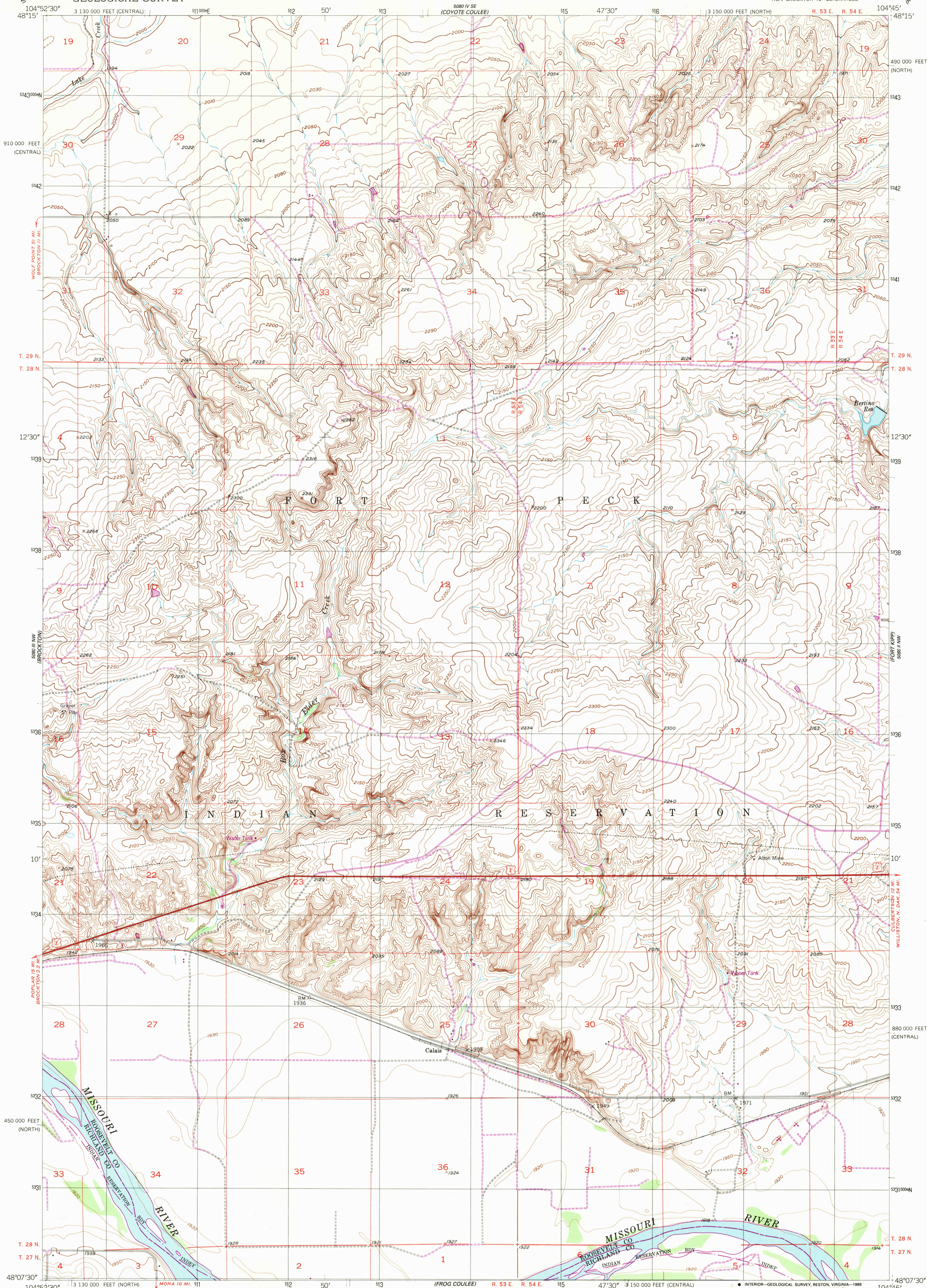


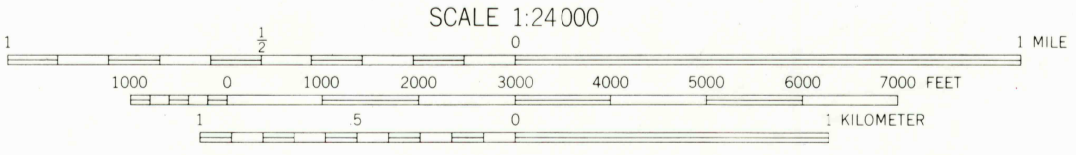
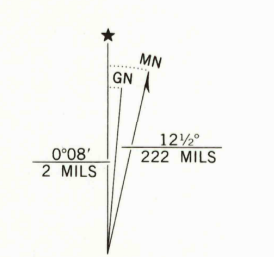
UNITED STATES  
DEPARTMENT OF THE INTERIOR  
GEOLOGICAL SURVEY

CALAIS QUADRANGLE  
MONTANA  
7.5 MINUTE SERIES (TOPOGRAPHIC)  
NE/4 BROCKTON 15' QUADRANGLE



USGS NMD HISTORICAL MAP  
AUG 18 1989  
REC'D FILE COPY

Mapped, edited, and published by the Geological Survey as part of the Department of the Interior program for the development of the Missouri River Basin Control by USGS and USC&GS  
Culture and drainage in part compiled from aerial photographs taken 1946. Topography by plane-table surveys 1947 and 1950  
Polyconic projection. 1927 North American datum 10,000-foot grid based on Montana coordinate system, north and central zones  
1000-meter Universal Transverse Mercator grid, zone 13  
To place on the predicted North American Datum 1983 move the projection lines 2 meters north and 40 meters east as shown by dashed corner ticks



CONTOUR INTERVAL 10 FEET  
NATIONAL GEODETIC VERTICAL DATUM OF 1929



- ROAD CLASSIFICATION
- Primary highway, hard surface
  - Light-duty road, hard or improved surface
  - Secondary highway, hard surface
  - Unimproved road
  - Interstate Route
  - U. S. Route
  - State Route

CALAIS, MONT.  
NE/4 BROCKTON 15' QUADRANGLE  
48104-B7-TF-024

THIS MAP COMPLIES WITH NATIONAL MAP ACCURACY STANDARDS  
FOR SALE BY U. S. GEOLOGICAL SURVEY, DENVER, COLORADO 80225 OR RESTON, VIRGINIA 22092  
A FOLDER DESCRIBING TOPOGRAPHIC MAPS AND SYMBOLS IS AVAILABLE ON REQUEST

Revisions shown in purple and woodland compiled from aerial photographs taken 1980 and other sources. This information not field checked. Map edited 1989

1950  
PHOTOREVISED 1989  
DMA 5080 III NE - SERIES V894