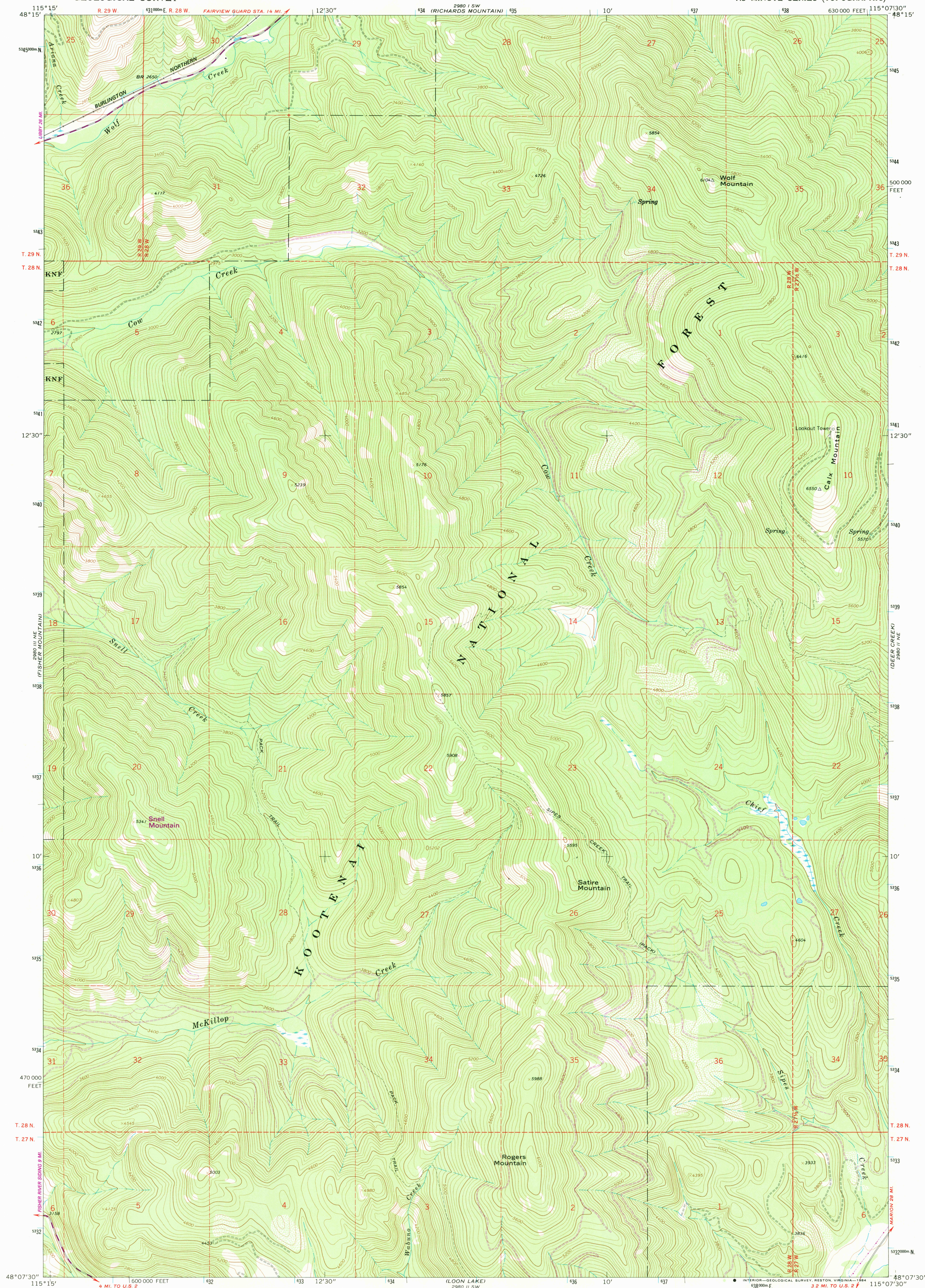


UNITED STATES
DEPARTMENT OF THE INTERIOR
GEOLOGICAL SURVEY

CALX MOUNTAIN QUADRANGLE
MONTANA—LINCOLN CO.
7.5 MINUTE SERIES (TOPOGRAPHIC)



Mapped, edited, and published by the Geological Survey

Control by USGS and NOS/NOAA

Topography by photogrammetric methods from aerial photographs taken 1965. Field checked 1966

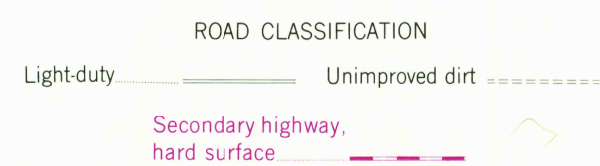
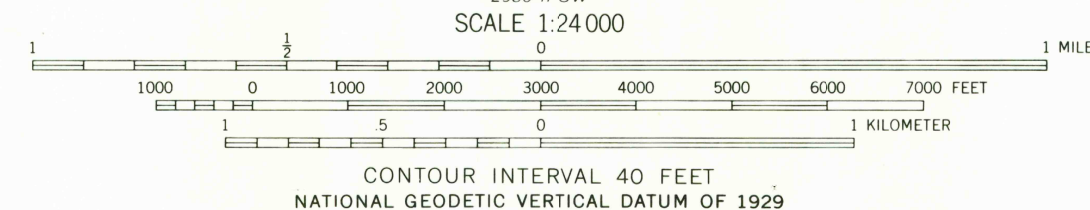
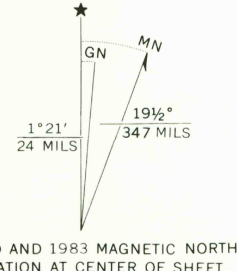
Polyconic projection. 1927 North American Datum

10,000-foot grid based on Montana coordinate system, north zone

1000-meter Universal Transverse Mercator grid ticks, zone 11, shown in blue

There may be private inholdings within the boundaries of the National or State reservations shown on this map

To place on the predicted North American Datum 1983 move the projection lines 12 meters north and 73 meters east as shown by dashed corner ticks



CALX MOUNTAIN, MONT.
48115-B2-TF-024

1966
PHOTOREVISED 1983
DMA 2980 II NW—SERIES V894

THIS MAP COMPLIES WITH NATIONAL MAP ACCURACY STANDARDS
FOR SALE BY U. S. GEOLOGICAL SURVEY, DENVER, COLORADO 80225, OR RESTON, VIRGINIA 22092
A FOLDER DESCRIBING TOPOGRAPHIC MAPS AND SYMBOLS IS AVAILABLE ON REQUEST

Revisions shown in purple and woodland
compiled from aerial photographs taken 1982
and other source data. Partial field check
by U. S. Forest Service. Map edited 1983

RETURN TO:
USGS AND HISTORICAL MAP ARCHIVES