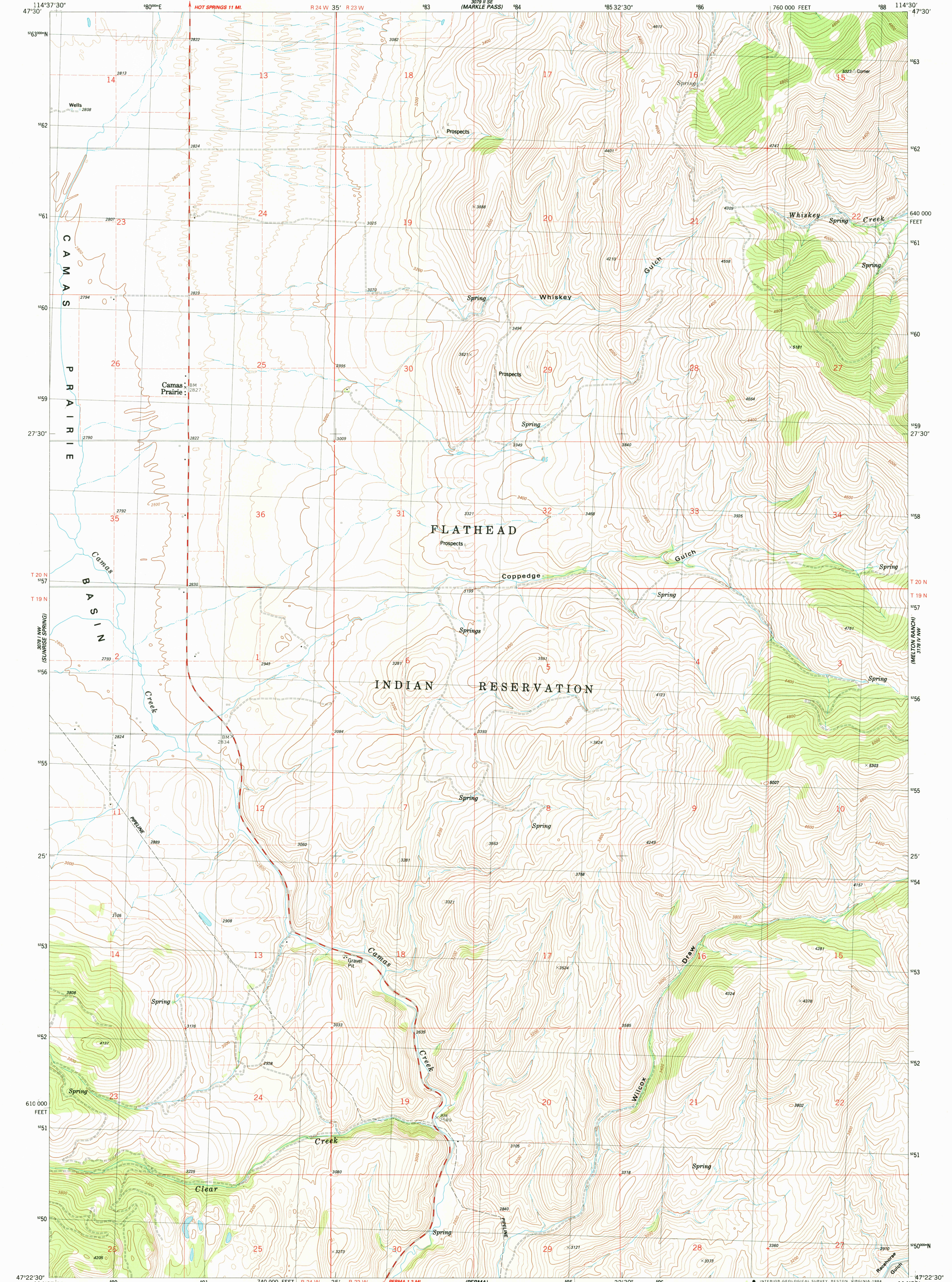


NE 1/4 PERMA 15' QUADRANGLE

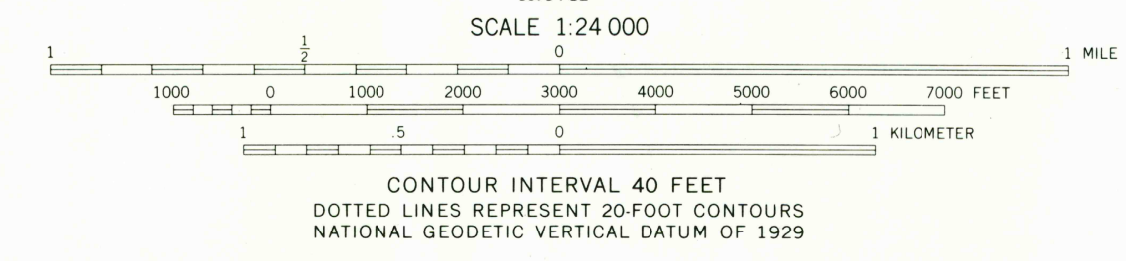
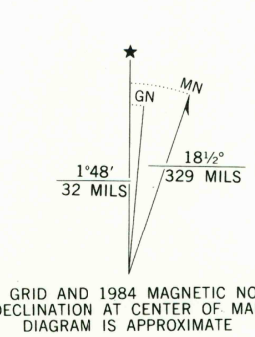
UNITED STATES  
DEPARTMENT OF THE INTERIOR  
GEOLOGICAL SURVEY

CAMAS PRAIRIE QUADRANGLE  
MONTANA-SANDERS CO  
7.5 MINUTE SERIES (TOPOGRAPHIC)  
NE 1/4 PERMA 15' QUADRANGLE

NE 1/4 PERMA 15' QUADRANGLE



Maped, edited, and published by the Geological Survey  
Control by USGS and NOS/NOAA  
Topography by photogrammetric methods from aerial photographs  
taken 1977. Field checked 1980. Map edited 1984  
Projection and 10,000-foot grid ticks: Montana  
coordinate system, central zone (Lambert conformal conic)  
1000-meter Universal Transverse Mercator grid, zone 11  
1927 North American Datum  
To place on the predicted North American Datum 1983  
move the projection lines 12 meters north and  
72 meters east as shown by dashed corner ticks  
Fine red dashed lines indicate selected fence lines  
There may be private inholdings within the boundaries of  
the National or State reservations shown on this map



ROAD CLASSIFICATION	
Primary highway, hard surface	Light duty road, hard or improved surface
Secondary highway, hard surface	Unimproved road
Interstate Route	U. S. Route
	State Route

CAMAS PRAIRIE, MONT.  
NE 1/4 PERMA 15' QUADRANGLE  
47114-D5-TF-024

1984

DMA 3078 1 NE-SERIES V894

THIS MAP COMPLIES WITH NATIONAL MAP ACCURACY STANDARDS  
FOR SALE BY U. S. GEOLOGICAL SURVEY, DENVER, COLORADO 80225, OR RESTON, VIRGINIA 22092  
A FOLDER DESCRIBING TOPOGRAPHIC MAPS AND SYMBOLS IS AVAILABLE ON REQUEST

RETURN TO 1  
USGS AND HISTORICAL MAP ARCHIVES