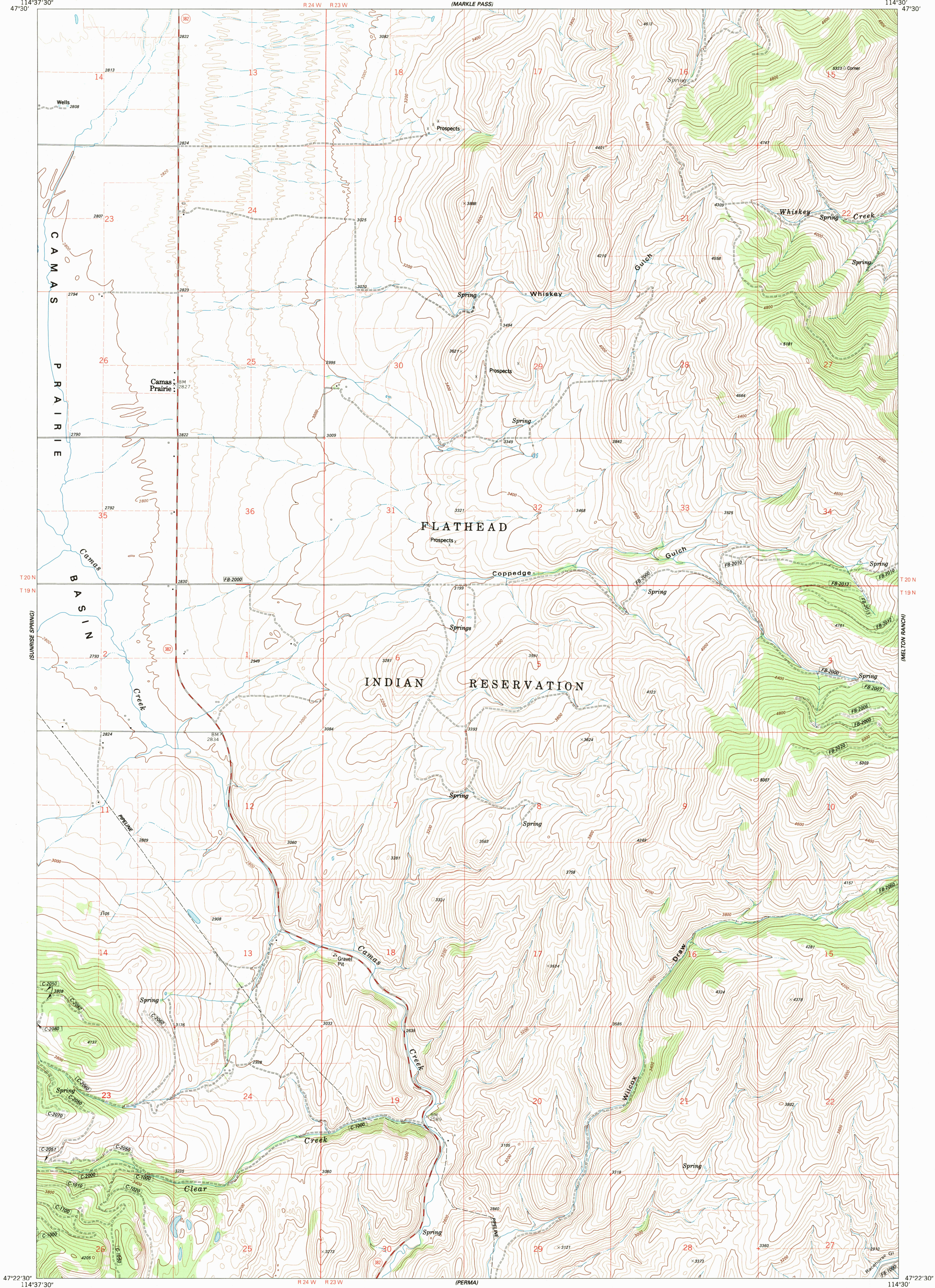


(HOT SPRINGS)

CAMAS PRAIRIE QUADRANGLE
FLATHEAD INDIAN RESERVATION
7.5 MINUTE SERIES (TOPOGRAPHIC)

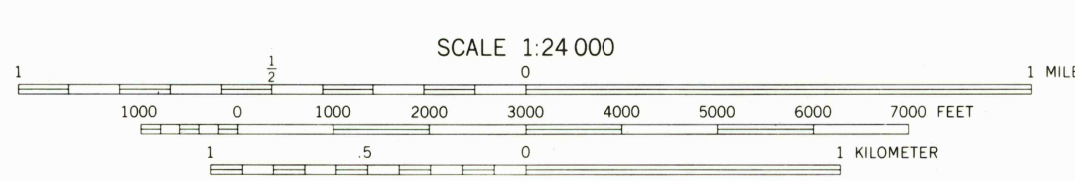
UNITED STATES
DEPARTMENT OF THE INTERIOR
BUREAU OF INDIAN AFFAIRS

(OLIVER POINT)



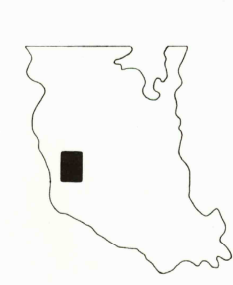
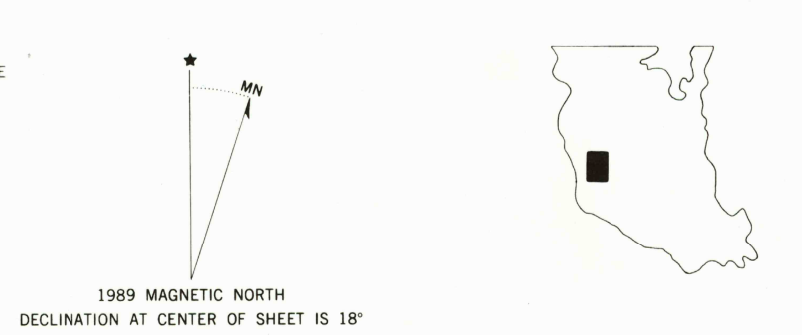
(KNOWLES)

LEGEND	
Paved road	County
Surface light duty or improved dirt road	Reservation
Unimproved dirt road	Tribal Wilderness
Four wheel drive trail	Tribal Primitive Area
Route designation shield	Power transmission line
RAILROADS	CFI Pic location
Single track	Aerial photo centers 1980 & 1981 flight
LAND LINES	Indicated corner
Surveyed	Found corner
Protected	
Fence lines	



CONTOUR INTERVAL 40 FEET
DOTTED LINES REPRESENT 20-FOOT CONTOURS
DATUM IS MEAN SEA LEVEL
NATIONAL GEODETIC VERTICAL DATUM OF 1929
CONTROL BY USGS AND NOS/NOAA

Prepared by the Geological Survey for
the Bureau of Indian Affairs, Flathead Agency
Compiled in 1989 from USGS 1:24,000-scale quadrangle dated 1984
Revised from aerial photographs taken 1976 and other source data provided by BIA



(MC DONALD)

RETURN TO:
USGS NHD HISTORICAL MAP ARCHIVES

CAMAS PRAIRIE, MONT.
FLATHEAD INDIAN RESERVATION
SANDERS CO.