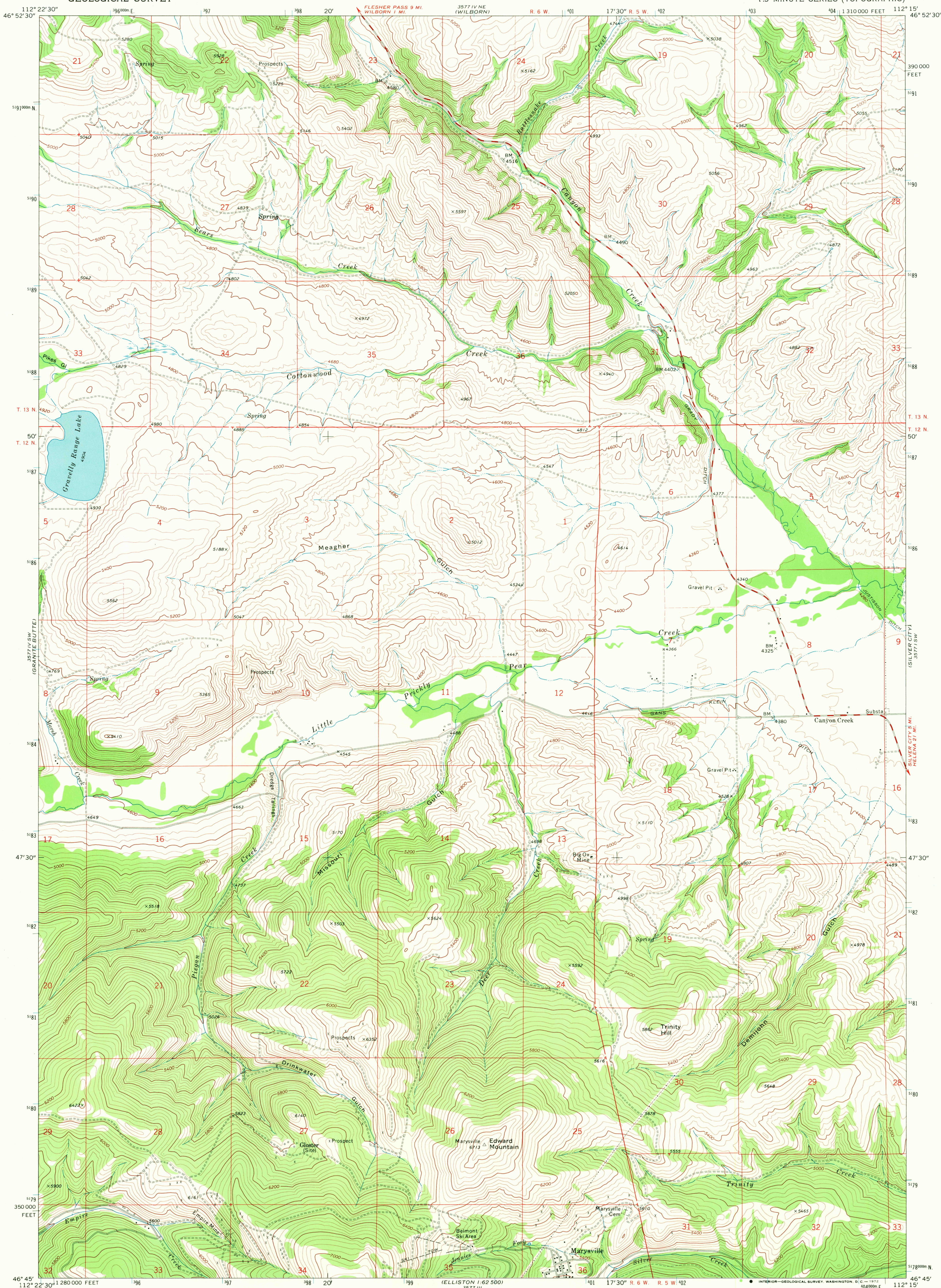
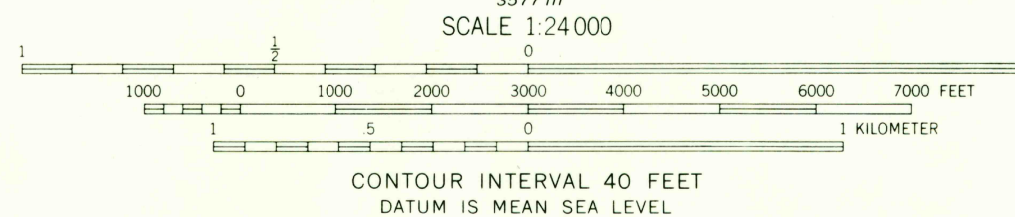
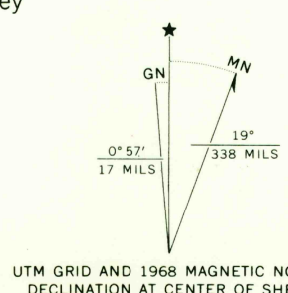


UNITED STATES  
DEPARTMENT OF THE INTERIOR  
GEOLOGICAL SURVEY

CANYON CREEK QUADRANGLE  
MONTANA—LEWIS AND CLARK CO.  
7.5 MINUTE SERIES (TOPOGRAPHIC)



Mapped, edited, and published by the Geological Survey  
Control by USGS, USC&GS and U.S. Forest Service  
Topography by photogrammetric methods from aerial  
photographs taken 1967. Field checked 1968  
Polyconic projection. 1927 North American datum  
10,000-foot grid based on Montana coordinate system,  
central zone  
1000-meter Universal Transverse Mercator grid ticks,  
zone 12, shown in blue  
Fine red dashed lines indicate selected fence lines



ROAD CLASSIFICATION  
Secondary highway, all weather, Light-duty road, all weather,  
hard surface improved surface  
Unimproved road, fair or dry  
weather

CANYON CREEK, MONT.  
N4645—W11215/7.5

1968

AMS 3577 IV SE—SERIES V894

USGS  
HISTORICAL FILE  
TOPOGRAPHIC DIVISION

JUN 05 1972  
2230