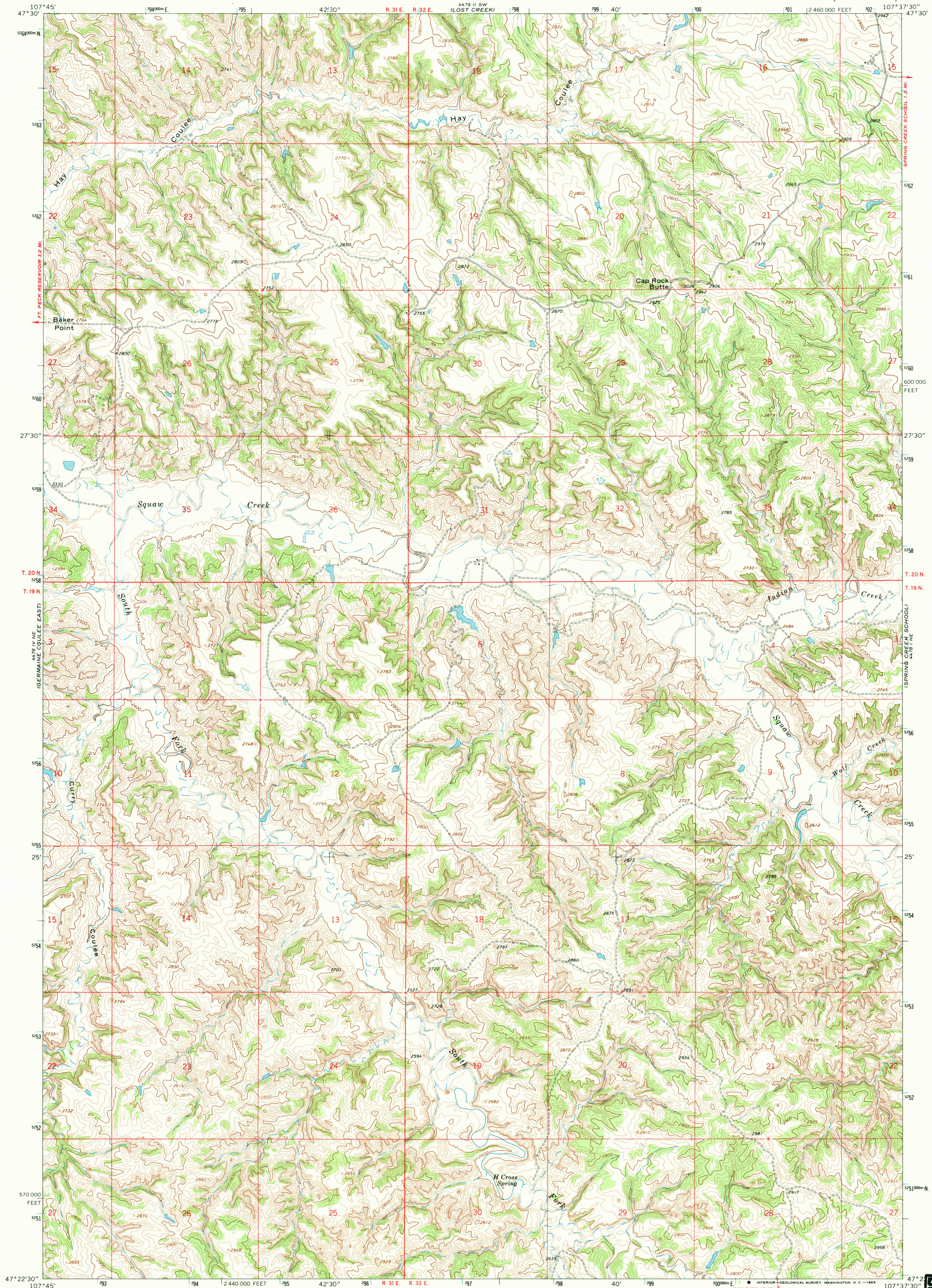
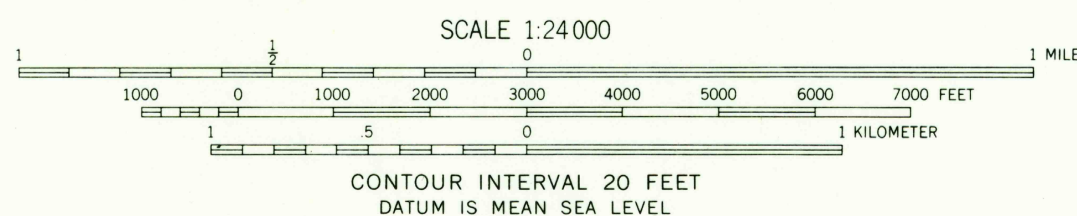
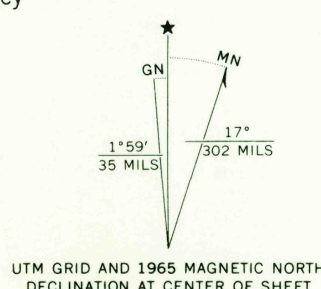


UNITED STATES
DEPARTMENT OF THE INTERIOR
GEOLOGICAL SURVEY

CAP ROCK BUTTE QUADRANGLE
MONTANA—GARFIELD CO.
7.5 MINUTE SERIES (TOPOGRAPHIC)



Maped, edited, and published by the Geological Survey as part of the Department of the Interior program for the development of the Missouri River Basin Control by USGS and USC&GS
Topography by photogrammetric methods from aerial photographs taken 1964. Field checked 1965
Polyconic projection. 1927 North American datum. 10,000-foot grid based on Montana coordinate system, central zone
1000-meter Universal Transverse Mercator grid ticks, zone 13, shown in blue



ROAD CLASSIFICATION
Light-duty ——— Unimproved dirt ———

CAP ROCK BUTTE, MONT.
N4722.5—W10737.5/7.5

1965

AMS 4478 I NW—SERIES V894

USGS
FILE COPY
TOPOGRAPHIC DIVISION

USGS
Historical File
Topographic Division
AUG 13 1969