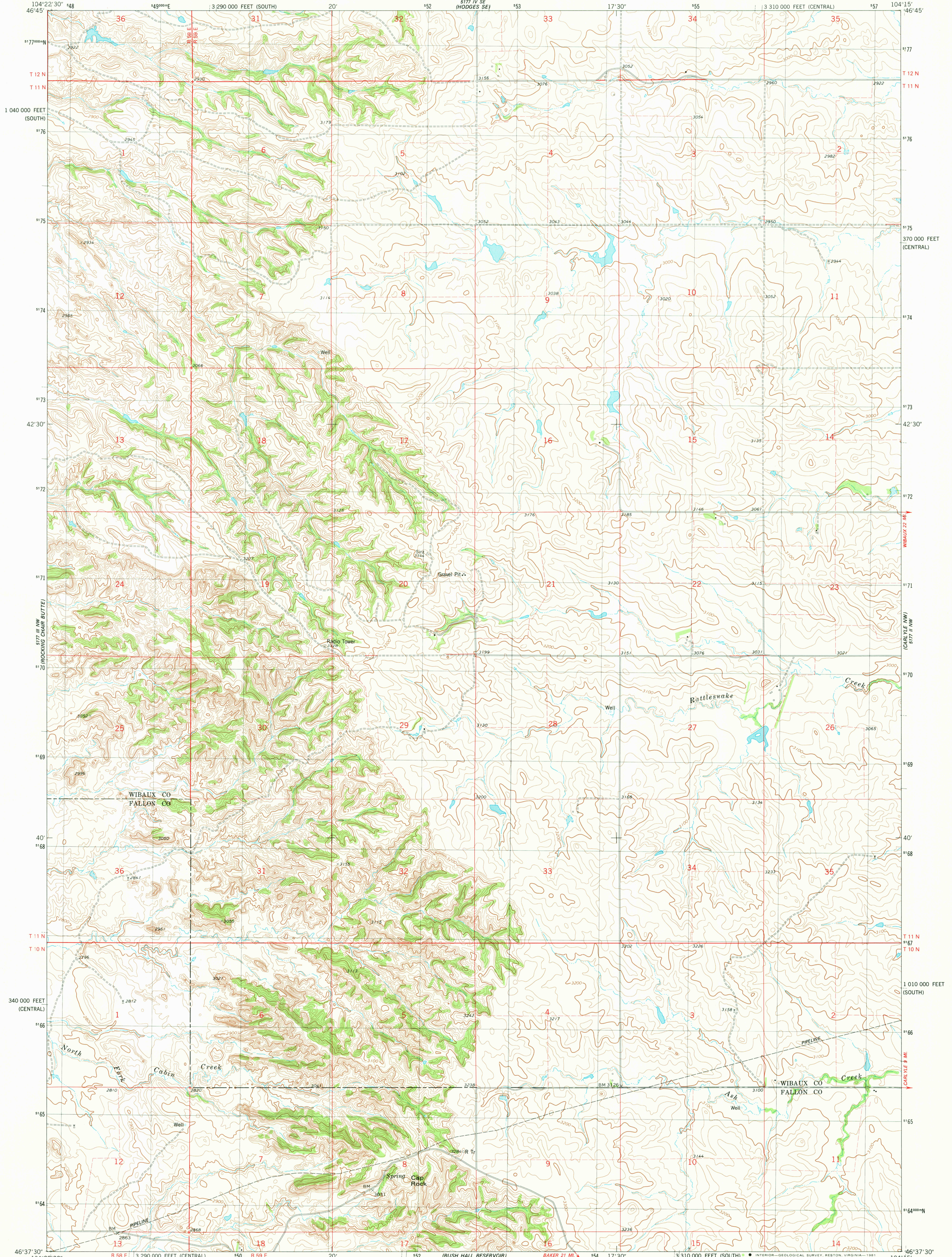


5177 IV SW  
(HODGES SW)

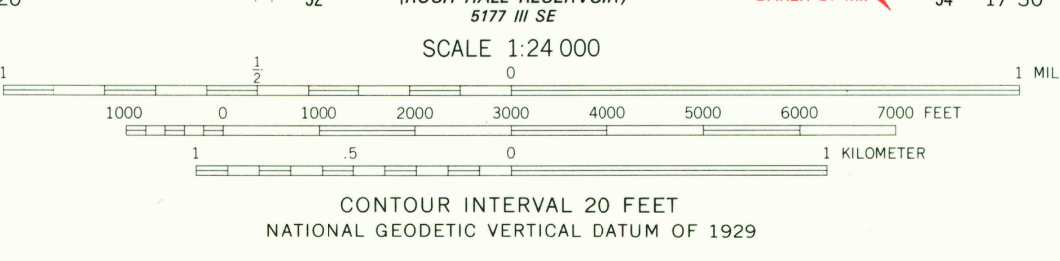
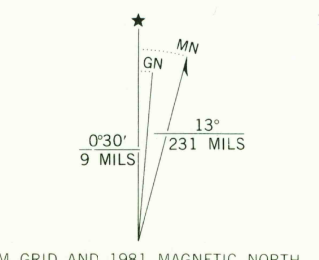
UNITED STATES  
DEPARTMENT OF THE INTERIOR  
GEOLOGICAL SURVEY

CAP ROCK QUADRANGLE  
MONTANA  
7.5 MINUTE SERIES (TOPOGRAPHIC)

5177 IV SE  
(RED TOP BUTTE)



Mapped, edited, and published by the Geological Survey  
Control by USGS and NOS/NOAA  
Topography by photogrammetric methods from aerial photographs  
taken 1974. Field checked 1976. Map edited 1981  
Projection: Montana coordinate system, central zone  
(Lambert conformal conic)  
10,000-foot grid ticks based on Montana coordinate  
system, central and south zones  
1000-meter Universal Transverse Mercator grid, zone 13  
1927 North American datum  
To place on the predicted North American Datum 1983  
move the projection lines 4 meters north and  
40 meters east as shown by dashed corner ticks  
Fine red dashed lines indicate selected fence lines



ROAD CLASSIFICATION	
Primary highway, hard surface	Light-duty road, hard or improved surface
Secondary highway, hard surface	Unimproved road
Interstate Route	U.S. Route
	State Route

CAP ROCK, MONT.  
N4637.5-W10415/7.5  
1981  
DMA 5177 III NE-SERIES V894

RETURN TO:  
USGS NMD HISTORICAL MAP ARCHIVES

OCT 27 1981

1902