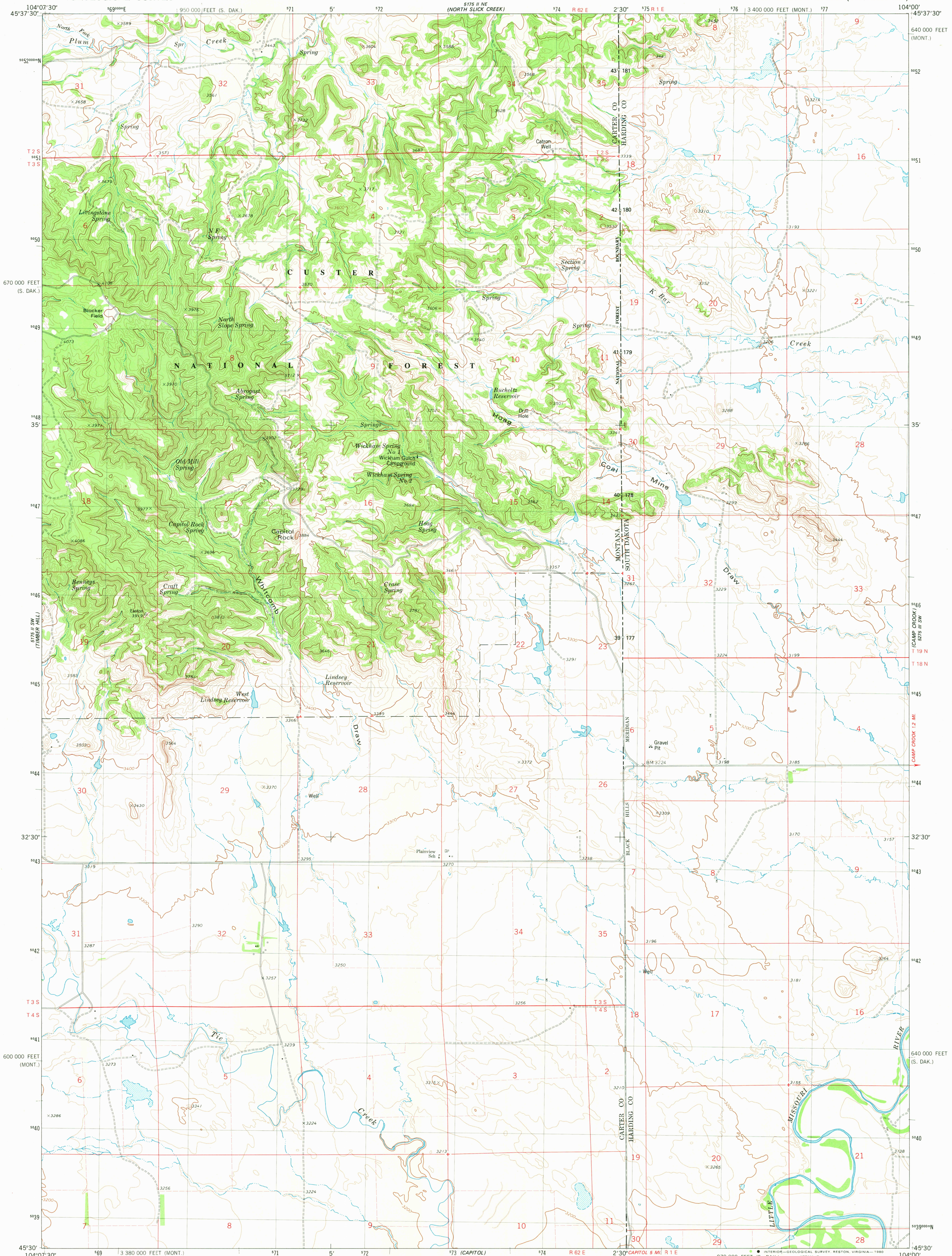


UNITED STATES
DEPARTMENT OF THE INTERIOR
GEOLOGICAL SURVEY

CAPITOL ROCK QUADRANGLE
MONTANA-SOUTH DAKOTA
7.5 MINUTE SERIES (TOPOGRAPHIC)



Mapped, edited, and published by the Geological Survey

Control by USGS, NOS/NOAA, and U.S. Forest Service

Topography by photogrammetric methods from aerial photographs

taken 1972. Field checked 1974. Map edited 1980

Projection: Montana coordinate system, south zone

(Lambert conformal conic)

10,000-foot grid ticks based on Montana coordinate system, south zone

and South Dakota system, north zone

1000-meter Universal Transverse Mercator grid, zone 13

1927 North American datum

To place on the predicted North American Datum 1983

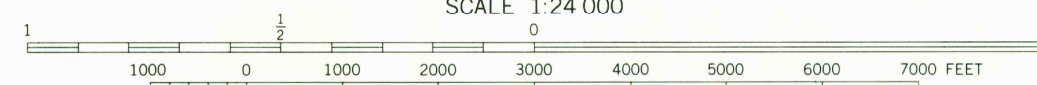
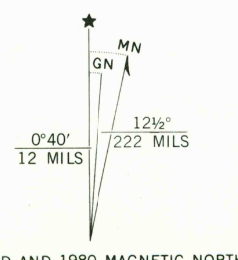
move the projection lines 4 meters north and

40 meters east as shown by dashed corner ticks

Fine red dashed lines indicate selected fence lines

There may be private inholdings within the boundaries of the

National or State reservations shown on this map



CONTOUR INTERVAL 20 FEET
NATIONAL GEODETIC VERTICAL DATUM OF 1929

THIS MAP COMPLIES WITH NATIONAL MAP ACCURACY STANDARDS
FOR SALE BY U.S. GEOLOGICAL SURVEY, DENVER, COLORADO 80225, OR RESTON, VIRGINIA 22092
A FOLDER DESCRIBING TOPOGRAPHIC MAPS AND SYMBOLS IS AVAILABLE ON REQUEST



ROAD CLASSIFICATION	
Primary highway, hard surface	Light-duty road, hard or improved surface
Secondary highway, hard surface	Unimproved road
Interstate Route	U.S. Route
	State Route

CAPITOL ROCK, MONT.-S. DAK.
N4530-W10400/7.5

1980

DMA 5175 II SE-SERIES V894

NOV - 5 1980
1950