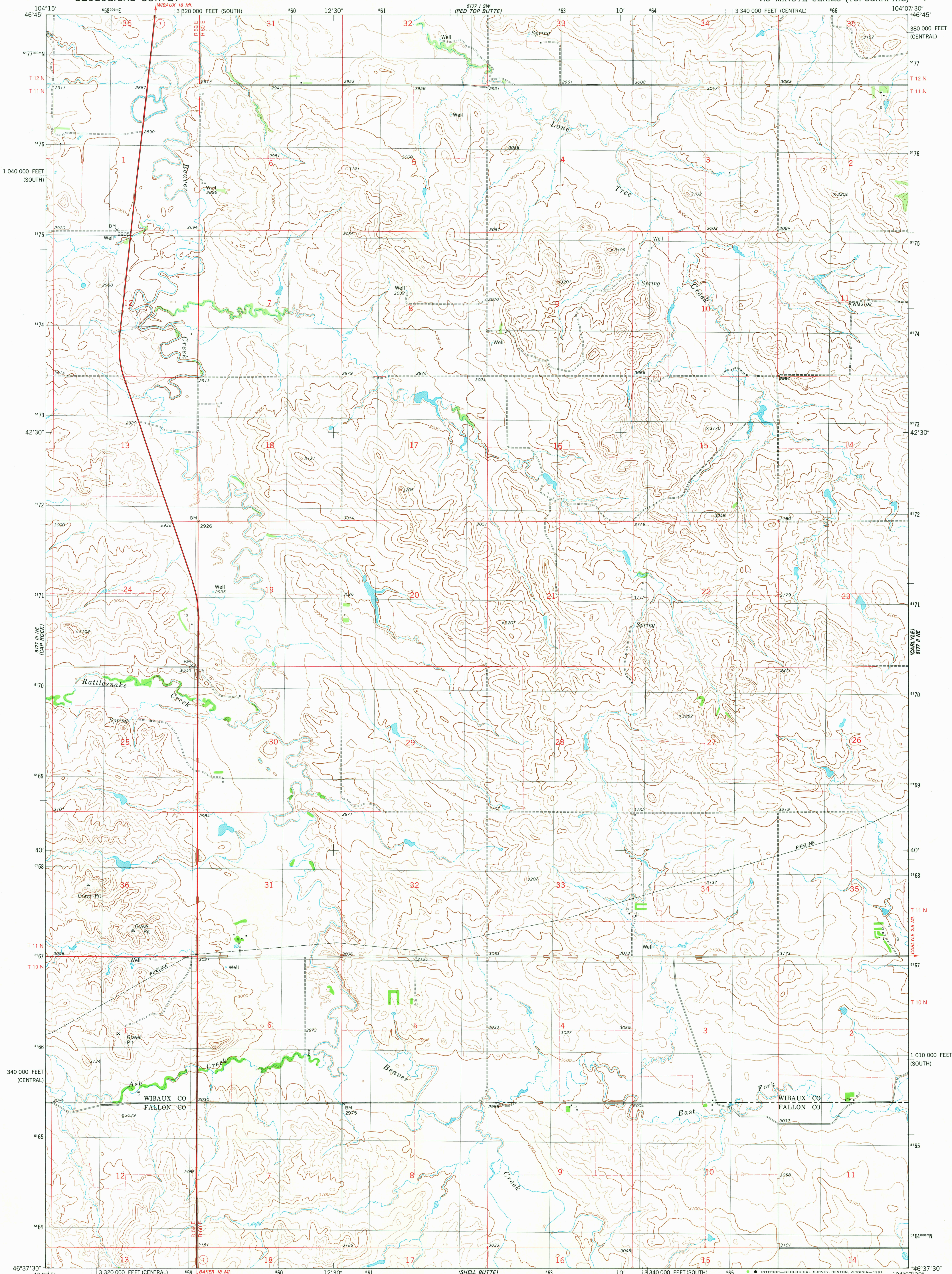


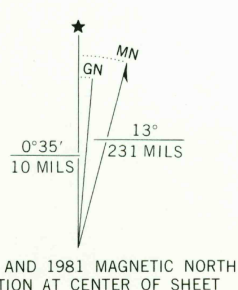
UNITED STATES  
DEPARTMENT OF THE INTERIOR  
GEOLOGICAL SURVEY

CARLYLE NW QUADRANGLE  
MONTANA  
7.5 MINUTE SERIES (TOPOGRAPHIC)

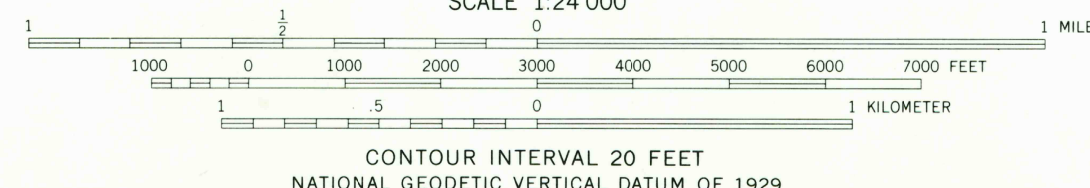


Mapped, edited, and published by the Geological Survey

Control by USGS and NOS/NOAA  
Topography by photogrammetric methods from aerial photographs taken 1974. Field checked 1976. Map edited 1981  
Projection: Montana coordinate system, central zone (Lambert conformal conic)  
10,000-foot grid ticks based on Montana coordinate system, central and south zones  
1000-meter Universal Transverse Mercator grid, zone 13 1927 North American datum  
To place on the predicted North American Datum 1983 move the projection lines 4 meters north and 40 meters east as shown by dashed corner ticks  
Fine red dashed lines indicate selected fence lines



SCALE 1:24 000



ROAD CLASSIFICATION

Primary highway, hard surface	Light-duty road, hard or improved surface
Secondary highway, hard surface	Unimproved road
Interstate Route	U.S. Route
	State Route

CARLYLE NW, MONT.  
N4637.5-W10407.5/7.5

1981

DMA 5177 II NW-SERIES V894

RETURN TO:  
USGS MMD HISTORICAL MAP ARCHIVES

DEC 4 1981

1900