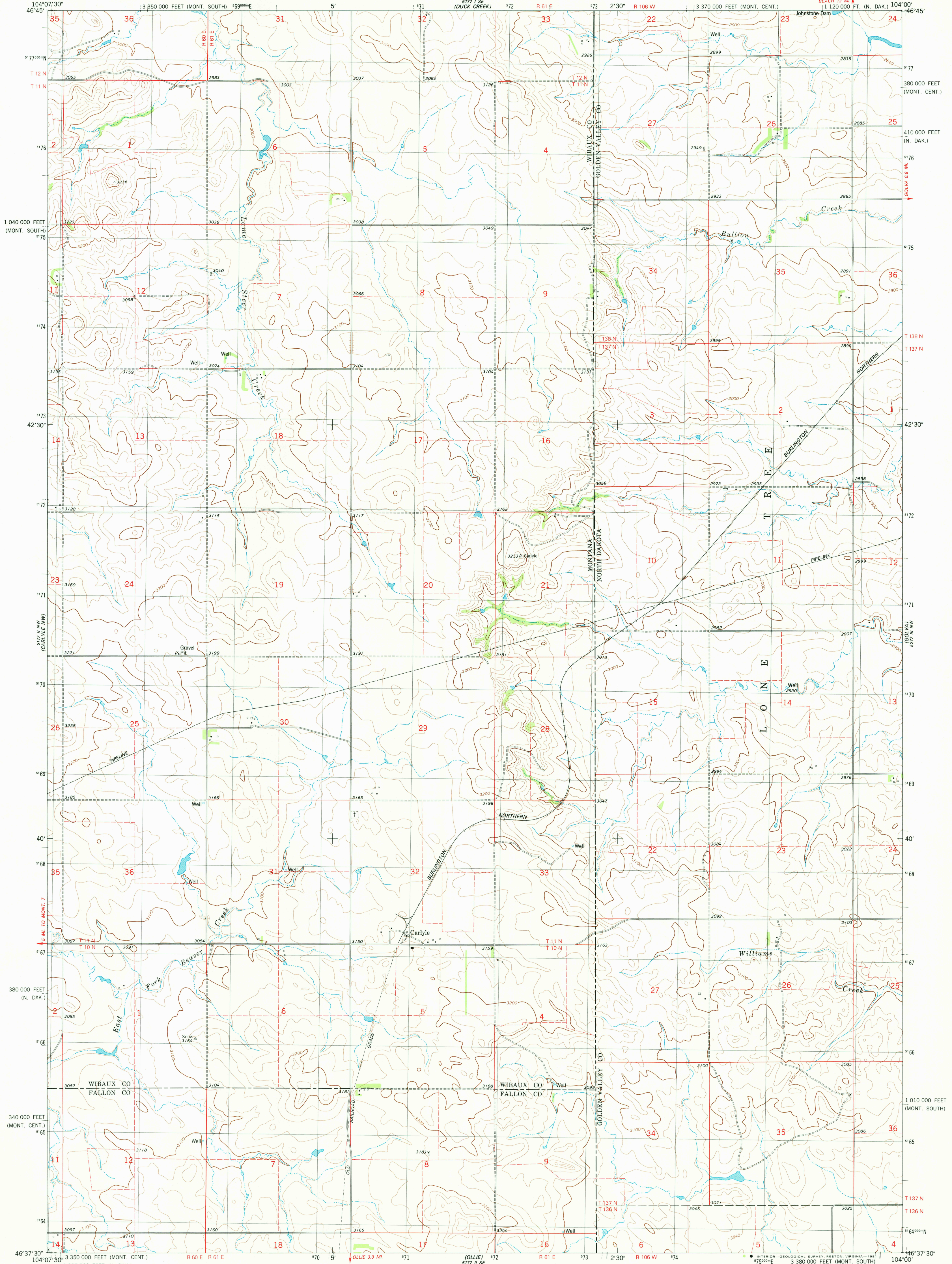
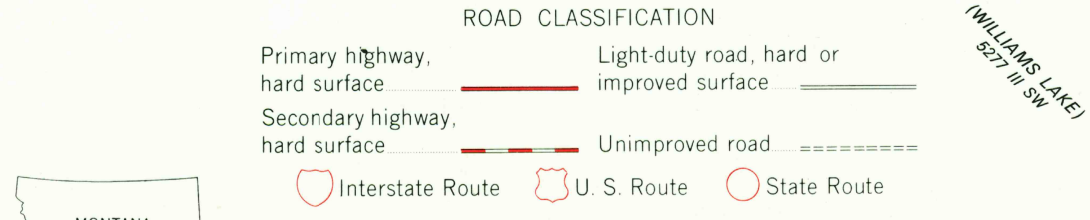
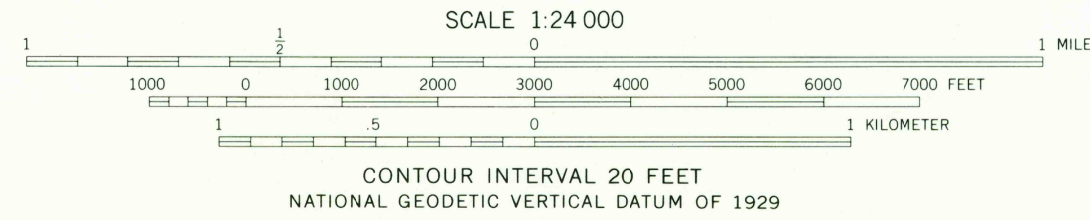
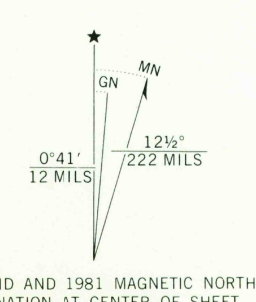


UNITED STATES  
DEPARTMENT OF THE INTERIOR  
GEOLOGICAL SURVEY

CARLYLE QUADRANGLE  
MONTANA-NORTH DAKOTA  
7.5 MINUTE SERIES (TOPOGRAPHIC)



Mapped, edited, and published by the Geological Survey  
Control by USGS, NOS/NOAA, and USFS  
Topography by photogrammetric methods from aerial photographs  
taken 1974. Field checked 1976. Map edited 1981  
Projection: Montana coordinate system, central zone  
(Lambert conformal conic)  
10,000-foot grid ticks based on Montana coordinate system  
central and south zones, and North Dakota coordinate system,  
south zone  
1000-meter Universal Transverse Mercator grid, zone 13  
1927 North American datum  
To place on the predicted North American Datum 1983  
move the projection lines 4 meters north and  
39 meters east as shown by dashed corner ticks  
Fine red dashed lines indicate selected fence lines



CARLYLE, MONT.-N. DAK.  
N4637.5-W10400/7.5

1981

DMA 5177 II NE-SERIES V894

DEC 23 1981

RETURN TO:  
USGS AND HISTORICAL MAP ARCHIVES