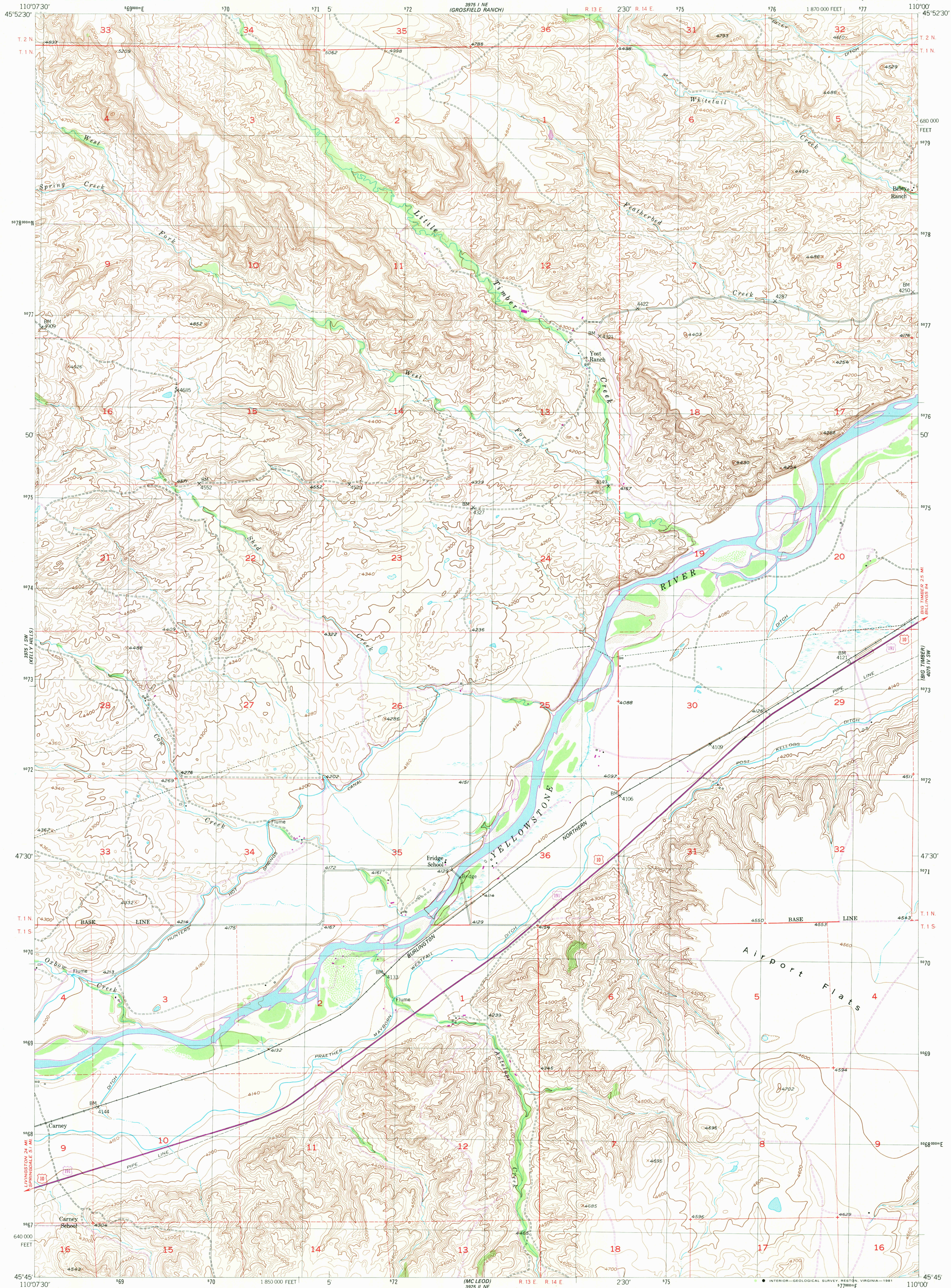


UNITED STATES
DEPARTMENT OF THE INTERIOR
GEOLOGICAL SURVEY

CARNEY QUADRANGLE
MONTANA-SWEET GRASS CO.
7.5 MINUTE SERIES (TOPOGRAPHIC)



Maped, edited, and published by the Geological Survey
as part of the Department of the Interior program
for the development of the Missouri River Basin

Control by USGS and NOS/NOAA

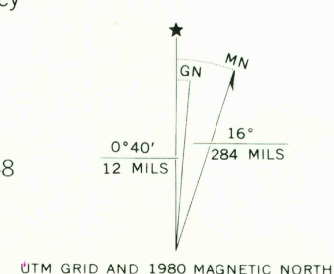
Topography from aerial photographs by multiplex methods
and by plane-table surveys 1951. Aerial photographs taken 1948

Polyconic projection. 1927 North American datum
10,000-foot grid based on Montana coordinate system,
south zone

Dashed land lines indicate approximate locations

1000-meter Universal Transverse Mercator grid,
zone 12.

To place on the predicted North American Datum 1983
move the projection lines 10 meters north and
61 meters east as shown by dashed corner ticks



SCALE 1:24 000
1 000 0 1000 2000 3000 4000 5000 6000 7000 FEET
1 0 1 KILOMETER
CONTOUR INTERVAL 20 FEET
NATIONAL GEODETIC VERTICAL DATUM OF 1929

THIS MAP COMPLIES WITH NATIONAL MAP ACCURACY STANDARDS
FOR SALE BY U. S. GEOLOGICAL SURVEY, DENVER, COLORADO 80225, OR RESTON, VIRGINIA 22092
A FOLDER DESCRIBING TOPOGRAPHIC MAPS AND SYMBOLS IS AVAILABLE ON REQUEST



QUADRANGLE LOCATION

Revisions shown in purple compiled
from aerial photographs taken 1977
and other source data. This information
not field checked. Map edited 1980

ROAD CLASSIFICATION

Heavy-duty 4 LANE 1 LANE Light-duty
Medium-duty 4 LANE 1 LANE Unimproved dirt
U. S. Route State Route

CARNEY, MONT.
N4545-W11000/7.5

1951
PHOTOREVISED 1980
DMA 3975 1 SE-SERIES V894

SEP 28 1981

2050
USGS
HISTORICAL FILE
NATIONAL MAPPING DIVISION