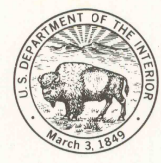


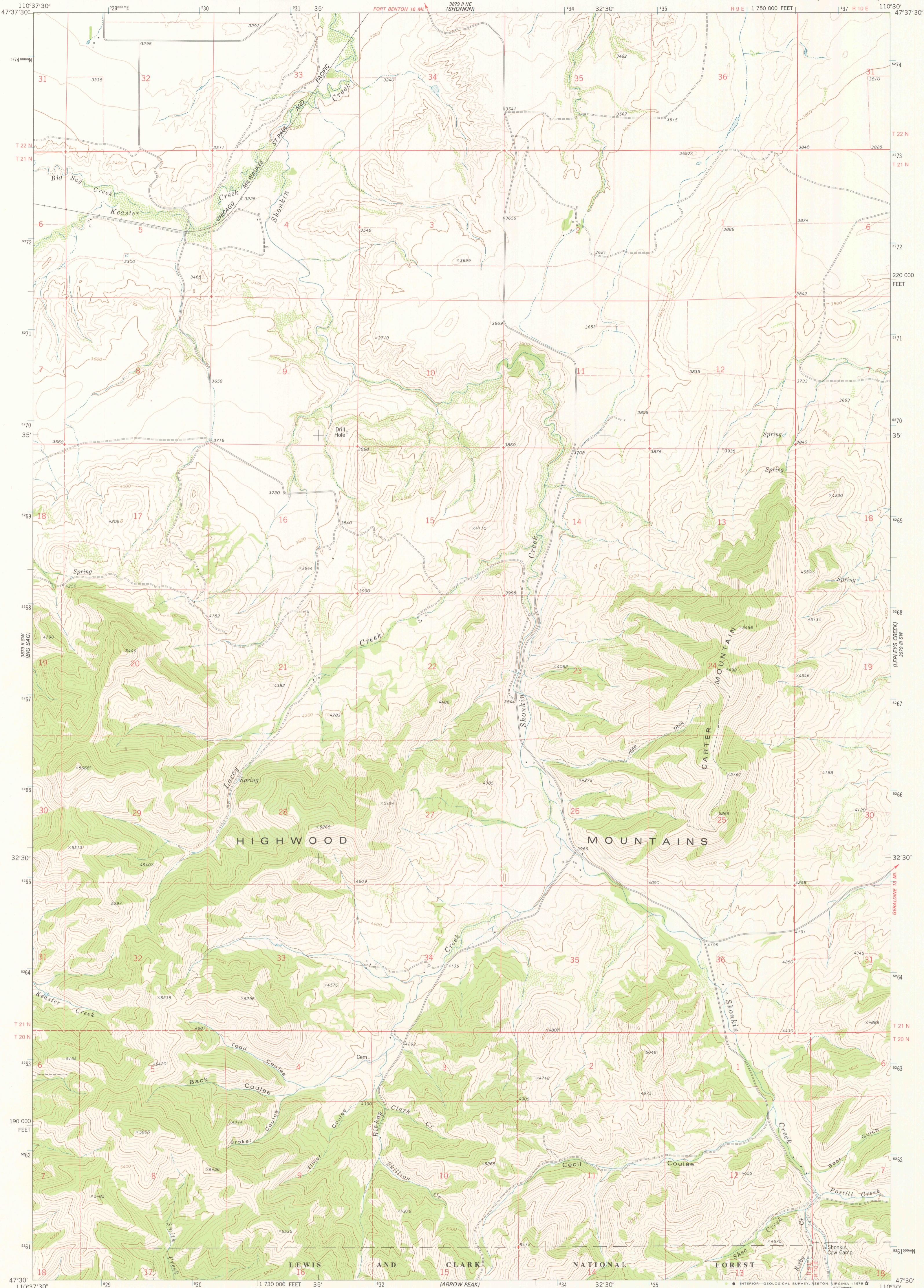
3879 II NW
(SPOTLIGHT VIEW)

UNITED STATES
DEPARTMENT OF THE INTERIOR
GEOLOGICAL SURVEY



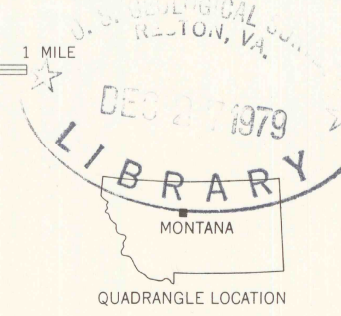
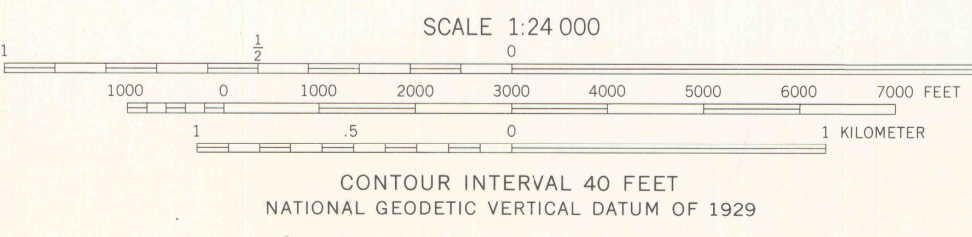
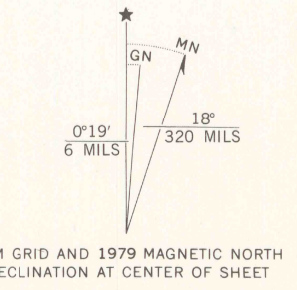
CARTER MOUNTAIN QUADRANGLE
MONTANA—CHOUTEAU CO.
7.5 MINUTE SERIES (TOPOGRAPHIC)

3879 II NE
(MONTAGUE)



3879 II SW
(BIG SAC)

Mapped, edited, and published by the Geological Survey
Control by USGS and NOS/NOAA
Topography by photogrammetric methods from aerial photographs
taken 1971. Field checked 1973. Map edited 1979
Projection and 10,000-foot grid ticks: Montana
coordinate system, north zone (Lambert conformal conic)
100-meter Universal Transverse Mercator grid ticks,
zone 12, shown in blue. 1927 North American datum
Fine red dashed lines indicate selected fence lines
There may be private inholdings within the boundaries of the
National or State reservations shown on this map



ROAD CLASSIFICATION

Primary highway, hard surface	Light-duty road, hard or improved surface
Secondary highway, hard surface	Unimproved road
Interstate Route	U. S. Route
	State Route

CARTER MOUNTAIN, MONT.
N4730-W1030/7.5

1979

DMA 3879 II SE—SERIES B84

THIS MAP COMPLIES WITH NATIONAL MAP ACCURACY STANDARDS
FOR SALE BY U. S. GEOLOGICAL SURVEY, DENVER, COLORADO 80225, OR RESTON, VIRGINIA 22092
A FOLDER DESCRIBING TOPOGRAPHIC MAPS AND SYMBOLS IS AVAILABLE ON REQUEST

3879 II SE
(RELEASE SITE)