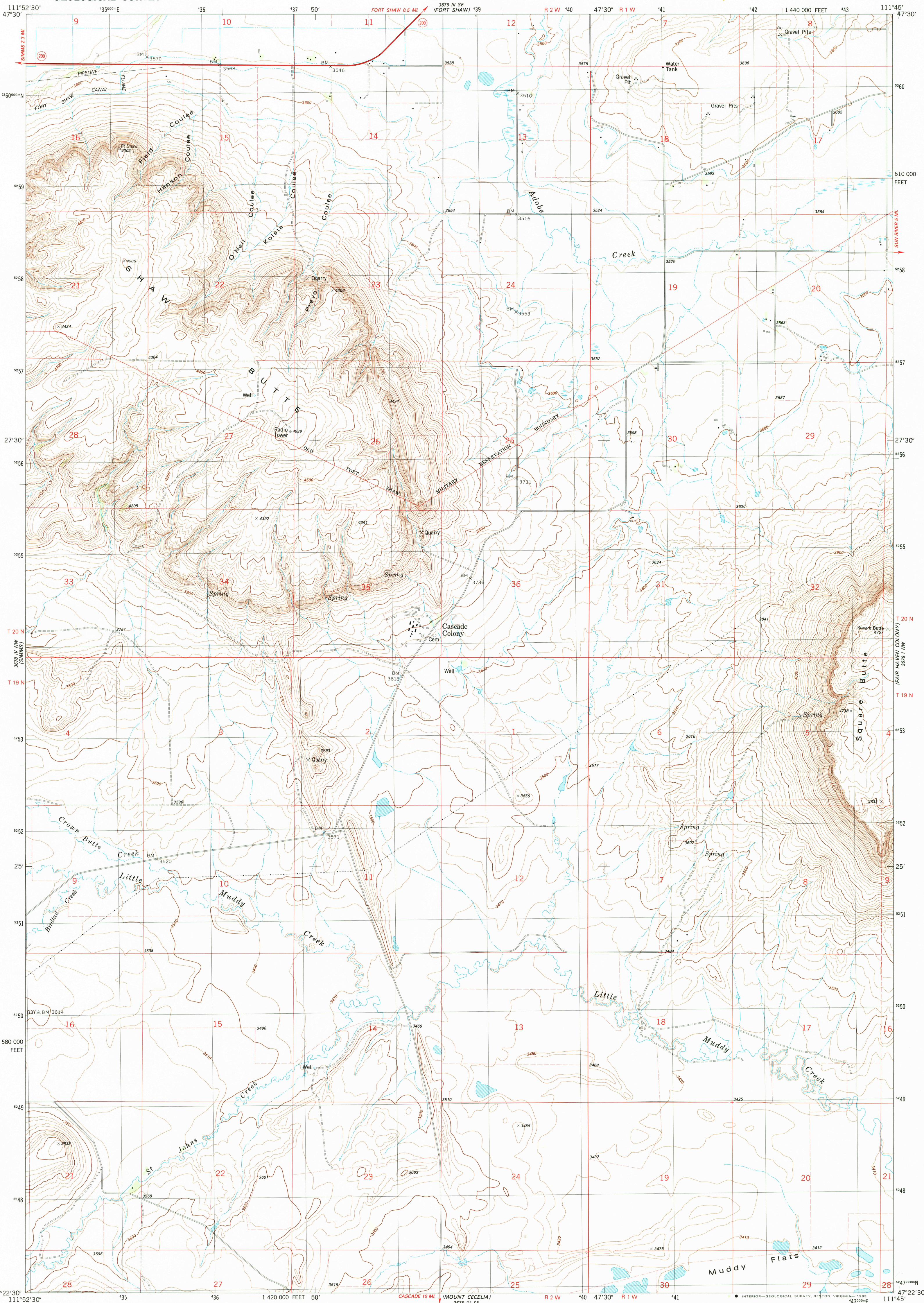
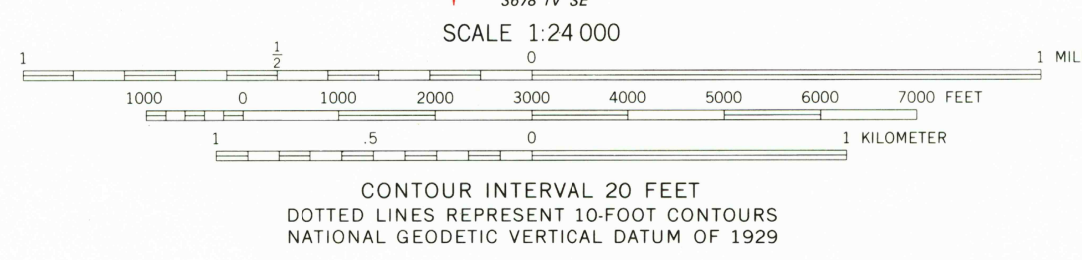


UNITED STATES  
DEPARTMENT OF THE INTERIOR  
GEOLOGICAL SURVEY

CASCADE COLONY QUADRANGLE  
MONTANA-CASCADE CO.  
7.5 MINUTE SERIES (TOPOGRAPHIC)  
NE 1/4 SIMMS 15' QUADRANGLE



Mapped, edited, and published by the Geological Survey  
Control by USGS and NOS/NOAA  
Topography by photogrammetric methods from aerial photographs  
taken 1975. Field checked 1978. Map edited 1983  
Projection and 10,000-foot grid ticks: Montana  
coordinate system, central zone (Lambert conformal conic)  
1000-meter Universal Transverse Mercator grid, zone 12  
1927 North American datum  
To place on the predicted North American Datum 1983  
move the projection lines 9 meters north and  
64 meters east as shown by dashed corner ticks  
Fine red dashed lines indicate selected fence lines



ROAD CLASSIFICATION  
Primary highway, hard surface  
Secondary highway, hard surface  
Light-duty road, hard or improved surface  
Unimproved road  
Interstate Route  
U. S. Route  
State Route



CASCADE COLONY, MONT.  
NE 1/4 SIMMS 15' QUADRANGLE  
N4722.5-W11145/7.5  
1983

APR 16 1984  
USGS AND HISTORICAL MAP ARCHIVES

THIS MAP COMPLIES WITH NATIONAL MAP ACCURACY STANDARDS  
FOR SALE BY U.S. GEOLOGICAL SURVEY, DENVER, COLORADO 80225, OR RESTON, VIRGINIA 22092  
A FOLDER DESCRIBING TOPOGRAPHIC MAPS AND SYMBOLS IS AVAILABLE ON REQUEST