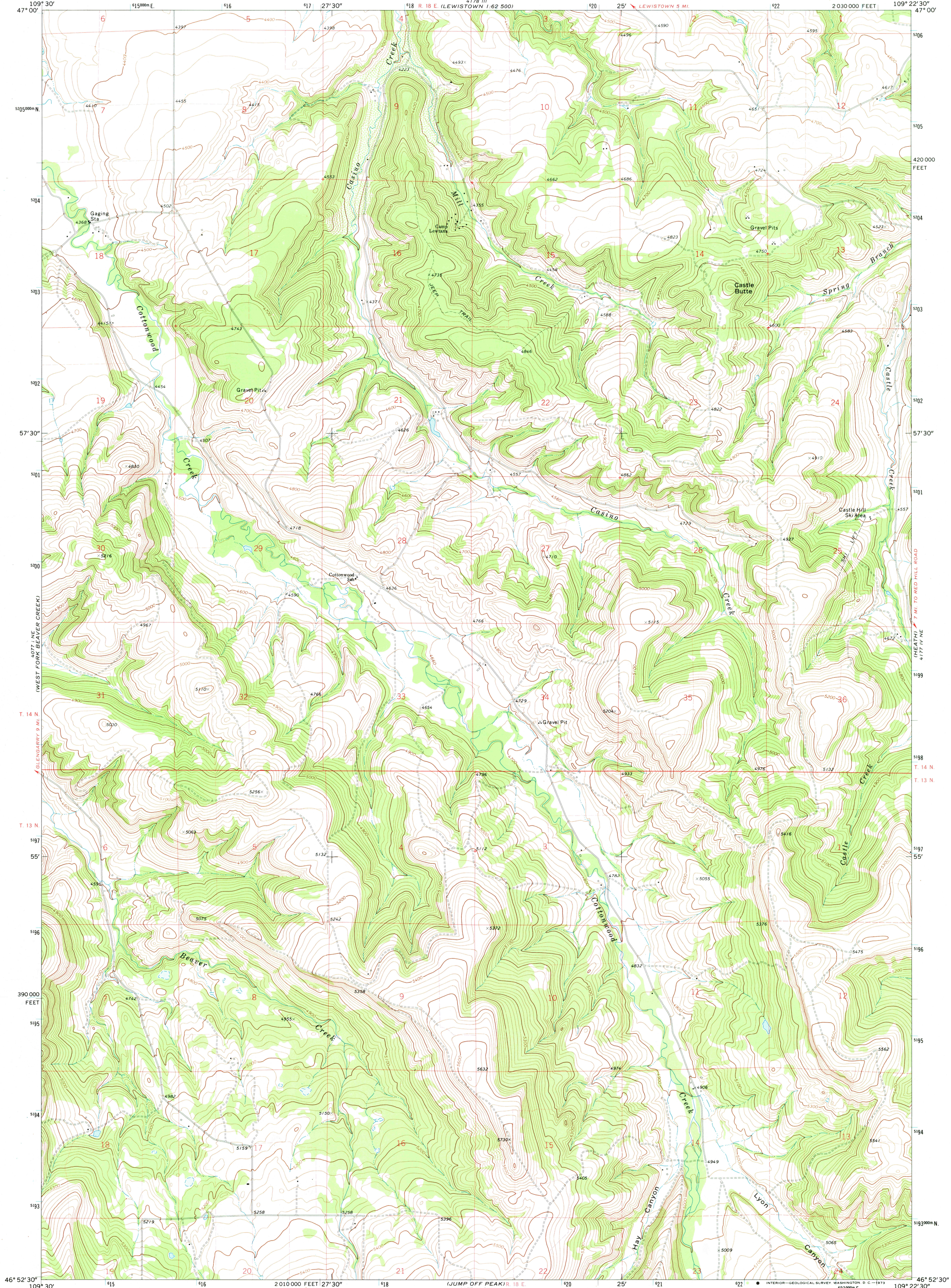
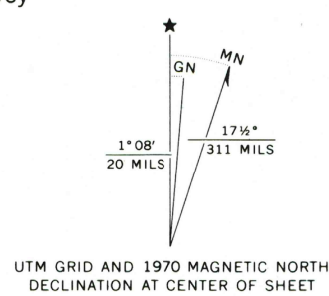


UNITED STATES  
DEPARTMENT OF THE INTERIOR  
GEOLOGICAL SURVEY

CASTLE BUTTE QUADRANGLE  
MONTANA—FERGUS CO.  
7.5 MINUTE SERIES (TOPOGRAPHIC)



Mapped, edited, and published by the Geological Survey  
Control by USGS and USC&GS  
Topography by photogrammetric methods from aerial  
photographs taken 1968. Field checked 1970  
Projection and 10,000-foot grid ticks: Montana coordinate  
system, central zone (Lambert conformal conic)  
1000-meter Universal Transverse Mercator grid ticks,  
zone 12, shown in blue. 1927 North American datum  
Fine red dashed lines indicate selected fence lines



THIS MAP COMPLIES WITH NATIONAL MAP ACCURACY STANDARDS  
FOR SALE BY U. S. GEOLOGICAL SURVEY, DENVER, COLORADO 80225, OR WASHINGTON, D. C. 20242  
A FOLDER DESCRIBING TOPOGRAPHIC MAPS AND SYMBOLS IS AVAILABLE ON REQUEST

ROAD CLASSIFICATION  
Primary highway, hard surface  
Secondary highway, hard surface  
Light-duty road, hard or improved surface  
Unimproved road  
Interstate Route  
U. S. Route  
State Route



U. S. G. S.

CASTLE BUTTE, MONT.  
N4652.5—W10922.5/7.5

1970

TOPOGRAPHIC DIVISION

USGS  
Historical File  
Topographic Division