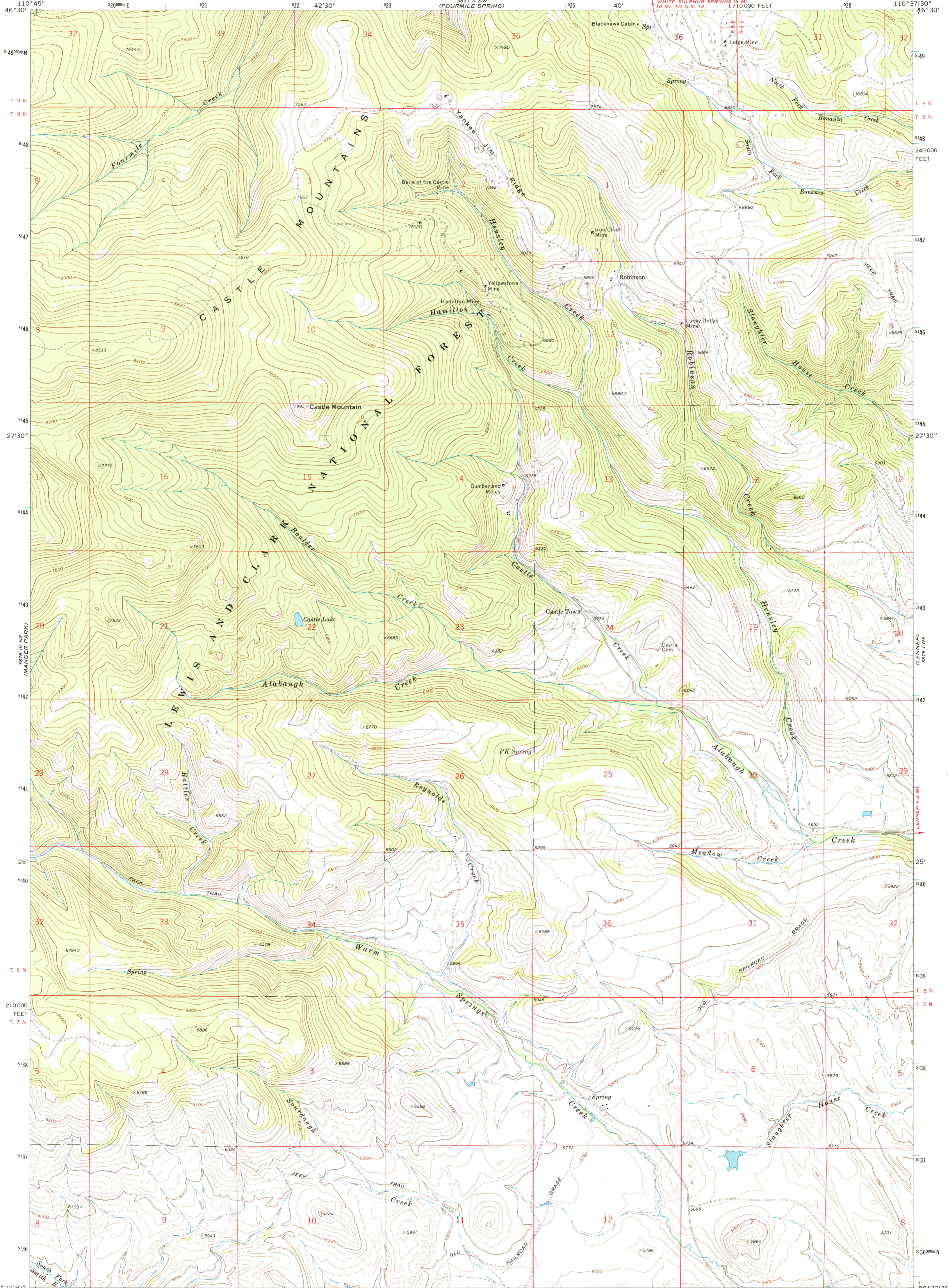
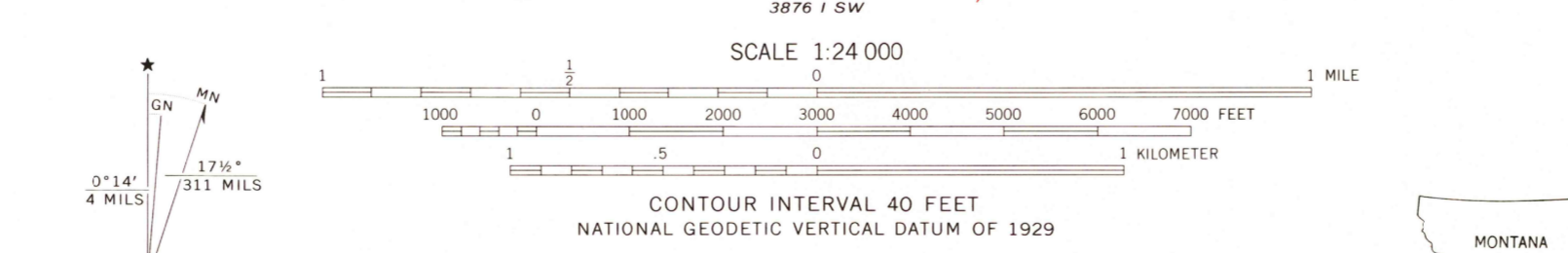


UNITED STATES  
DEPARTMENT OF THE INTERIOR  
GEOLOGICAL SURVEY

CASTLE TOWN QUADRANGLE  
MONTANA—MEAGER CO.  
7.5 MINUTE SERIES (TOPOGRAPHIC)



Mapped, edited, and published by the Geological Survey  
Control by USGS and USC&GS  
Topography by photogrammetric methods from aerial photographs taken 1971. Field checked 1972  
Projection and 10,000-foot grid ticks: Montana coordinate system, central zone (Lambert conformal conic) 1000-meter Universal Transverse Mercator grid ticks, zone 12, shown in blue. 1927 North American Datum  
Fine red dashed lines indicate selected fence lines  
To place on the predicted North American Datum 1983 move the projection lines 9 meters north and 61 meters east as shown by dashed corner ticks  
There may be private inholdings within the boundaries of the National or State reservations shown on this map



ROAD CLASSIFICATION  
Primary highway, hard surface  
Secondary highway, hard surface  
Unimproved road  
Light-duty road, hard or improved surface  
Interstate Route  
U. S. Route  
State Route

THIS MAP COMPLIES WITH NATIONAL MAP ACCURACY STANDARDS  
FOR SALE BY U.S. GEOLOGICAL SURVEY, DENVER, COLORADO 80225, OR RESTON, VIRGINIA 22092  
A FOLDER DESCRIBING TOPOGRAPHIC MAPS AND SYMBOLS IS AVAILABLE ON REQUEST

CASTLE TOWN, MONT.  
46110-06-TF-024

1972  
DMA 3876 1 NW-SERIES V884