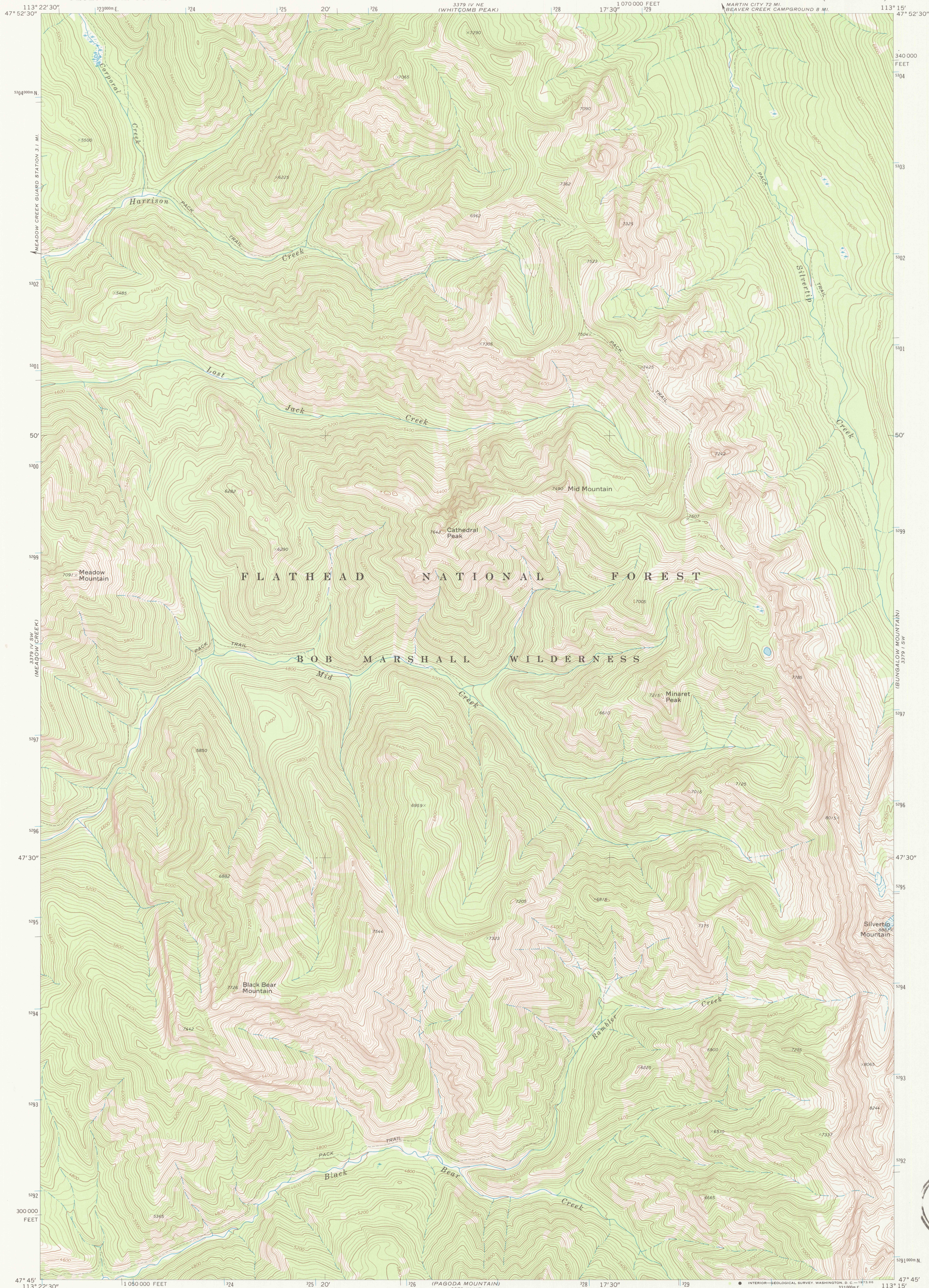


UNITED STATES
DEPARTMENT OF THE INTERIOR
GEOLOGICAL SURVEY

CATHEDRAL PEAK QUADRANGLE
MONTANA—FLATHEAD CO.
7.5 MINUTE SERIES (TOPOGRAPHIC)



Mapped, edited, and published by the Geological Survey

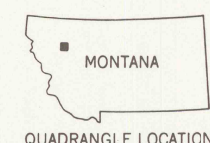
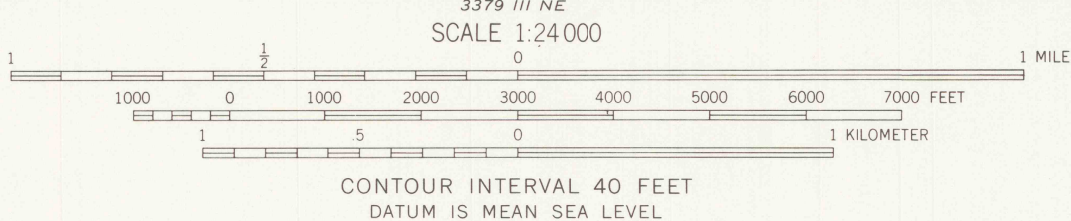
Control by USGS and USC&GS

Topography by photogrammetric methods from aerial
photographs taken 1969. Field checked 1970

Polycyclic projection. 1927 North American datum
10,000-foot grid based on Montana coordinate system,
north zone

1000-meter Universal Transverse Mercator grid ticks,
zone 12, shown in blue

Land lines have not been established in this area



ROAD CLASSIFICATION
Trails.....

CATHEDRAL PEAK, MONT.
N4745—W11315/7.5

1970

AMS 3379 IV SE—SERIES V894

THIS MAP COMPLIES WITH NATIONAL MAP ACCURACY STANDARDS
FOR SALE BY U. S. GEOLOGICAL SURVEY, DENVER, COLORADO 80225, OR WASHINGTON, D. C. 20242
A FOLDER DESCRIBING TOPOGRAPHIC MAPS AND SYMBOLS IS AVAILABLE ON REQUEST

