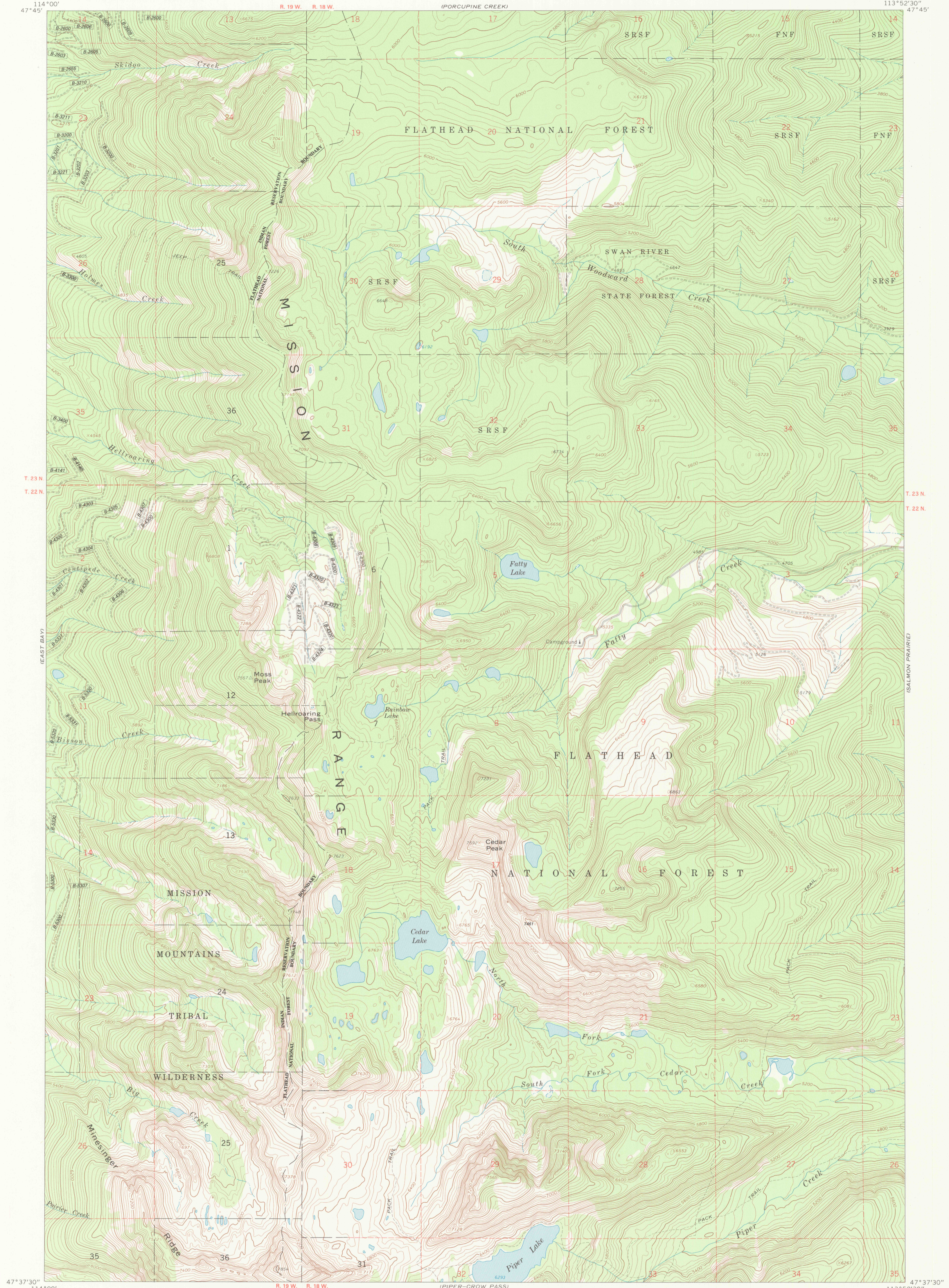


CEDAR LAKE QUADRANGLE
FLATHEAD INDIAN RESERVATION
7.5 MINUTE SERIES (TOPOGRAPHIC)

UNITED STATES
DEPARTMENT OF THE INTERIOR
BUREAU OF INDIAN AFFAIRS



LEGEND

ROADS

- Paved road
- Surface light duty or improved dirt road
- Unimproved dirt road
- Four wheel drive trail
- Route designation shield

RAILROADS

- Single track

LAND LINES

- Surveyed
- Protected
- Fence lines

BOUNDARIES

- County
- Reservation
- Tribal Wilderness
- Tribal Primitive Area
- Power transmission line
- Aerial photo centers 1980 & 1981 flight
- Indicated corner
- Found corner

SCALE 1:24,000

1 0 1000 2000 3000 4000 5000 6000 7000 FEET

1 0 1 2 KILOMETER

CONTOUR INTERVAL 40 FEET
DATUM IS MEAN SEA LEVEL

NATIONAL GEODETIC VERTICAL DATUM OF 1929
CONTROL BY USGS AND NOS/NOAA

Prepared by the Geological Survey for
the Bureau of Indian Affairs, Flathead Agency

Compiled in 1988 from USGS 1:24,000-scale quadrangle dated 1965
Revised from aerial photographs taken 1977 and other source data provided by BIA

1988 MAGNETIC NORTH
DECLINATION AT CENTER OF SHEET IS 18°

RETURN TO:
USGS NMD HISTORICAL MAP ARCHIVES

CEDAR LAKE, MONT.
FLATHEAD INDIAN RESERVATION
LAKE CO.