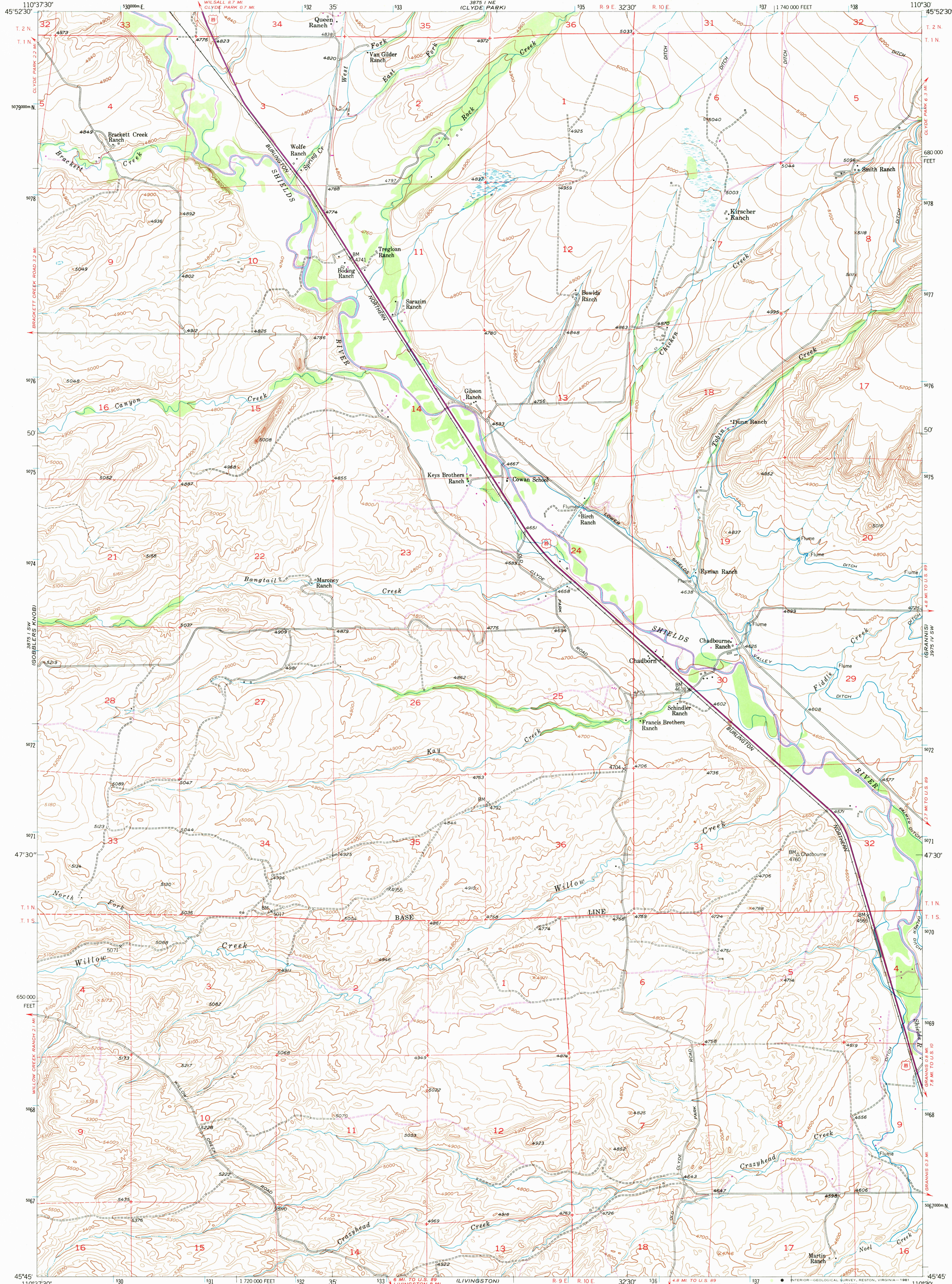
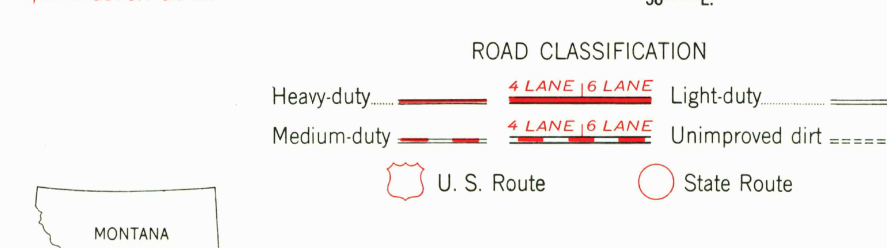
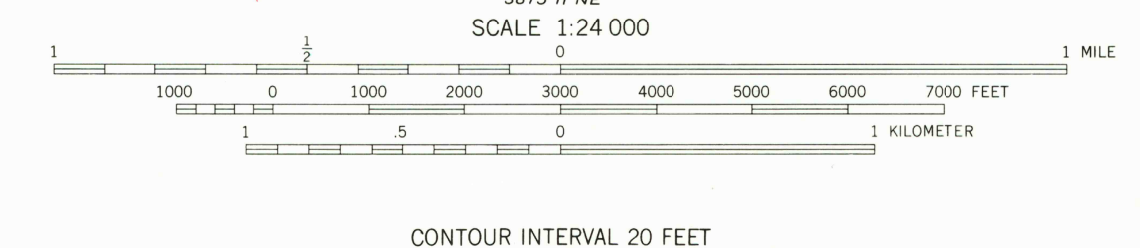
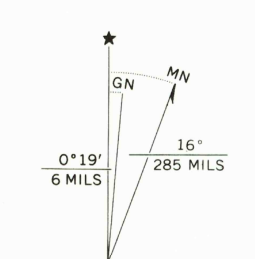


UNITED STATES
DEPARTMENT OF THE INTERIOR
GEOLOGICAL SURVEY

CHADBORN QUADRANGLE
MONTANA-PARK CO.
7.5 MINUTE SERIES (TOPOGRAPHIC)



Maped, edited, and published by the Geological Survey as part of the Department of the Interior program for the development of the Missouri River Basin
Control by USGS and NOS/NOAA
Topography from aerial photographs by multiplex methods
Aerial photographs taken 1948. Field check, 1951
Polyconic projection. 1927 North American datum
10,000-foot grid based on Montana coordinate system, south zone
Dashed land lines indicate approximate locations
Unchecked elevations are shown in brown
To place on the predicted North American Datum 1983
move the projection lines 10 meters north and
60 meters east as shown by dashed corner ticks
1000-meter Universal Transverse Mercator grid ticks,
zone 12, shown in blue



CHADBORN, MONT.
N4545-W1030/7.5
1951
PHOTOREVISED 1990
DMA 3875 1 SE-SERIES V894

USGS
HISTORICAL FILE
JUN 26 1981
1850