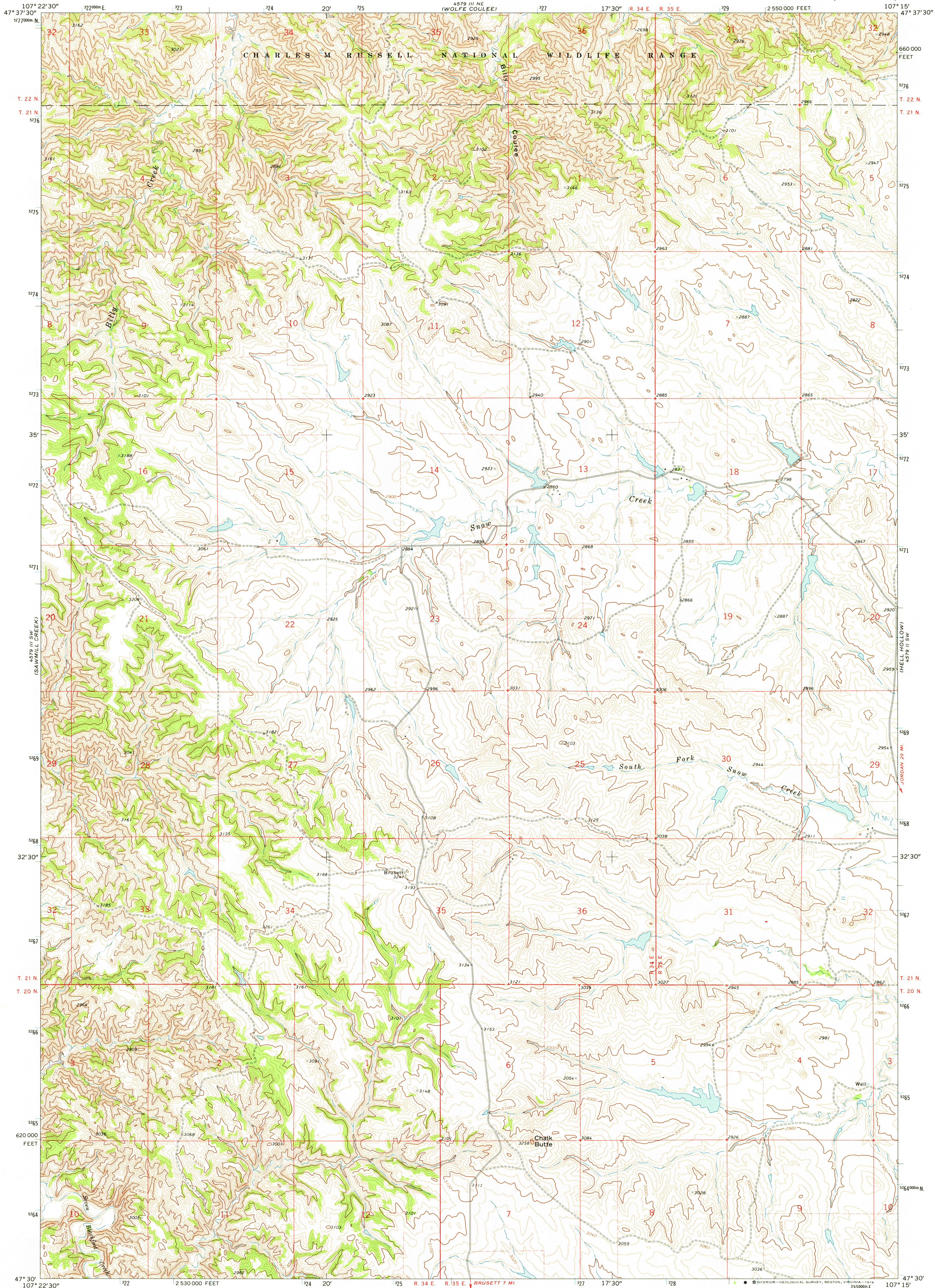


4579 III NW  
(SWEDGE RIDGE)

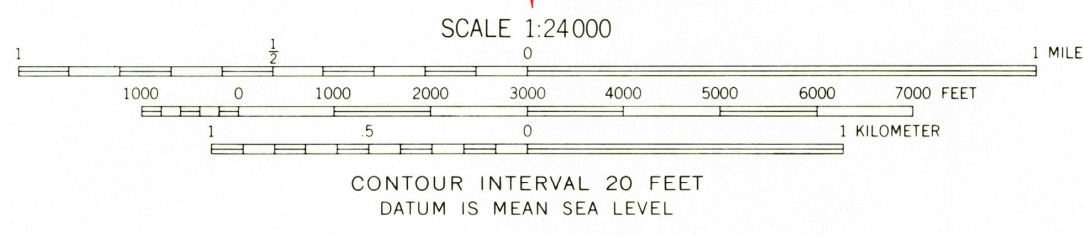
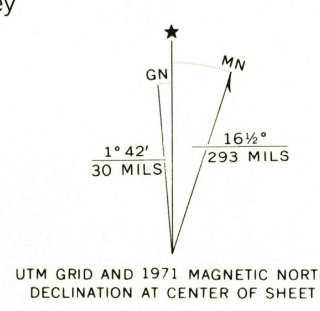
UNITED STATES  
DEPARTMENT OF THE INTERIOR  
GEOLOGICAL SURVEY

CHALK BUTTE QUADRANGLE  
MONTANA—GARFIELD CO.  
7.5 MINUTE SERIES (TOPOGRAPHIC)

4579 III NW  
(WAGON COULEE)



Mapped, edited, and published by the Geological Survey  
Control by USGS and USC&GS  
Topography by photogrammetric methods from aerial  
photographs taken 1970. Field checked 1971  
Projection and 10,000-foot grid ticks: Montana  
coordinate system, central zone (Lambert conformal conic)  
1000-meter Universal Transverse Mercator grid ticks,  
zone 13, shown in blue. 1927 North American datum  
Fine red dashed lines indicate selected fence lines



ROAD CLASSIFICATION

Primary highway, hard surface	Light-duty road, hard or improved surface
Secondary highway, hard surface	Unimproved road
Interstate Route	U. S. Route
	State Route

THIS MAP COMPLIES WITH NATIONAL MAP ACCURACY STANDARDS  
FOR SALE BY U.S. GEOLOGICAL SURVEY, DENVER, COLORADO 80225, OR RESTON, VIRGINIA 22092  
A FOLDER DESCRIBING TOPOGRAPHIC MAPS AND SYMBOLS IS AVAILABLE ON REQUEST

USGS  
HISTORICAL FILE  
TOPOGRAPHIC DIVISION

2950

CHALK BUTTE, MONT.  
N4730—W10715/7.5

1971

AMS 4579 III SE—SERIES V894

001 1 5 1974