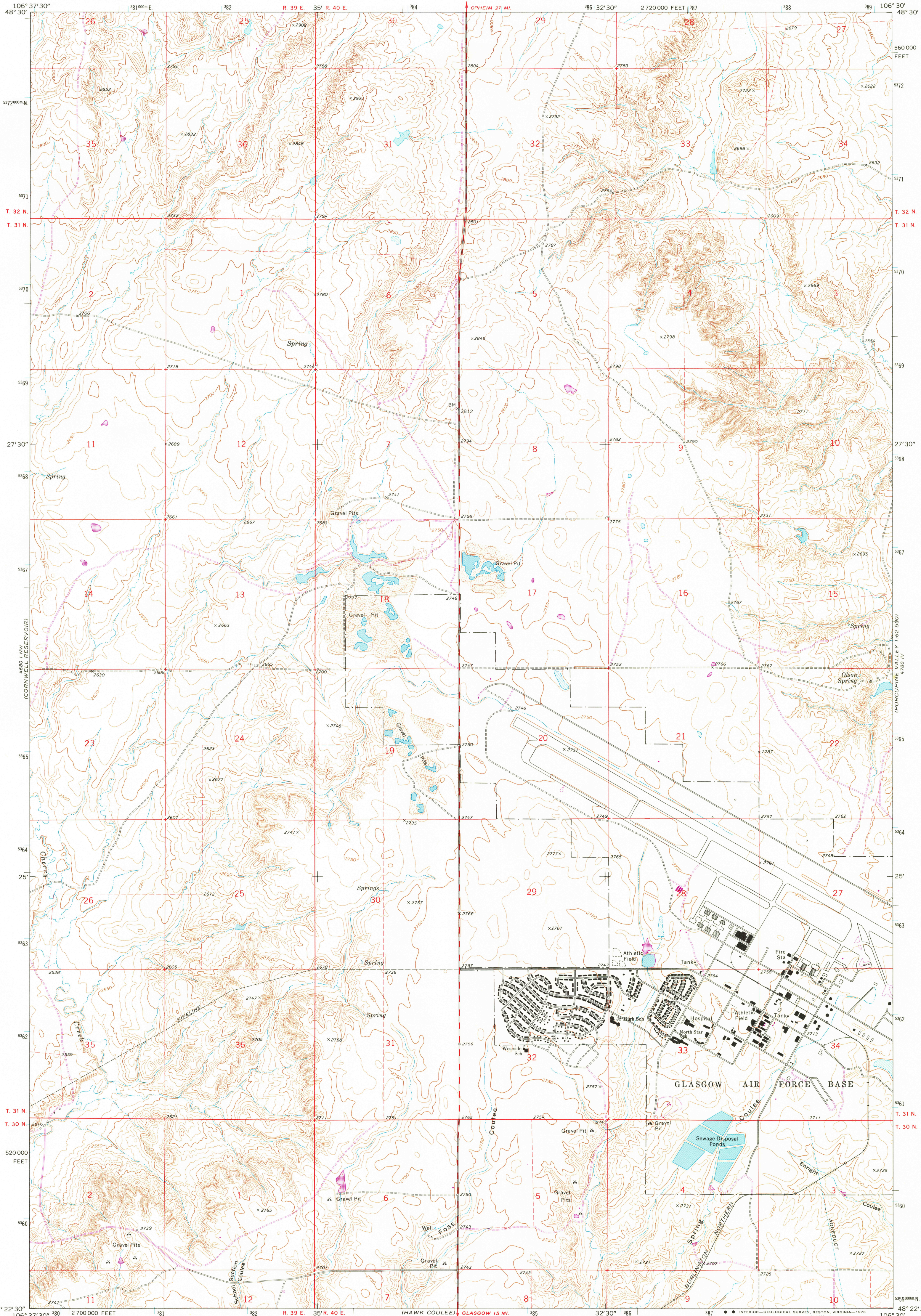


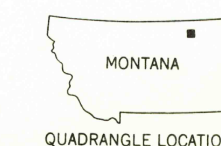
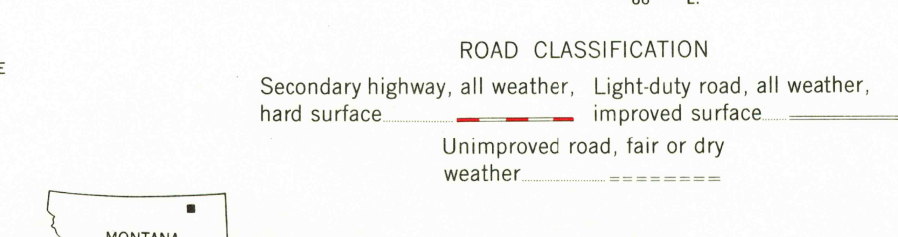
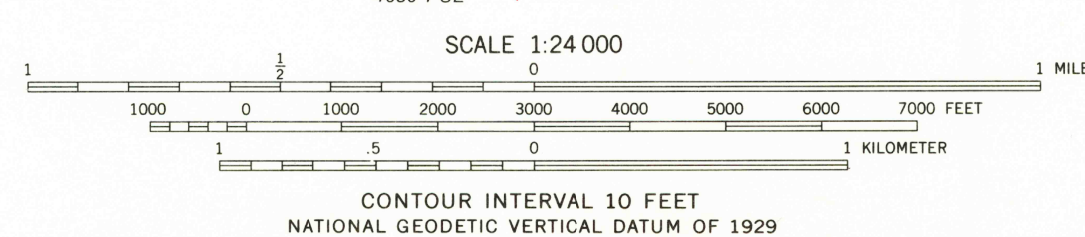
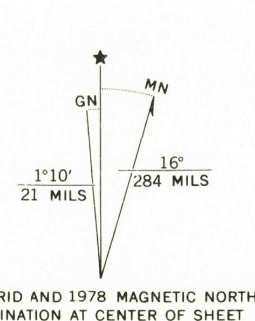
UNITED STATES
DEPARTMENT OF THE INTERIOR
GEOLOGICAL SURVEY

CHAPMAN COULEE NE QUADRANGLE
MONTANA—VALLEY CO.
7.5 MINUTE SERIES (TOPOGRAPHIC)

28° 18' 30" N
(CAMERON POINT)



Mapped, edited, and published by the Geological Survey
as part of the Department of the Interior program
for the development of the Missouri River Basin
Control by USGS and NOS/NOAA
Topography by photogrammetric methods from aerial
photographs taken 1967. Field checked 1969
Polyconic projection. 1927 North American datum
10,000-foot grid based on Montana coordinate system,
north zone
1000-meter Universal Transverse Mercator grid ticks,
zone 13, shown in blue
Fine red dashed lines indicate selected fence lines
Revisions shown in purple compiled from aerial
photographs taken 1976. Map edited 1977
This information not field checked



THIS MAP COMPLIES WITH NATIONAL MAP ACCURACY STANDARDS
FOR SALE BY U. S. GEOLOGICAL SURVEY, DENVER, COLORADO 80225, OR RESTON, VIRGINIA 22092
A FOLDER DESCRIBING TOPOGRAPHIC MAPS AND SYMBOLS IS AVAILABLE ON REQUEST

CHAPMAN COULEE NE, MONT.
N4822.5—W10630/7.5
USGS
Historical File
Topographic Division
1969
PHOTOREVISED 1978
AMS 4680 I NE—SERIES V894

MAR 17 1978

2,800