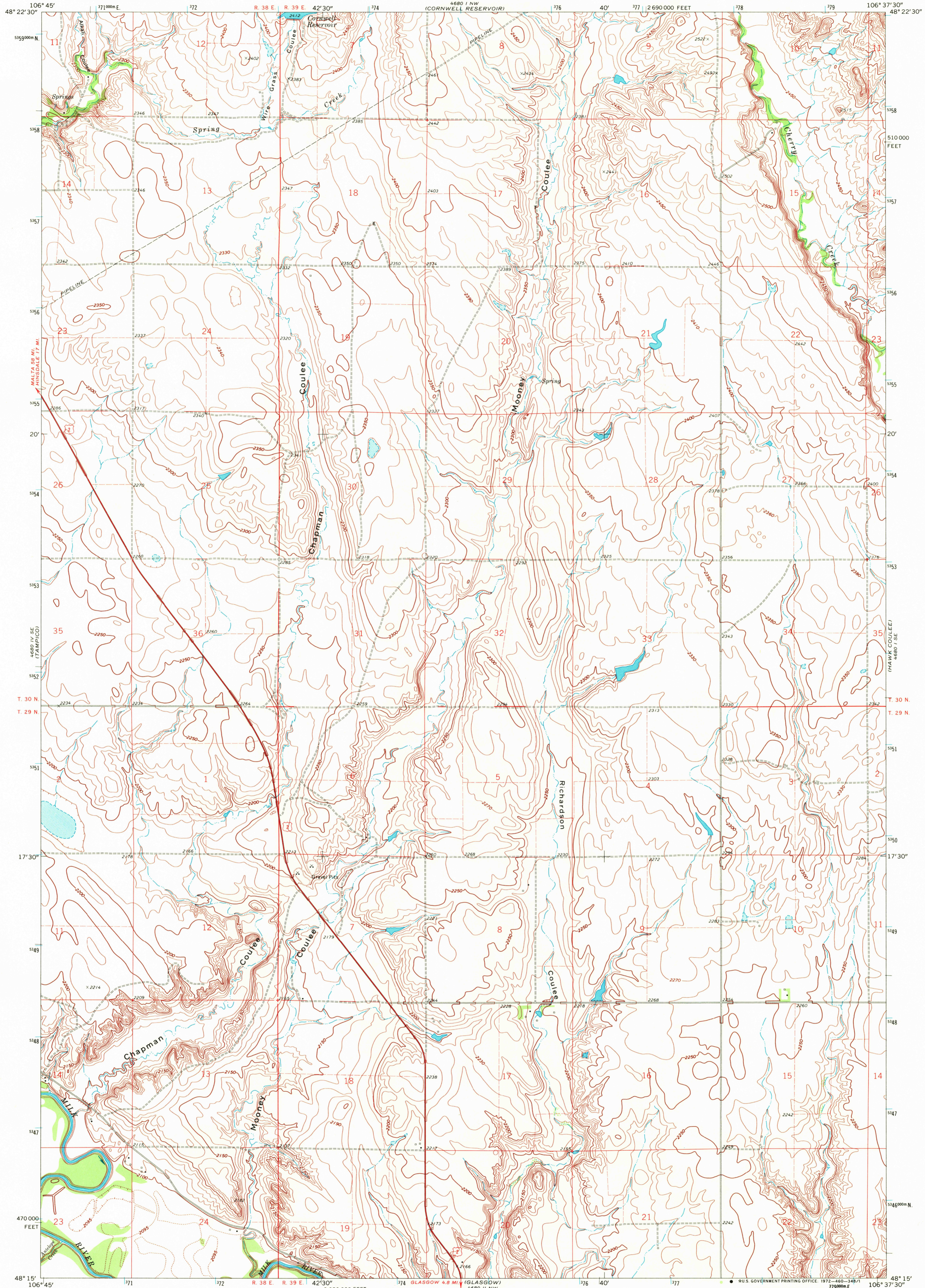
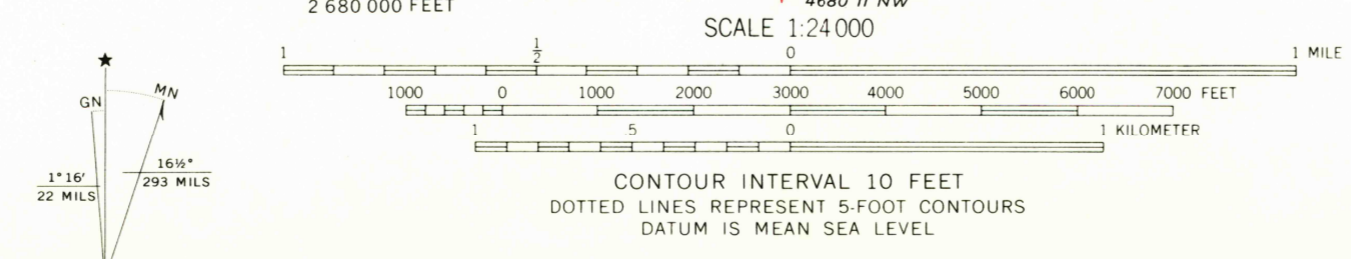


UNITED STATES
DEPARTMENT OF THE INTERIOR
GEOLOGICAL SURVEY

CHAPMAN COULEE QUADRANGLE
MONTANA—VALLEY CO.
7.5 MINUTE SERIES (TOPOGRAPHIC)



Mapped, edited, and published by the Geological Survey as part of the Department of the Interior program for the development of the Missouri River Basin Control by USGS and USC&GS
Topography by photogrammetric methods from aerial photographs taken 1967. Field checked 1969
Polyconic projection. 1927 North American datum 10,000-foot grid based on Montana coordinate system, north zone
1000-meter Transverse Mercator grid ticks, zone 13, shown in blue
Fine red dashed lines indicate selected fence lines



ROAD CLASSIFICATION
Primary highway, all weather, hard surface
Light-duty road, all weather, improved surface
Unimproved road, fair or dry weather
U. S. Route



CHAPMAN COULEE, MONT.
N4815—W10637.5/7.5

1969

AMS 4680 I SW—SERIES V884

USGS HISTORICAL FILE TOPOGRAPHIC DIVISION

DEC 20 1972

USGS HISTORICAL FILE TOPOGRAPHIC DIVISION

R.H.D. 2000