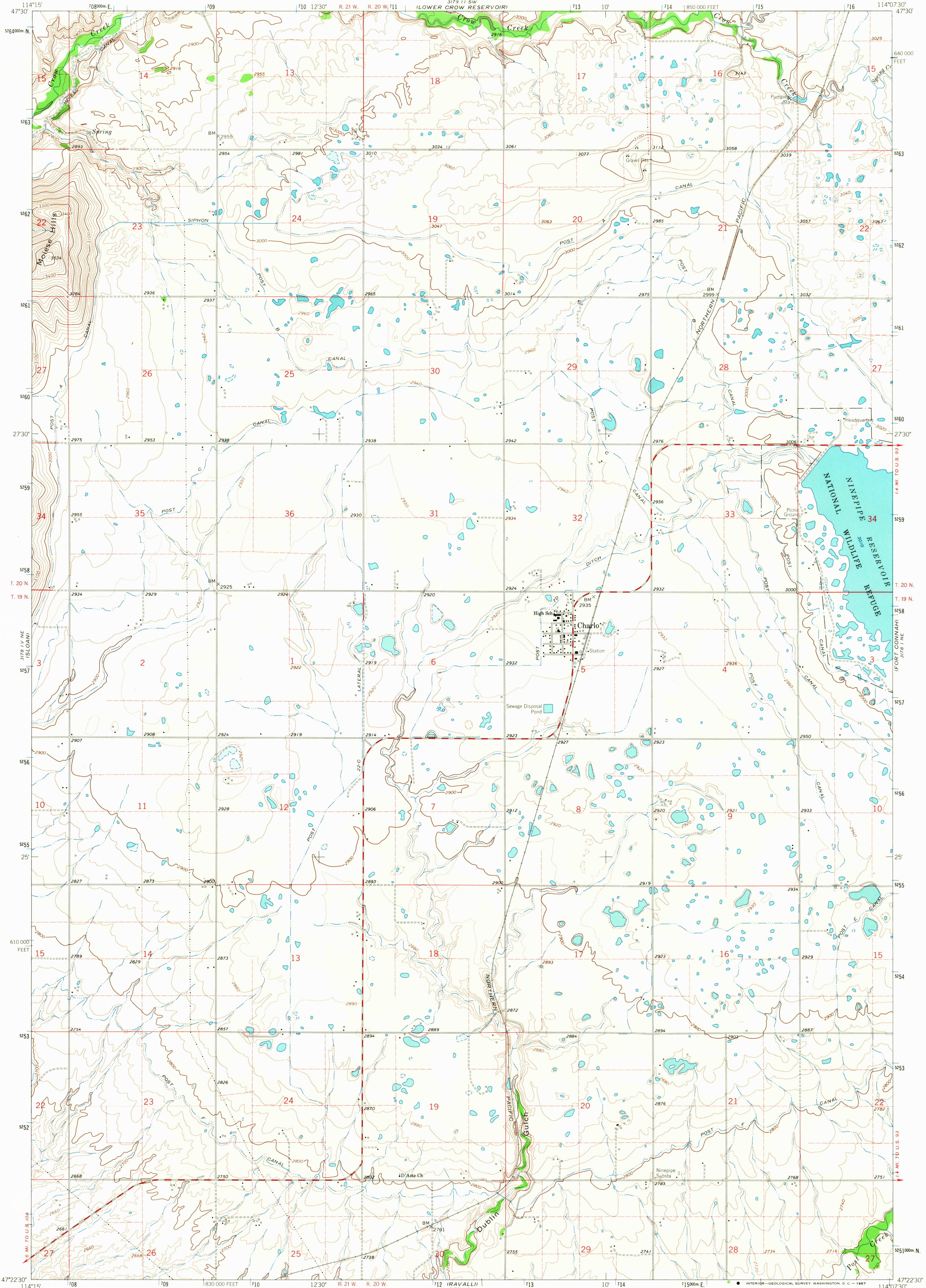


UNITED STATES
DEPARTMENT OF THE INTERIOR
GEOLOGICAL SURVEY

CHARLO QUADRANGLE
MONTANA-LAKE CO.
7.5 MINUTE SERIES (TOPOGRAPHIC)



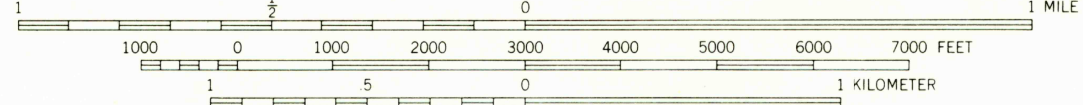
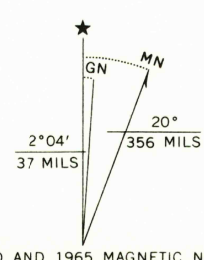
Mapped, edited, and published by the Geological Survey

Control by USGS and USC&GS

Topography by photogrammetric methods from aerial photographs taken 1958. Field checked 1965

Polycyclic projection: 1927 North American datum, 10,000-foot grid based on Montana coordinate system, central zone 1000-meter Universal Transverse Mercator grid ticks, zone 11, shown in blue

Fine red dashed lines indicate selected fence lines



CONTOUR INTERVAL 20 FEET

DOTTED LINES REPRESENT 10 FOOT CONTOURS

DATUM IS MEAN SEA LEVEL

ROAD CLASSIFICATION
Medium-duty ——— Light-duty ———
Unimproved dirt ———



U.S.G.S.

CHARLO, MONT.
N4722.5-W11407.5/7.5

1965

TOPOGRAPHIC DIVISION

AMS 3178 I NW-SERIES V894

USGS
Historical File
Topographic Division

2750
MAR 28 1967