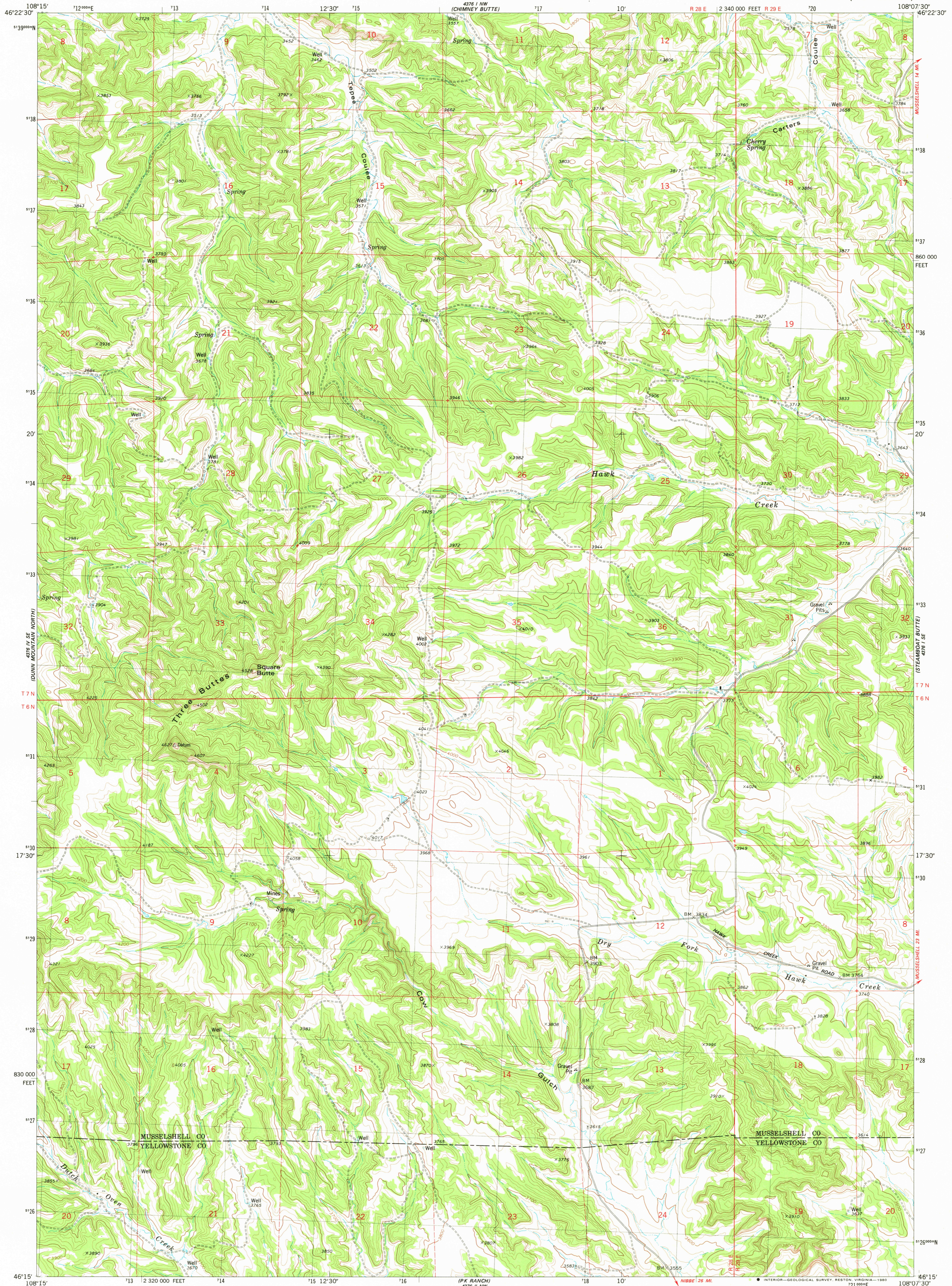
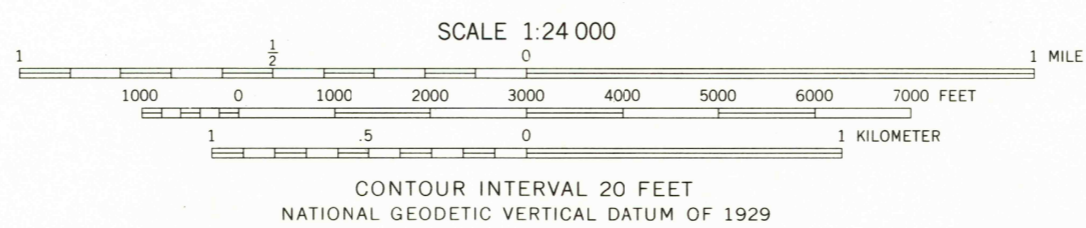
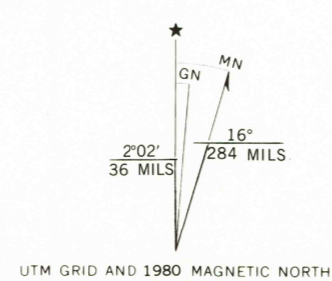


UNITED STATES
DEPARTMENT OF THE INTERIOR
GEOLOGICAL SURVEY

CHERRY SPRING QUADRANGLE
MONTANA
7.5 MINUTE SERIES (TOPOGRAPHIC)



Mapped, edited, and published by the Geological Survey
Control by USGS and NOS/NOAA
Topography by photogrammetric methods from aerial photographs taken 1973. Field checked 1974. Map edited 1980
Projection and 10,000-foot grid: Montana coordinate system, south zone (Lambert conformal conic) 1000-meter Universal Transverse Mercator grid, zone 12 1927 North American datum
To place on the predicted North American Datum 1983 move the projection lines 7 meters north and 53 meters east as shown by dashed corner ticks
Fine red dashed lines indicate selected fence lines



ROAD CLASSIFICATION

Primary highway, hard surface	Light-duty road, hard or improved surface
Secondary highway, hard surface	Unimproved road
Interstate Route	U. S. Route
	State Route

USGS
Historical File
Topographic Division

CHERRY SPRING, MONT.
N4615-W10807.5/7.5
1980

DMA 4376 1 SW-SERIES V894

SEP 26 1980
1750