

Mapped, edited, and published by the Geological Survey

Control by USGS and USC&GS

Topography by photogrammetric methods from aerial

photographs taken 1964. Field checked 1965

Polyconic projection. 1927 North American datum

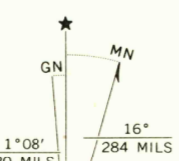
10,000-foot grid based on Montana coordinate system,

central zone

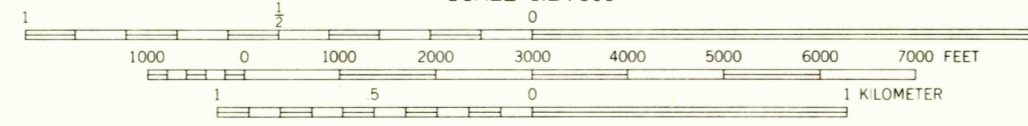
1000-meter Universal Transverse Mercator grid ticks,

zone 13, shown in blue

Fine red dashed lines indicate selected fence lines



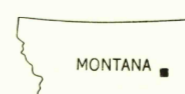
UTM GRID AND 1965 MAGNETIC NORTH  
DECLINATION AT CENTER OF SHEET



SCALE 1:24,000

CONTOUR INTERVAL 20 FEET

DATUM IS MEAN SEA LEVEL



QUADRANGLE LOCATION

ROAD CLASSIFICATION

Medium-duty — Unimproved dirt

State Route

USGS  
Historical File  
Topographic Division

CHRISTENSON RESERVOIR, MONT.  
N4652.5—W10630.7/5

1965

AMS 4671 1E—SERIES V894

U.S.G.S.  
FILE COPY  
TOPOGRAPHIC DIVISION

2630

NOV 7 1969