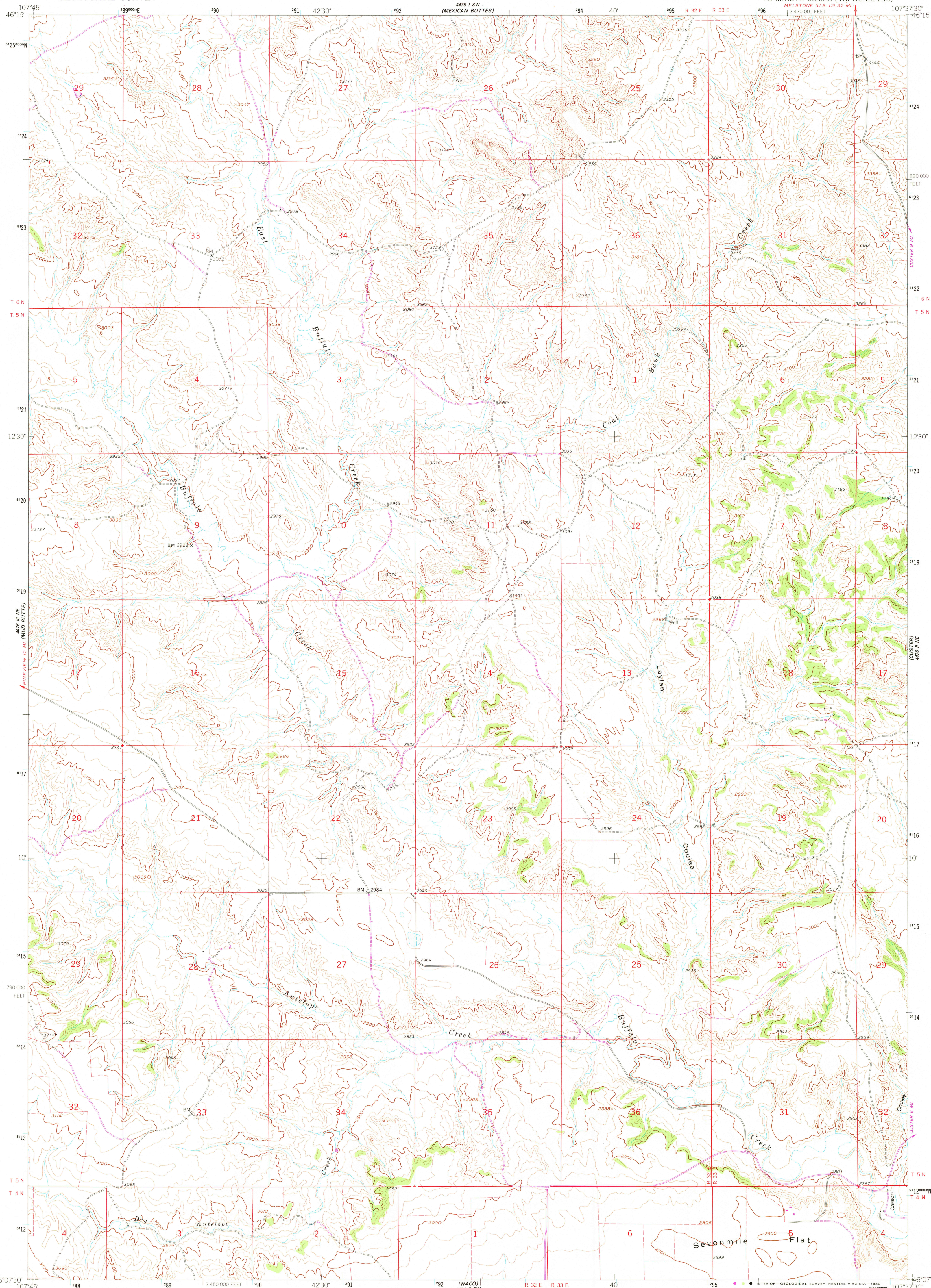


UNITED STATES
DEPARTMENT OF THE INTERIOR
GEOLOGICAL SURVEY

COAL BANK CREEK QUADRANGLE
MONTANA-YELLOWSTONE CO.
7.5 MINUTE SERIES (TOPOGRAPHIC)



Mapped, edited, and published by the Geological Survey as part of the Department of the Interior program for the development of the Missouri River Basin Control by USGS and USC&GS

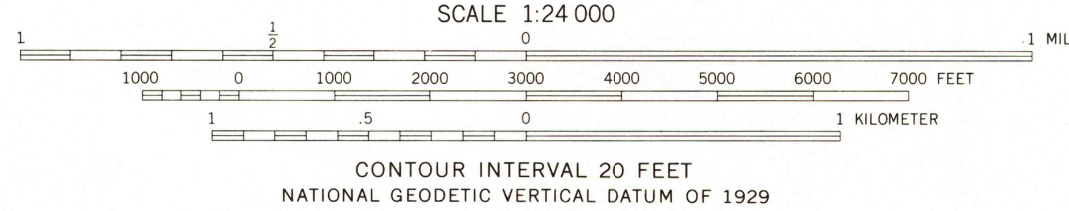
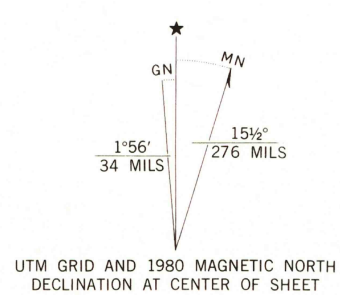
Topography by photogrammetric methods from aerial photographs taken 1956. Field checked 1960

Polyconic projection. 1927 North American datum 10,000-foot grid based on Montana coordinate system.

South zone 1000-meter Universal Transverse Mercator grid ticks, zone 13, shown in blue

To place on the predicted North American Datum 1983 move the projection lines 7 meters north and 51 meters east as shown by dashed corner ticks

Revisions shown in purple compiled from aerial photographs taken 1978. Map edited 1980. This information not field checked



ROAD CLASSIFICATION
Light-duty Unimproved dirt =====

COAL BANK CREEK, MONT.
N4607.5-W10737.5/7.5

1980
PHOTOREVISED 1980
DMA 4476 II NW-SERIES V894

USGS
Historical File
Topographic Division

DEC 12 1980

2050