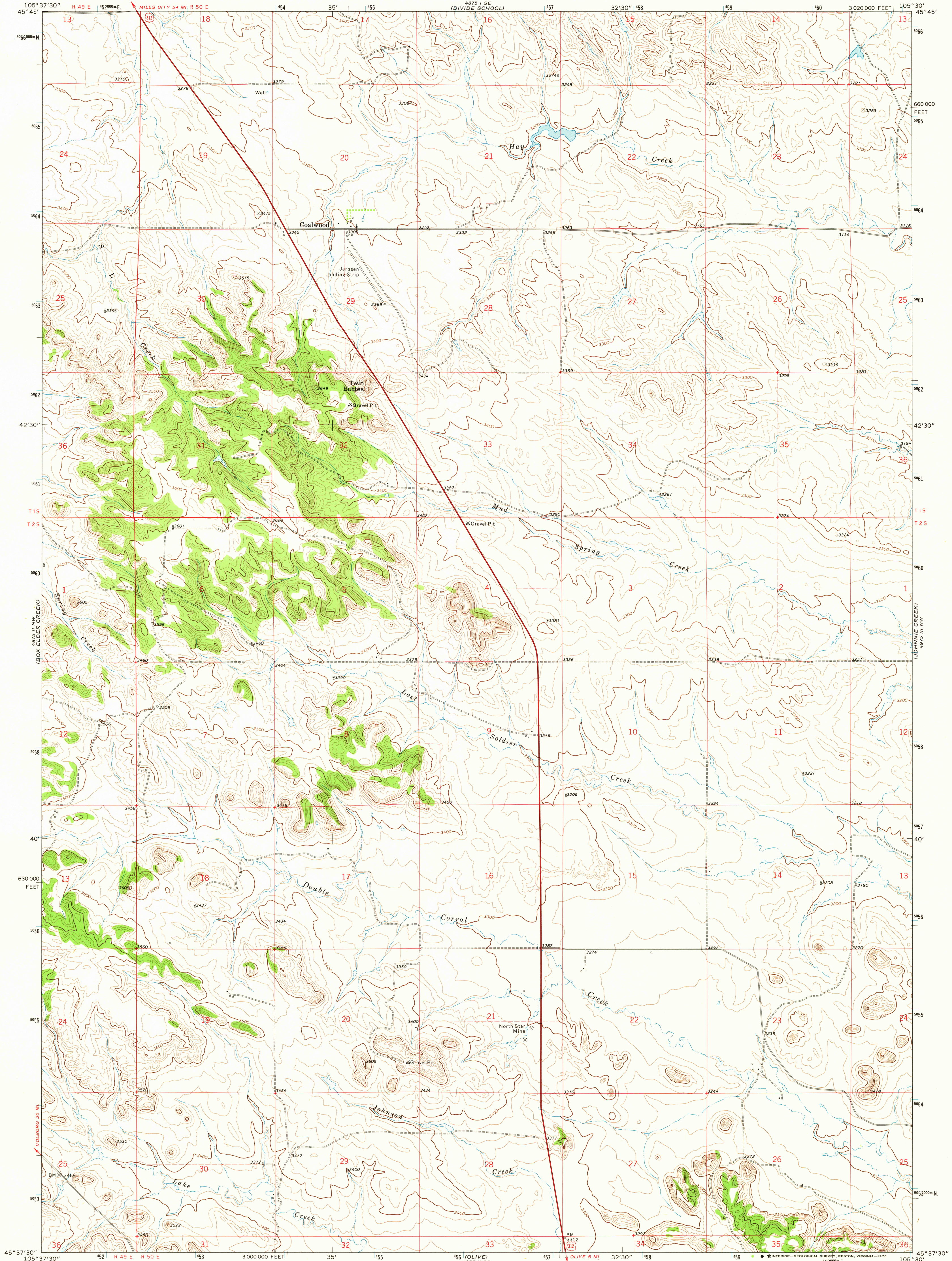
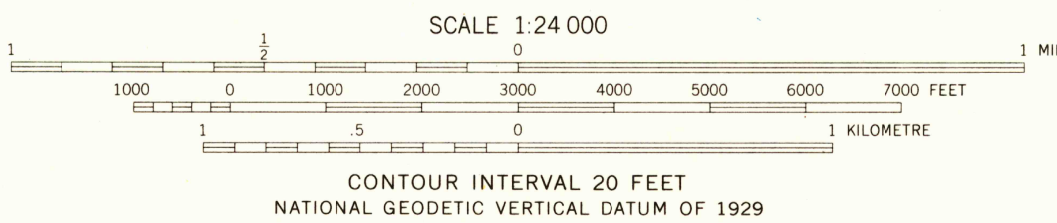
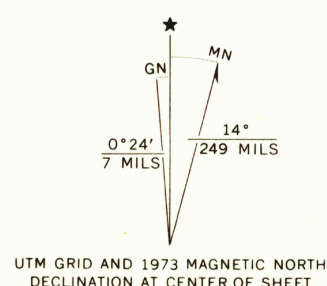


UNITED STATES  
DEPARTMENT OF THE INTERIOR  
GEOLOGICAL SURVEY

COALWOOD QUADRANGLE  
MONTANA—POWDER RIVER CO.  
7.5 MINUTE SERIES (TOPOGRAPHIC)



Mapped, edited, and published by the Geological Survey  
Control by USGS and NOS/NOAA  
Topography by photogrammetric methods from aerial  
photographs taken 1972. Field checked 1973  
Projection and 10,000-foot grid ticks: Montana  
coordinate system, south zone (Lambert conformal conic)  
1000-metre Universal Transverse Mercator grid ticks,  
zone 13, shown in blue. 1927 North American datum  
Fine red dashed lines indicate selected fence lines



ROAD CLASSIFICATION	
Primary highway, hard surface	Light-duty road, hard or improved surface
Secondary highway, hard surface	Unimproved road
Interstate Route	U. S. Route
	State Route

USGS  
Historical File  
Topographic Division

COALWOOD, MONT.  
N4537.5-W10530.7.5  
1973

AMS 4875 II NE—SERIES V894

SEP 16 1976