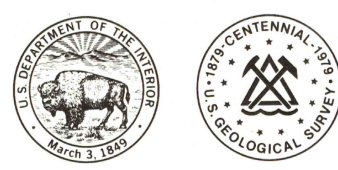
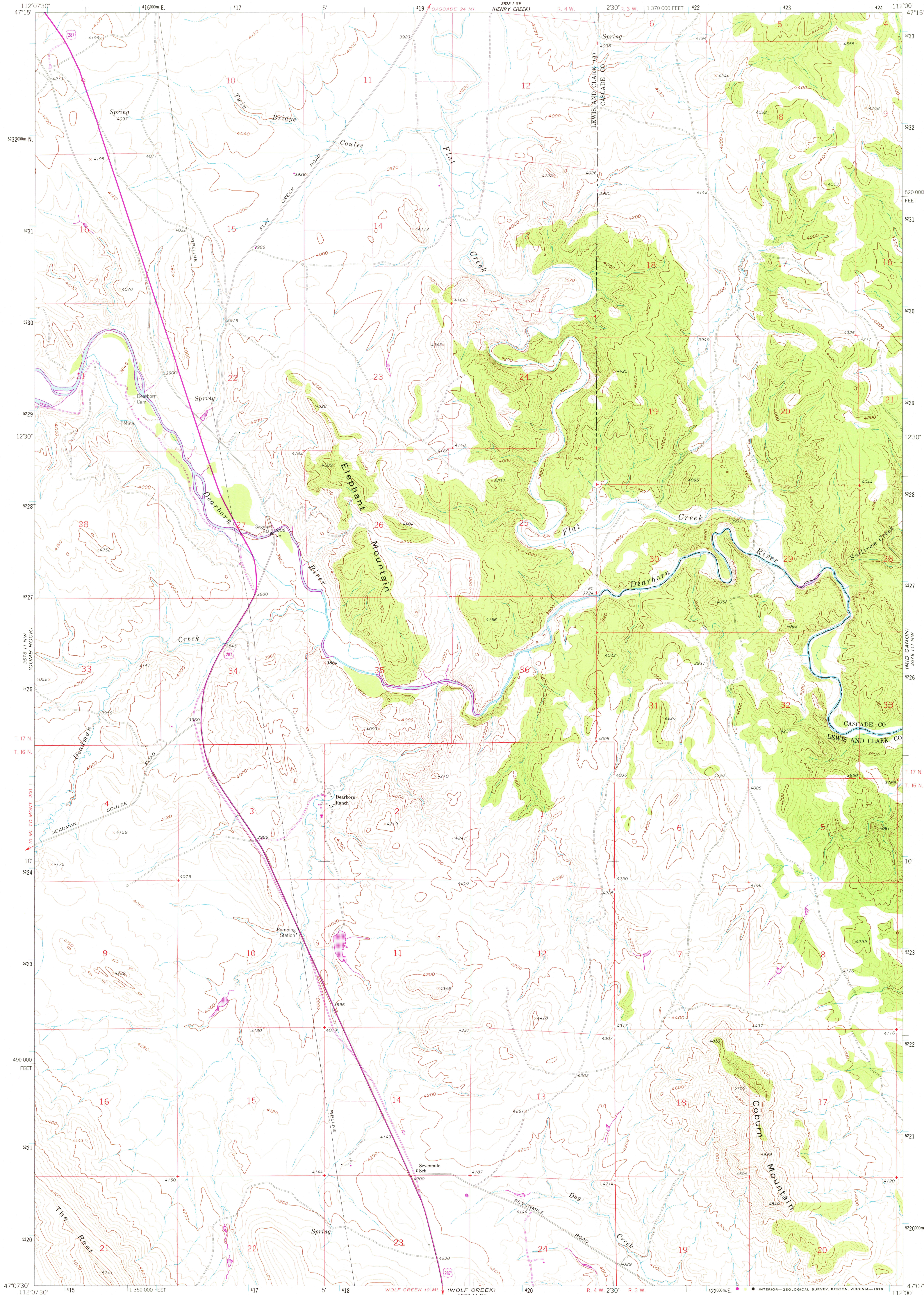


UNITED STATES  
DEPARTMENT OF THE INTERIOR  
GEOLOGICAL SURVEY



COBURN MOUNTAIN QUADRANGLE  
MONTANA  
7.5 MINUTE SERIES (TOPOGRAPHIC)



Mapped, edited, and published by the Geological Survey

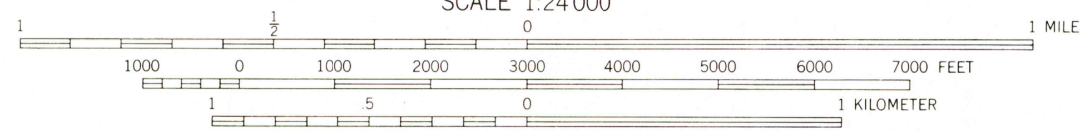
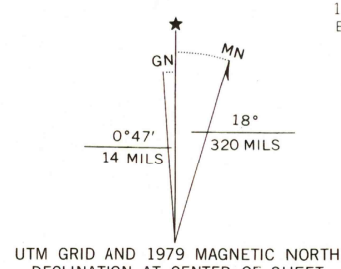
Control by USGS and USCGS

Topography by photogrammetric methods from aerial  
photographs taken 1956. Field checked 1961

Polycyclic projection. 1927 North American datum  
10,000-foot grid based on Montana coordinate system, central zone  
1000-meter Universal Transverse Mercator grid ticks,  
zone 12, shown in blue

Fine red dashed lines indicate selected fence lines

Revisions shown in purple and woodland compiled from  
aerial photographs taken 1976 and other source data  
This information not field checked. Map edited 1979



CONTOUR INTERVAL 40 FEET  
DOTTED LINES REPRESENT 20-FOOT CONTOURS  
NATIONAL GEODETIC VERTICAL DATUM OF 1929

THIS MAP COMPLIES WITH NATIONAL MAP ACCURACY STANDARDS  
FOR SALE BY U. S. GEOLOGICAL SURVEY, DENVER, COLORADO 80225, OR RESTON, VIRGINIA 22092  
A FOLDER DESCRIBING TOPOGRAPHIC MAPS AND SYMBOLS IS AVAILABLE ON REQUEST

ROAD CLASSIFICATION  
Primary highway, all weather, Light-duty road, all weather,  
hard surface improved surface  
Secondary highway, all weather, Unimproved road, fair or dry  
hard surface weather  
Interstate Route U. S. Route State Route



QUADRANGLE LOCATION

USGS  
Historical File  
Topographic Division

COBURN MOUNTAIN, MONT.  
N4707.5-W11200.7/5

1961  
PHOTOREVISED 1979  
AMS 3578 11 NE-SERIES V894

FEB 13 1980