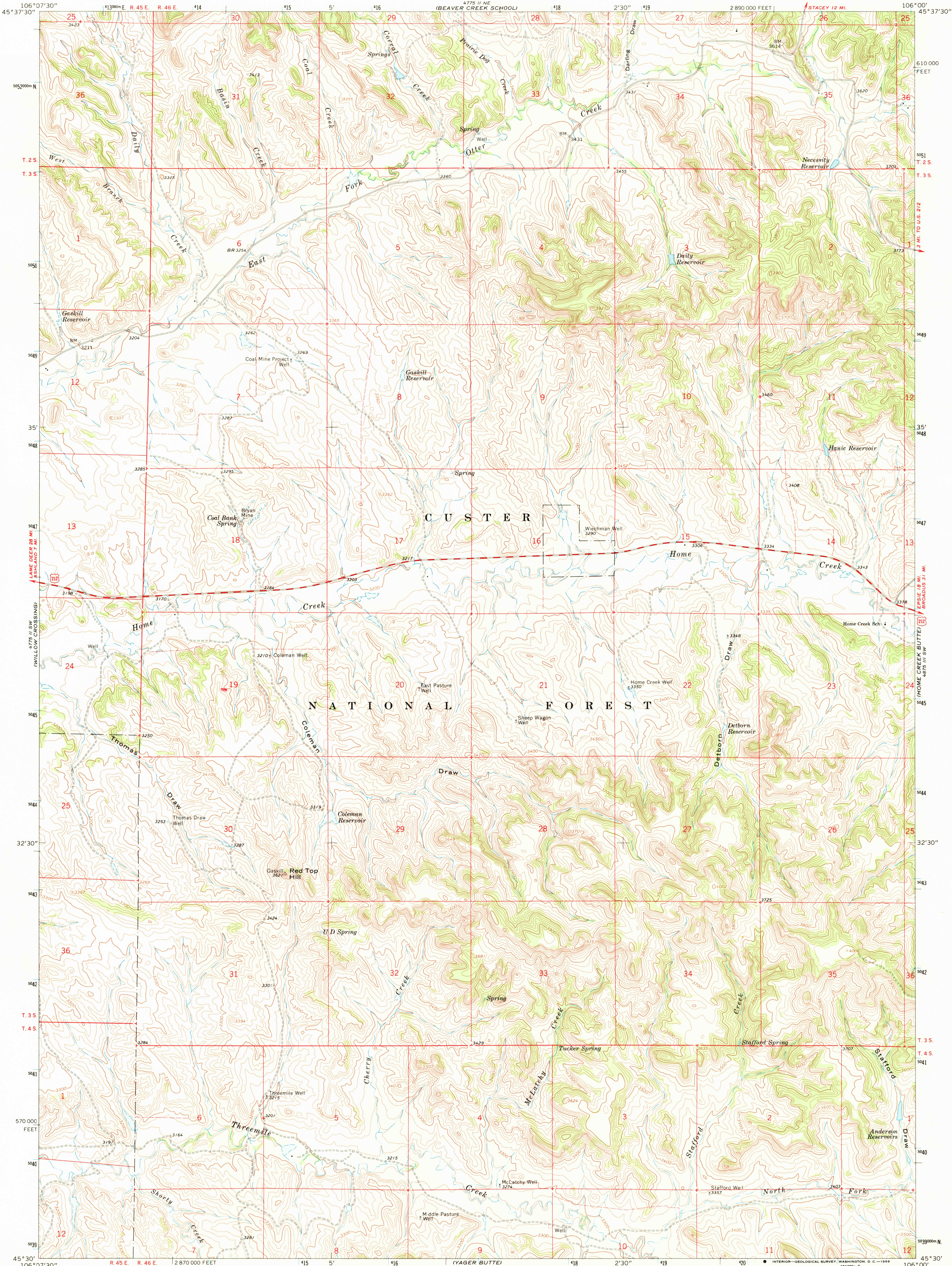


4775 II SW
(WILLOW CROSSING)

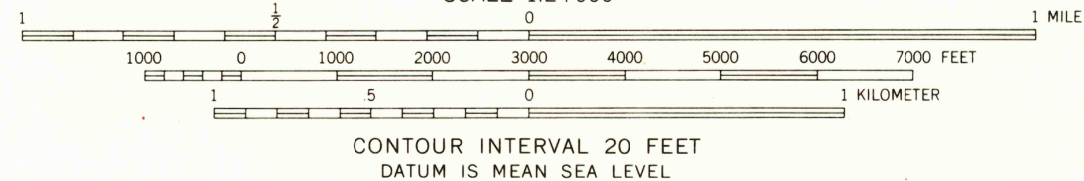
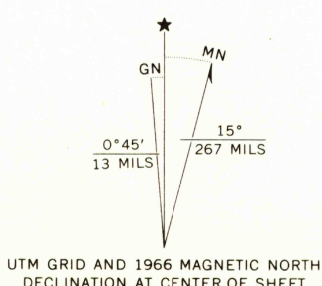
4775 II NE
(BEAVER CREEK SCHOOL)



Maped, edited, and published by the Geological Survey

Control by USGS, USC&GS, and U. S. Forest Service
Topography by photogrammetric methods from aerial
photographs taken 1962. Field checked 1966

Polyconic projection. 1927 North American datum
10,000-foot grid based on Montana coordinate system,
south zone
1000-meter Universal Transverse Mercator grid ticks,
zone 13, shown in blue
Fine red dashed lines indicate selected fence lines



ROAD CLASSIFICATION

Medium-duty	Light-duty
Unimproved dirt	U. S. Route

U.S.G.S.
TOPOGRAPHIC DIVISION

COLEMAN DRAW, MONT.
N4530—W10600/7.5
1966

AMS 4775 II SE—SERIES V894

THIS MAP COMPLIES WITH NATIONAL MAP ACCURACY STANDARDS
FOR SALE BY U. S. GEOLOGICAL SURVEY, DENVER, COLORADO 80225, OR WASHINGTON, D. C. 20242
A FOLDER DESCRIBING TOPOGRAPHIC MAPS AND SYMBOLS IS AVAILABLE ON REQUEST

USGS
Historical File
Topographic Division

2380
NOV 12 1968