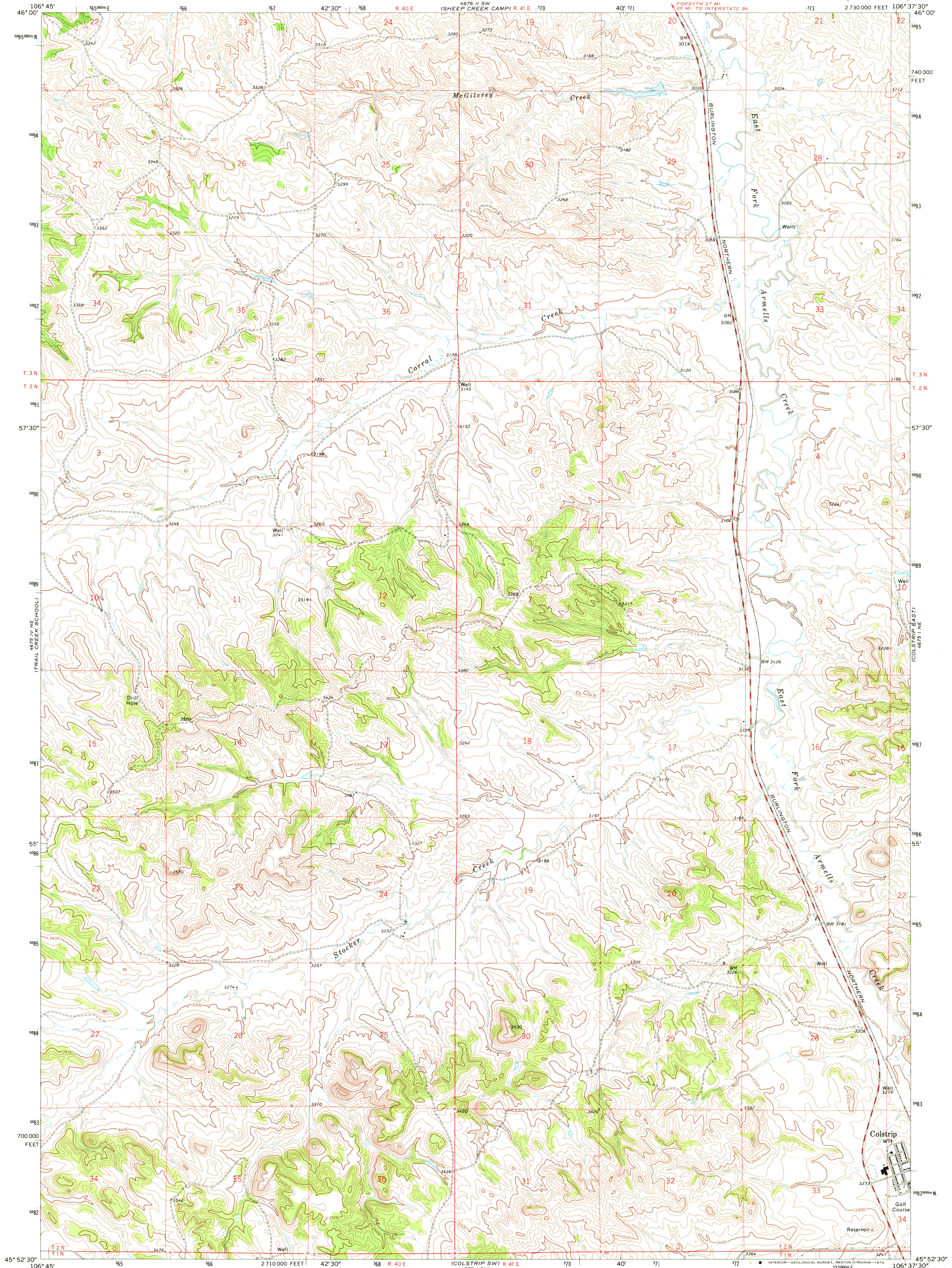
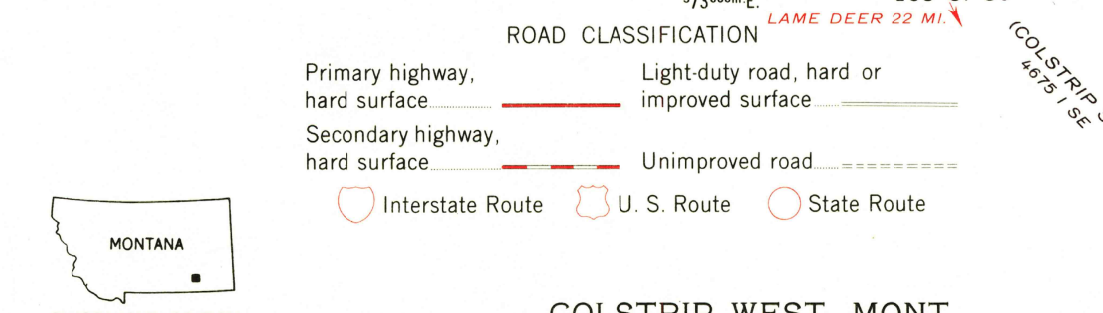
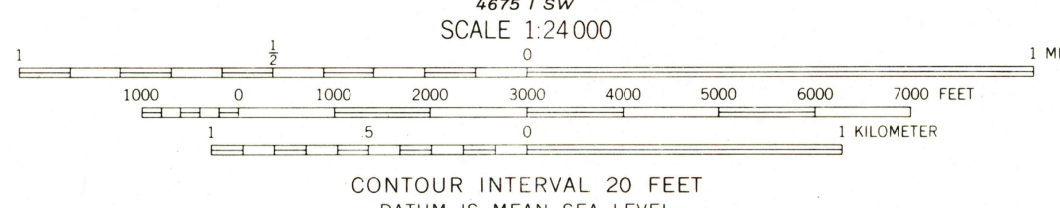
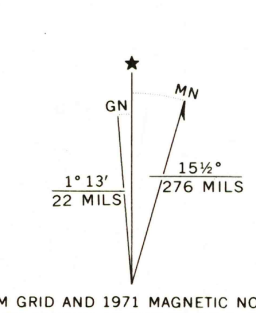


UNITED STATES
DEPARTMENT OF THE INTERIOR
GEOLOGICAL SURVEY

COLSTRIP WEST QUADRANGLE
MONTANA—ROSEBUD CO.
7.5 MINUTE SERIES (TOPOGRAPHIC)



Maped, edited, and published by the Geological Survey
Control by USGS and USC&GS
Topography by photogrammetric methods from aerial
photographs taken 1970. Field checked 1971
Projection and 10,000-foot grid ticks: Montana
coordinate system, south zone (Lambert conformal conic)
1000-meter Universal Transverse Mercator grid ticks,
zone 13, shown in blue. 1927 North American datum
Fine red dashed lines indicate selected fence lines



THIS MAP COMPLIES WITH NATIONAL MAP ACCURACY STANDARDS
FOR SALE BY U. S. GEOLOGICAL SURVEY, DENVER, COLORADO 80225, OR RESTON, VIRGINIA 22092
A FOLDER DESCRIBING TOPOGRAPHIC MAPS AND SYMBOLS IS AVAILABLE ON REQUEST

COLSTRIP WEST, MONT.
N4552.5-W10637.5/7.5
1971
AMS 4675 1 NW—SERIES V894

JUN 25 1974

2430