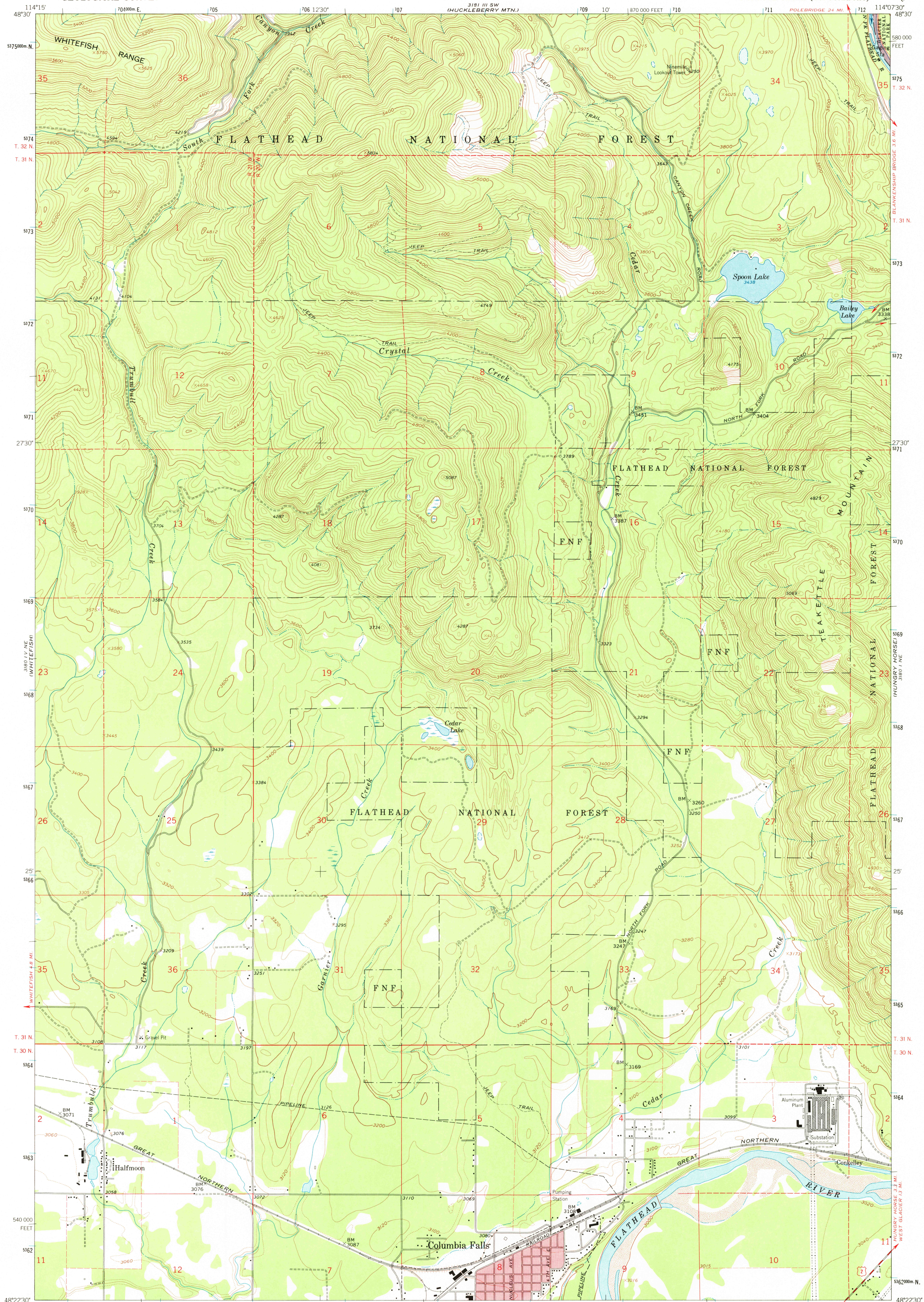


UNITED STATES
DEPARTMENT OF THE INTERIOR
GEOLOGICAL SURVEY

COLUMBIA FALLS NORTH QUADRANGLE
MONTANA-FLATHEAD CO.
7.5 MINUTE SERIES (TOPOGRAPHIC)



Mapped, edited, and published by the Geological Survey

Control by USGS and USC&GS

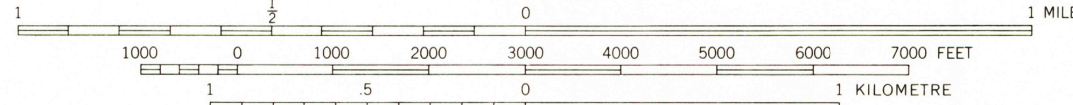
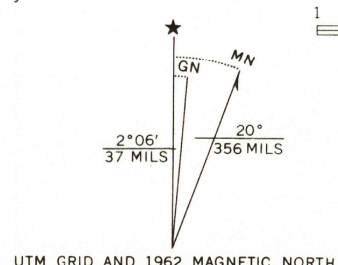
Topography by photogrammetric methods from aerial
photographs taken 1956. Field checked 1962

Polyconic projection. 1927 North American datum.
10,000-foot grid based on Montana coordinate system, north zone
1000-metre Universal Transverse Mercator grid ticks,
zone 11, shown in blue

Red tint indicates area in which only landmark buildings are shown

Fine red dashed lines indicate selected fence lines

Where omitted, land lines have not been established



CONTOUR INTERVAL 40 FEET
DOTTED LINES REPRESENT 20-FOOT CONTOURS
NATIONAL GEODETIC VERTICAL DATUM OF 1929

THIS MAP COMPLIES WITH NATIONAL MAP ACCURACY STANDARDS
FOR SALE BY U.S. GEOLOGICAL SURVEY, DENVER, COLORADO 80225, OR RESTON, VIRGINIA 22092
A FOLDER DESCRIBING TOPOGRAPHIC MAPS AND SYMBOLS IS AVAILABLE ON REQUEST



QUADRANGLE LOCATION

USGS
HISTORICAL FILE
TOPOGRAPHIC DIVISION

COLUMBIA FALLS NORTH, MONT.
N4822.5-W11407.5/7.5

1962

AMS 3180 I NW-SERIES V894

ROAD CLASSIFICATION

Medium-duty ——— Light-duty ———

Unimproved dirt ——— U.S. Route ———

3500

AUG 25 1975