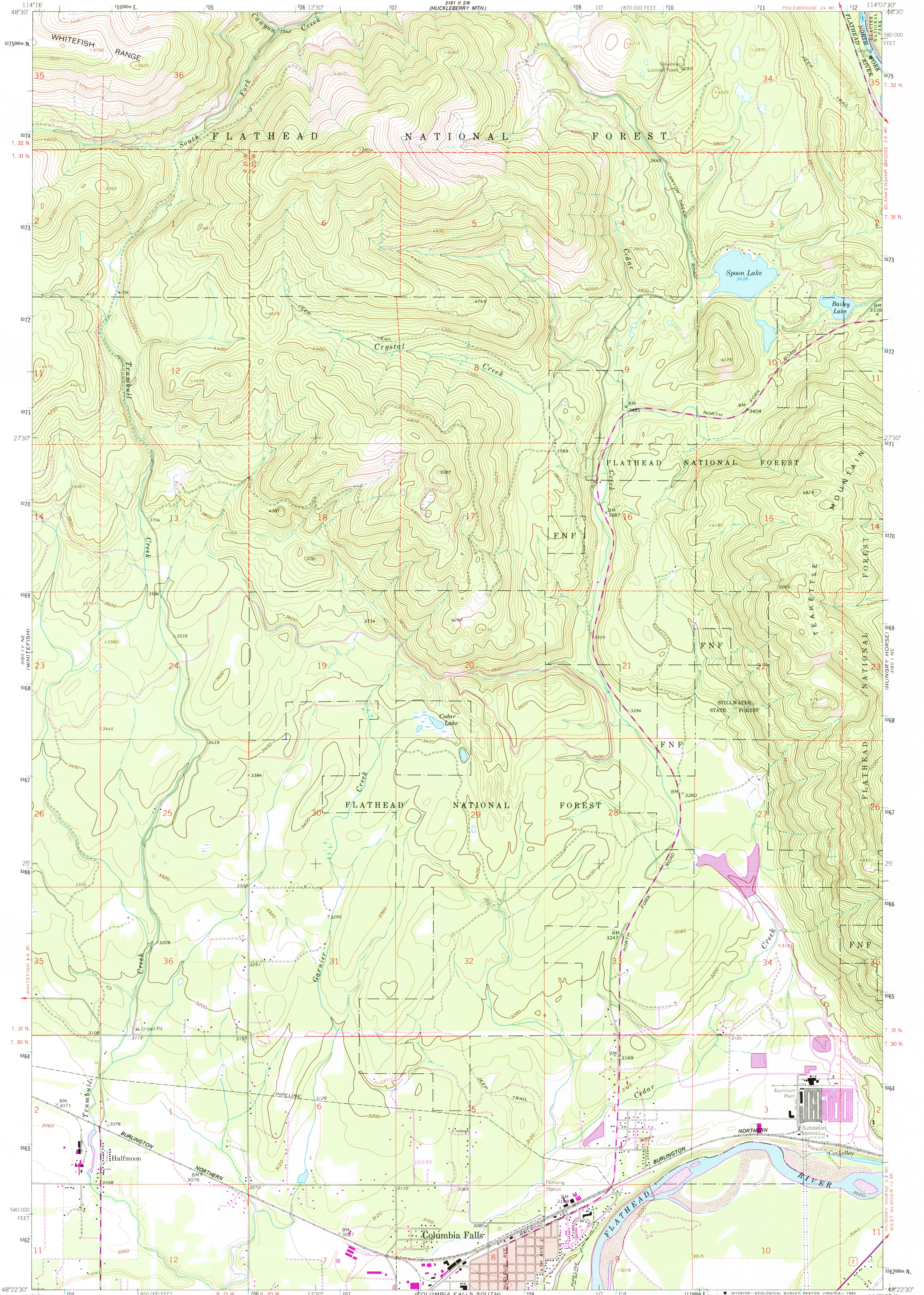


114°15' W 36
1800000 E
114°15' W 36
1800000 E

UNITED STATES
DEPARTMENT OF THE INTERIOR
GEOLOGICAL SURVEY

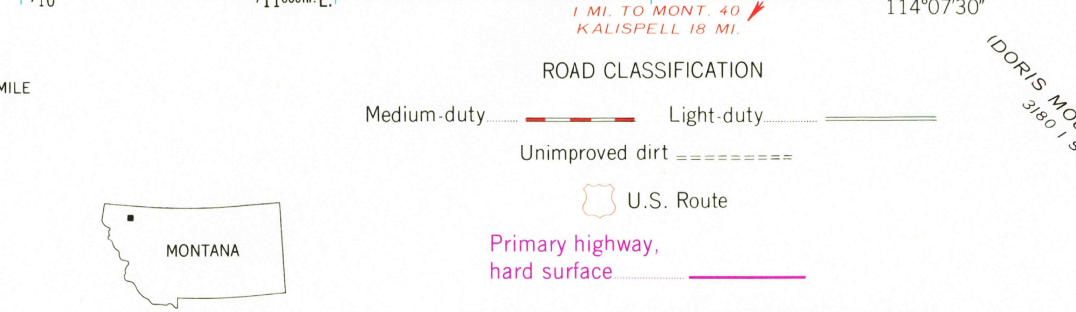
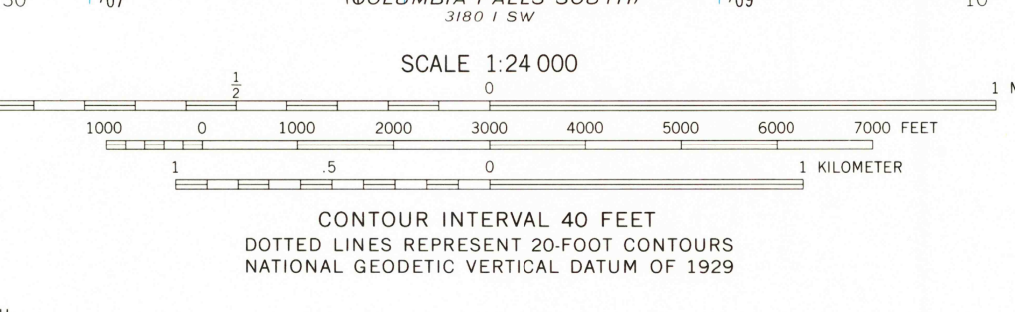
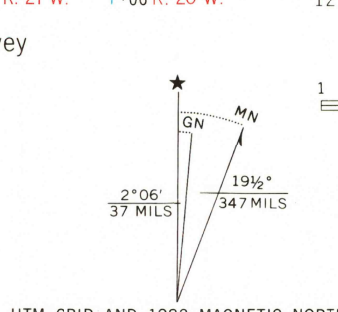
COLUMBIA FALLS NORTH QUADRANGLE
MONTANA-FLATHEAD CO.
7.5 MINUTE SERIES (TOPOGRAPHIC)

114°15' W 36
1800000 E
114°15' W 36
1800000 E



114°15' W 36
1800000 E
114°15' W 36
1800000 E

Mapped, edited, and published by the Geological Survey
Control by USGS and NOS/NOAA
Topography by photogrammetric methods from aerial
photographs taken 1956. Field checked 1962
Polyconic projection. 1927 North American datum
10,000-foot grid based on Montana coordinate system, north zone
1000-meter Universal Transverse Mercator grid ticks,
zone 11, shown in blue
Red tint indicates area in which only landmark buildings are shown
Fine red dashed lines indicate selected fence lines
Where omitted, land lines have not been established
To place on the predicted North American Datum 1983
move the projection lines 12 meters north and
70 meters east as shown by dashed corner ticks
There may be private inholdings within the boundaries
of the National or State reservations shown on this map



DEC 30 1983
RETURN TO:
USGS MMD HISTORICAL MAP ARCHIVES