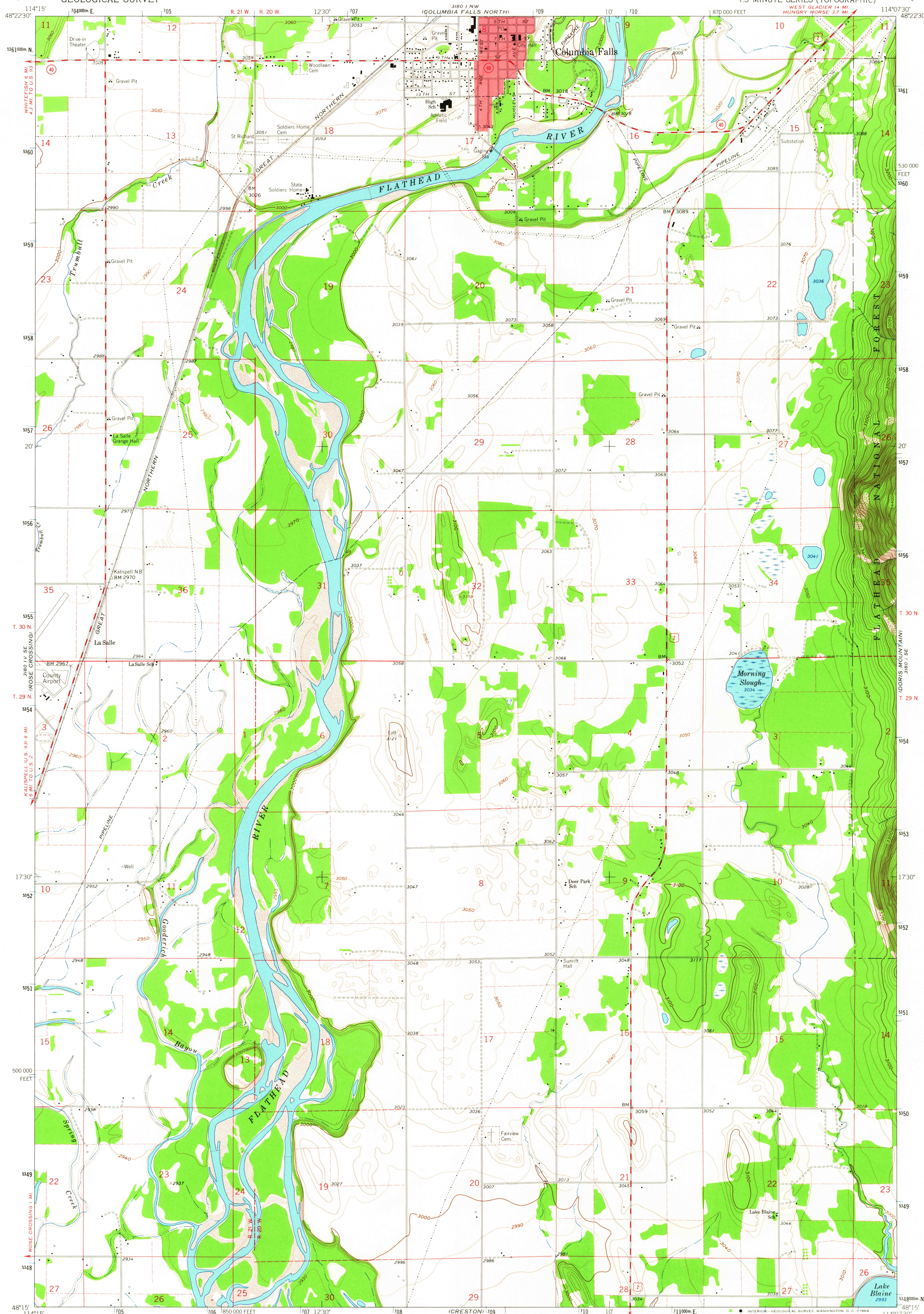


UNITED STATES  
DEPARTMENT OF THE INTERIOR  
GEOLOGICAL SURVEY

COLUMBIA FALLS SOUTH QUADRANGLE  
MONTANA-FLATHEAD CO.  
7.5 MINUTE SERIES (TOPOGRAPHIC)



Mapped, edited, and published by the Geological Survey

Control by USGS and USC&GS

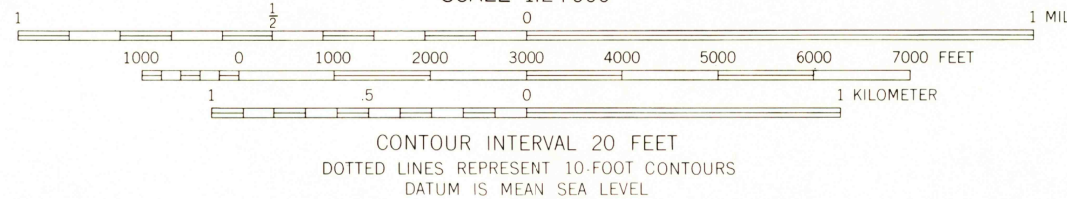
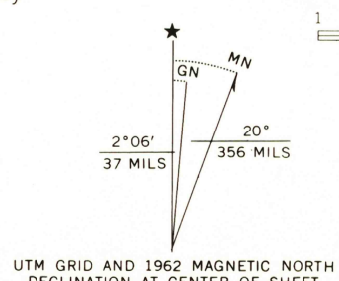
Topography by photogrammetric methods from aerial  
photographs taken 1956. Field checked 1962

Polyconic projection. 1927 North American datum  
10,000-foot grid based on Montana coordinate system, north zone  
1000-meter Universal Transverse Mercator grid ticks,  
zone 11, shown in blue

Red tint indicates area in which only landmark buildings are shown

Fine red dashed lines indicate selected fence lines

Where omitted, land lines have not been established



ROAD CLASSIFICATION  
Medium-duty ——— Light-duty ———  
Unimproved dirt ———  
U.S. Route ——— State Route ———

COLUMBIA FALLS SOUTH, MONT.  
N4815-W11407.5/7.5

1962

AMS 3180 I SW - SERIES V894

USGS  
Historical File  
Topographic Division

JUL 23 1964

2640