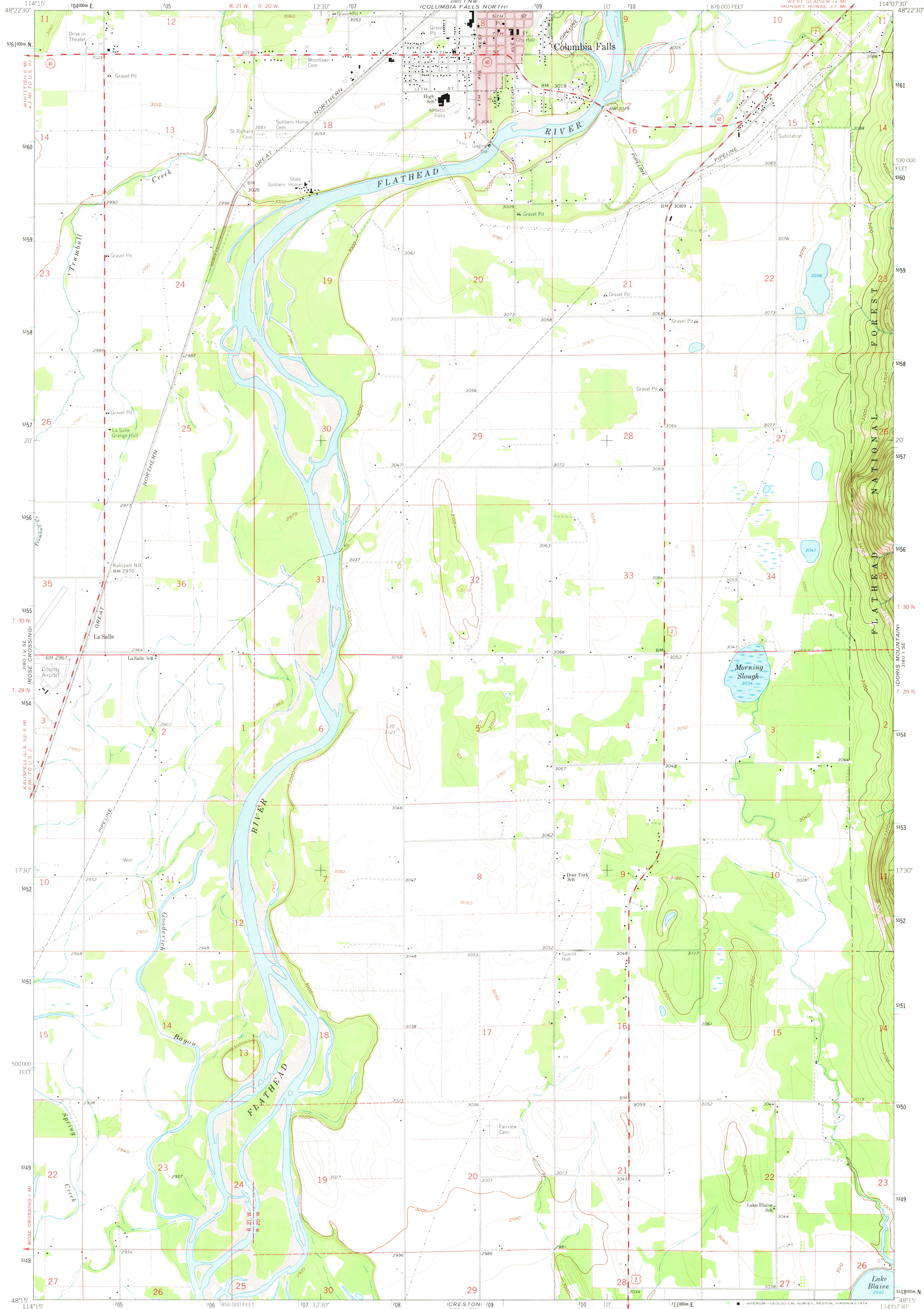


UNITED STATES
DEPARTMENT OF THE INTERIOR
GEOLOGICAL SURVEY

COLUMBIA FALLS SOUTH QUADRANGLE
MONTANA-FLATHEAD CO
7.5 MINUTE SERIES (TOPOGRAPHIC)



Mapped, edited, and published by the Geological Survey

Control by USGS and USC&GS

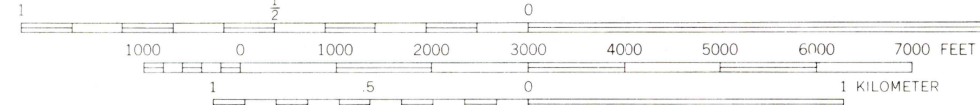
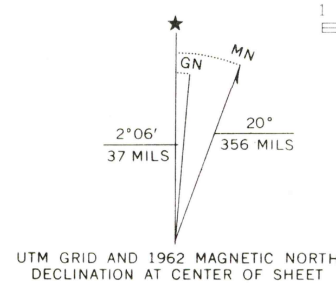
Topography by photogrammetric methods from aerial
photographs taken 1956. Field checked 1962

Polyconic projection. 1927 North American datum
10,000-foot grid based on Montana coordinate system, north zone
1000-meter Universal Transverse Mercator grid ticks,
zone 11, shown in blue

Red tint indicates area in which only landmark buildings are shown

Fine red dashed lines indicate selected fence lines

Where omitted, land lines have not been established



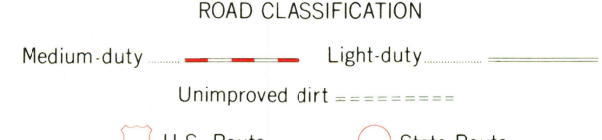
CONTOUR INTERVAL 20 FEET

DOTTED LINES REPRESENT 10 FOOT CONTOURS

DATUM IS MEAN SEA LEVEL



QUADRANGLE LOCATION



ROAD CLASSIFICATION

Medium-duty ——— Light-duty ———

Unimproved dirt ———

U.S. Route ——— State Route ———

COLUMBIA FALLS SOUTH, MONT.

N4815-W11407.5/7.5

1962

AMS 3180 I SW-SERIES V894