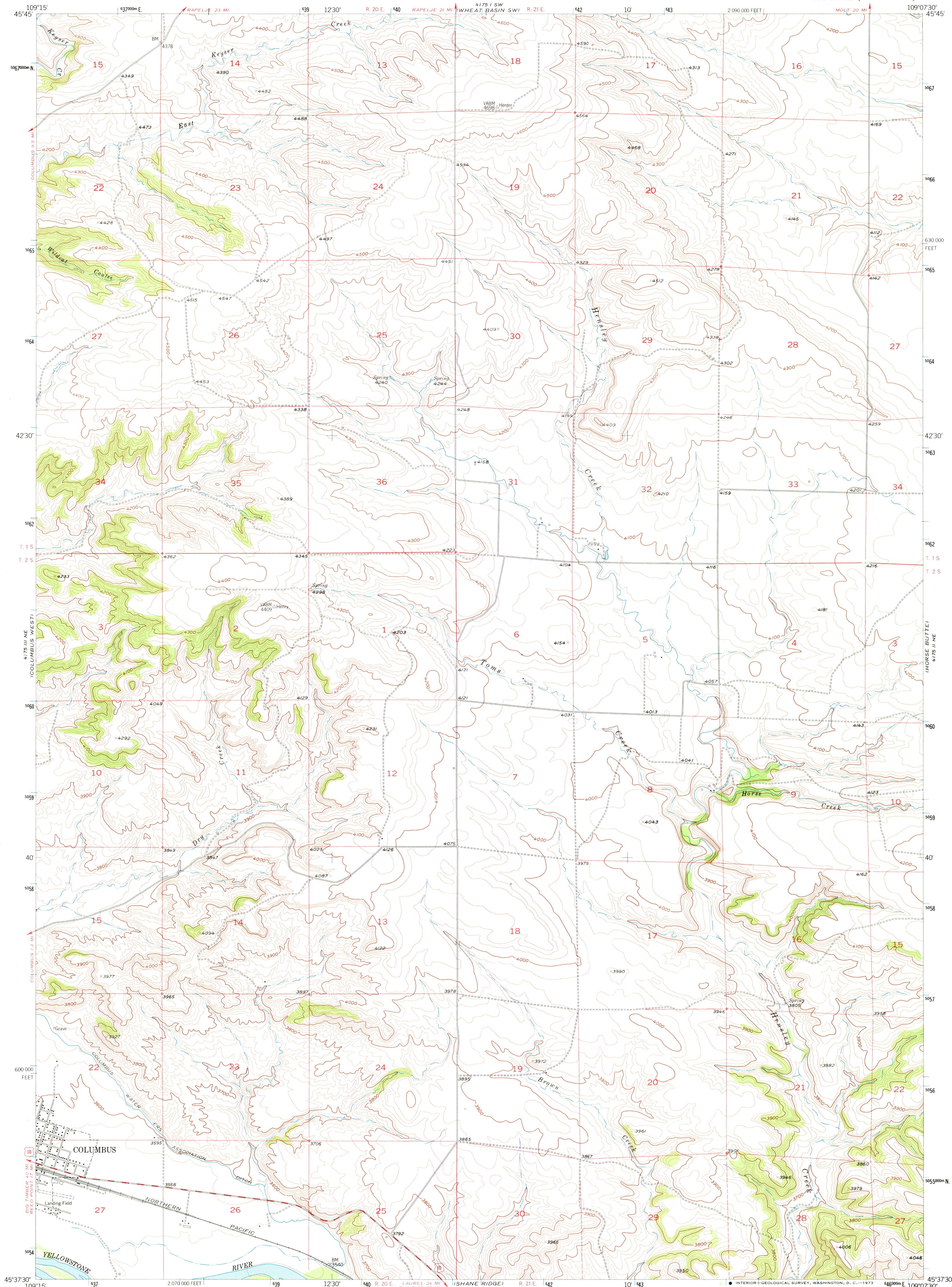


UNITED STATES
DEPARTMENT OF THE INTERIOR
GEOLOGICAL SURVEY

COLUMBUS EAST QUADRANGLE
MONTANA-STILLWATER CO.
7.5 MINUTE SERIES (TOPOGRAPHIC)

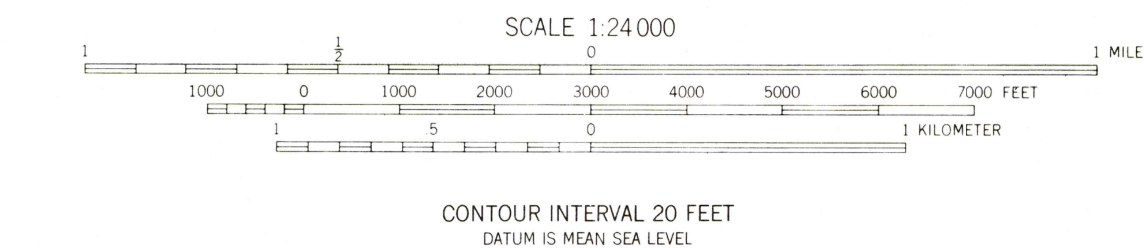
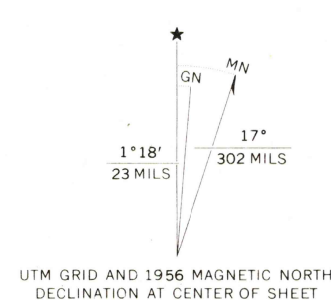


Maped, edited, and published by the Geological Survey as part of the Department of the Interior program for the development of the Missouri River Basin Control by USGS and USC&S

Topography from aerial photographs by multiplex methods and by planetable surveys 1956. Aerial photographs taken 1951

Polyconic projection. 1927 North American datum 10,000-foot grid based on Montana coordinate system, south zone 1000-meter Universal Transverse Mercator grid ticks, zone 12, shown in blue

Dashed land lines indicate approximate locations



ROAD CLASSIFICATION
Medium-duty ——— Light-duty ———
Unimproved dirt ———
U.S. Route OCT 2 1973

COLUMBUS EAST, MONT.
N4537.5-W10907.5/7.5

1956

AMS 4175 II NW-SERIES W894

USGS AND HISTORICAL MAP ARCHIVES

THIS MAP COMPLIES WITH NATIONAL MAP ACCURACY STANDARDS
FOR SALE BY U.S. GEOLOGICAL SURVEY, DENVER, COLORADO 80225, OR WASHINGTON, D. C. 20242
A FOLDER DESCRIBING TOPOGRAPHIC MAPS AND SYMBOLS IS AVAILABLE ON REQUEST