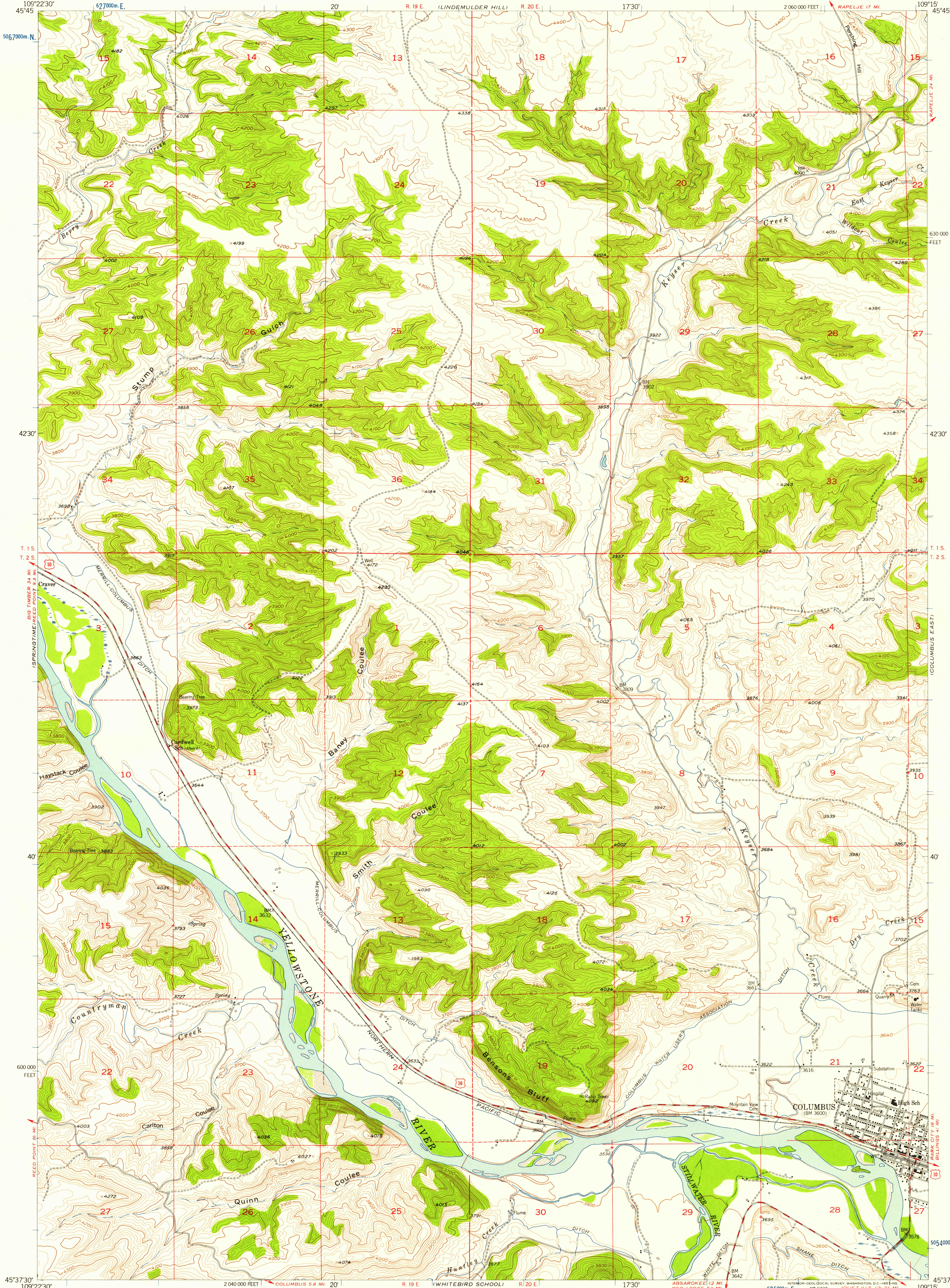


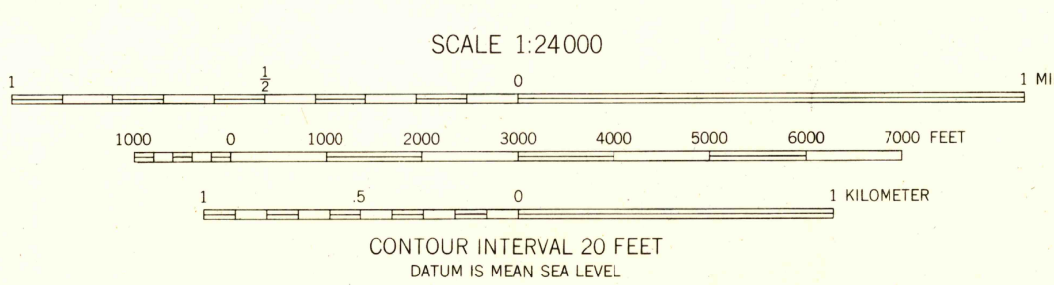
UNITED STATES
DEPARTMENT OF THE INTERIOR
GEOLOGICAL SURVEY

COLUMBUS WEST QUADRANGLE
MONTANA-STILLWATER CO.
7.5 MINUTE SERIES (TOPOGRAPHIC)



Maped, edited, and published by the Geological Survey as part of the Department of the Interior program for the development of the Missouri River Basin Control by USGS and USC&GS
Topography from aerial photographs by multiplex methods Aerial photographs taken 1951. Field check 1956
Polyconic projection. 1927 North American datum 10,000-foot grid based on Montana coordinate system, south zone
1000-meter Universal Transverse Mercator grid ticks, zone 12, shown in blue
Dashed land lines indicate approximate locations

TRUE NORTH
MAGNETIC NORTH
APPROXIMATE MEAN DECLINATION, 1956



ROAD CLASSIFICATION
Medium duty ——— Light duty ———
Unimproved dirt ———
U.S. Route

COLUMBUS WEST, MONT.
N4537.5-W10915.7.5

1956

U.S.G.S.
FILE COPY
Topographic Division

USGS
Historical File
Topographic Division

U.S.G.S.
FILE COPY
Topographic Division

NOV 20 1957
1880