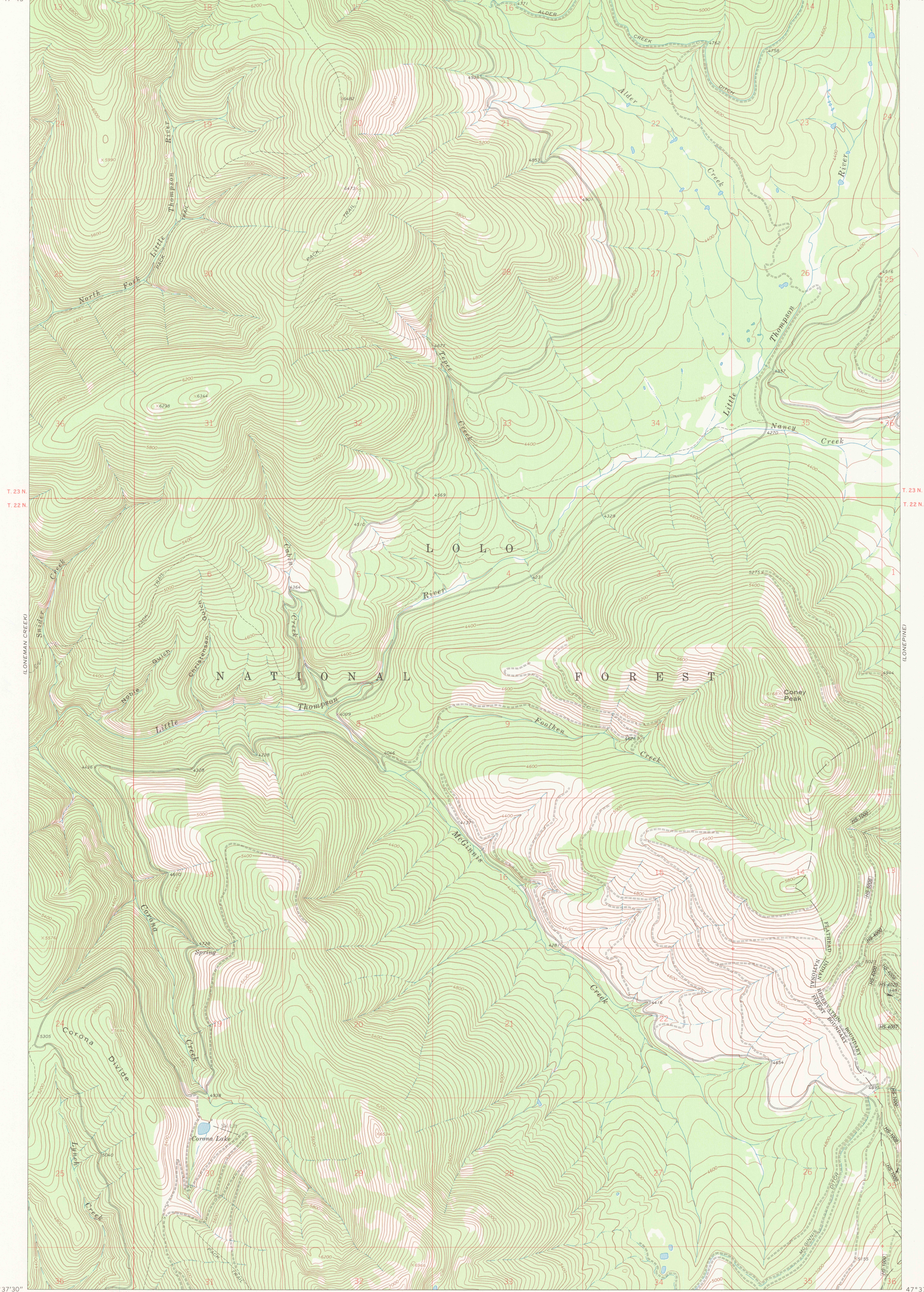


CONEY PEAK QUADRANGLE
FLATHEAD INDIAN RESERVATION
7.5 MINUTE SERIES (TOPOGRAPHIC)

UNITED STATES
DEPARTMENT OF THE INTERIOR
BUREAU OF INDIAN AFFAIRS

114°52'30" R. 26 W. R. 25 W. 114°45' 47°45'



47°37'30" 114°52'30" R. 26 W. R. 25 W. 114°45' 47°37'30"

- LEGEND**
- | | | |
|---|-------------------------|---|
| ROADS | BOUNDARIES | Other |
| Paved road | County | Aerial photo centers 1980 & 1981 flight |
| Surfaced light duty or improved dirt road | Reservation | Indicated corner |
| Unimproved dirt road | Trial Wilderness | Found corner |
| Four-wheel drive trail | Trial Primitive Area | |
| Route designation shield | Power transmission line | |
| | CFI Plot location | |
| RAILROADS | | |
| Single track | | |
| LAND LINES | | |
| Surveyed | | |
| Protected | | |
| Fence lines | | |

SCALE 1:24,000

1 0 1000 2000 3000 4000 5000 6000 7000 FEET

1 0 1 KILOMETER

CONTOUR INTERVAL 40 FEET
DATUM IS MEAN SEA LEVEL

NATIONAL GEODETIC VERTICAL DATUM OF 1929
CONTROL BY USGS AND NOS/NOAA

Prepared by the Geological Survey for
the Bureau of Indian Affairs, Flathead Agency

Compiled in 1989 from USGS 1:24,000-scale quadrangle dated 1964
Revised from aerial photographs taken 1979 and other source data provided by BIA

1989 MAGNETIC NORTH
DECLINATION AT CENTER OF SHEET IS 18°

RETURN TO:
USGS NHD HISTORICAL MAP ARCHIVES

CONEY PEAK, MONT.
FLATHEAD INDIAN RESERVATION
SANDERS CO.