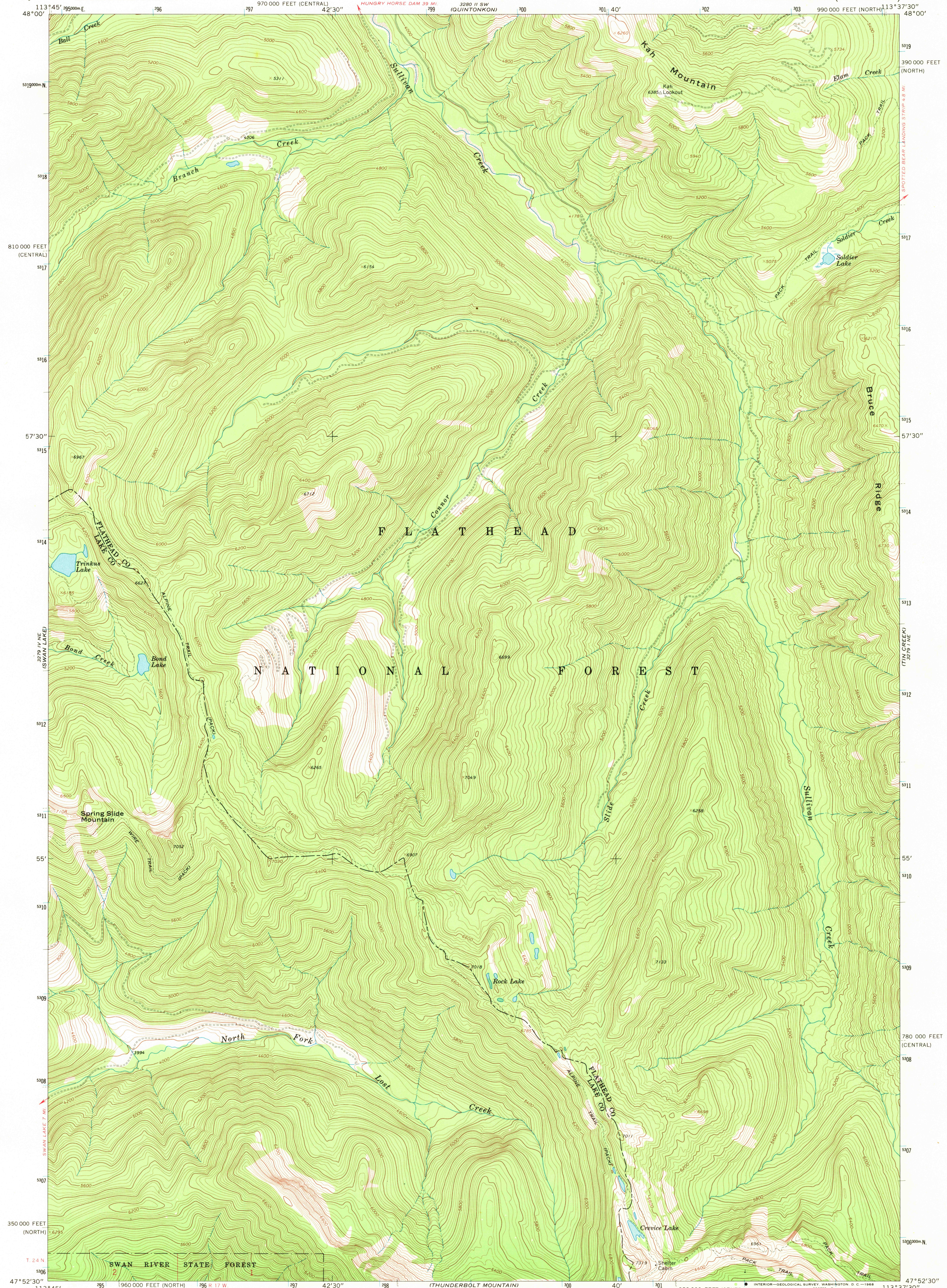


319 1/4 SE
MOUNTAIN

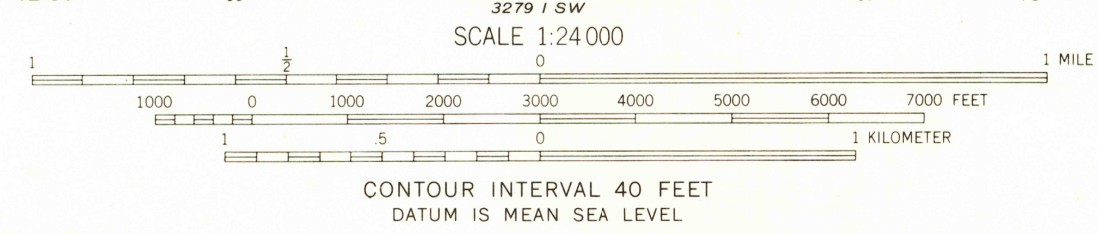
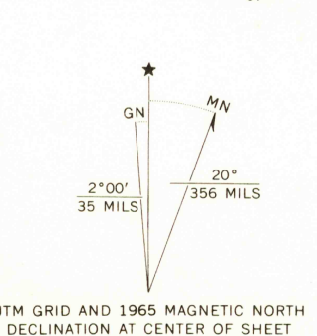
UNITED STATES
DEPARTMENT OF THE INTERIOR
GEOLOGICAL SURVEY

CONNOR CREEK QUADRANGLE
MONTANA
7.5 MINUTE SERIES (TOPOGRAPHIC)

319 1/4 SE
CIRCUS PEAK



Mapped, edited, and published by Geological Survey
Control by USGS and USC&GS
Topography by photogrammetric methods from aerial
photographs taken 1964. Field checked 1965
Polyconic projection. 1927 North American datum
10,000-foot grids based on Montana coordinate system,
north and central zones
1000-meter Universal Transverse Mercator grid ticks,
zone 12, shown in blue
Where omitted, land lines have not been established



ROAD CLASSIFICATION
Light-duty ————— Unimproved dirt —————

CONNOR CREEK, MONT.
N4752.5—W11337.5/7.5
1965
AMS 3279 I NW—SERIES V894

U.S.G.S.
FILE COPY
TOPOGRAPHIC DIVISION

USGS
Historical File
Topographic Division

2150
OCT 2 1968

THIS MAP COMPLIES WITH NATIONAL MAP ACCURACY STANDARDS
FOR SALE BY U.S. GEOLOGICAL SURVEY, DENVER, COLORADO 80225, OR WASHINGTON, D.C. 20242
A FOLDER DESCRIBING TOPOGRAPHIC MAPS AND SYMBOLS IS AVAILABLE ON REQUEST