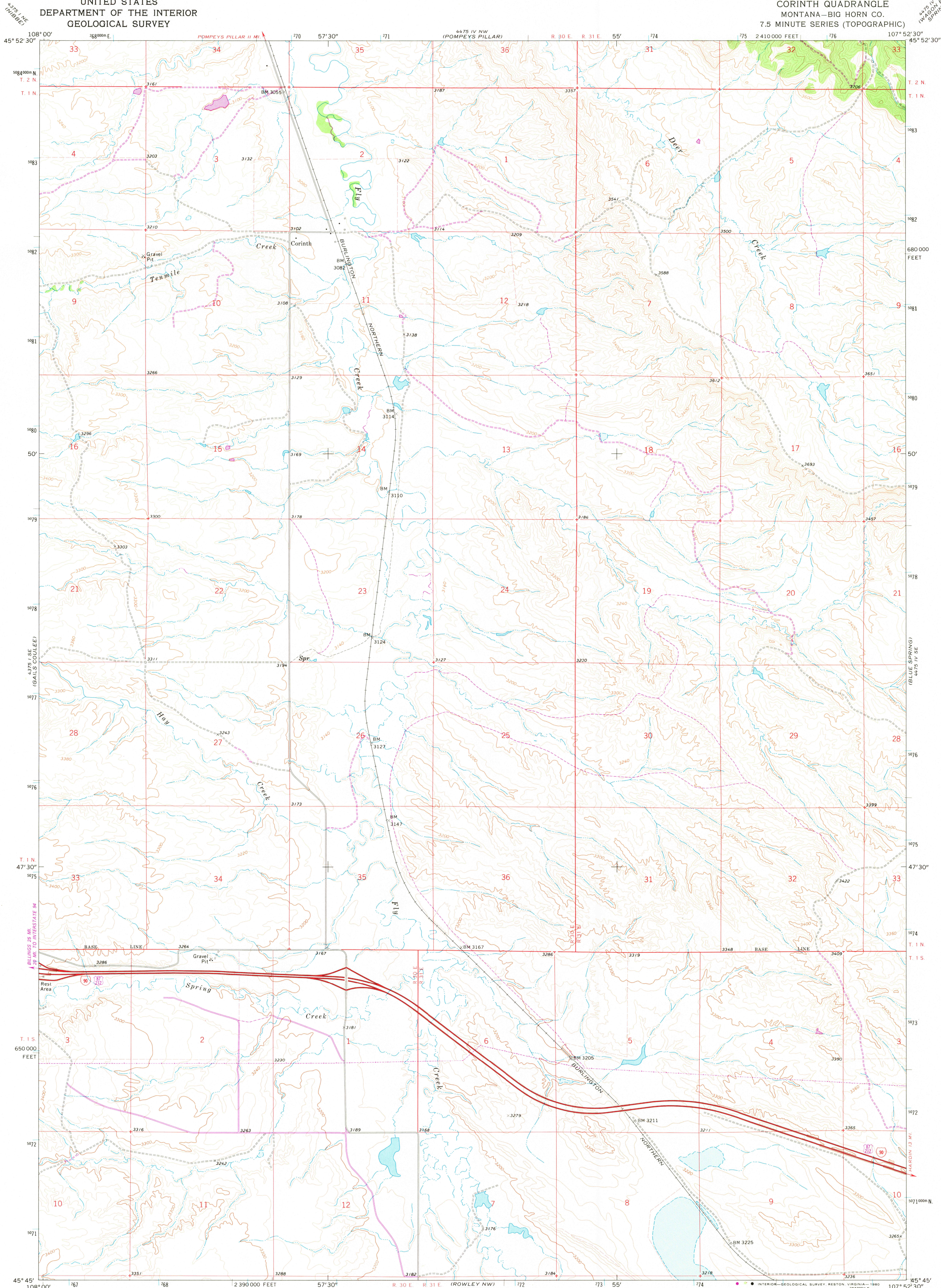


UNITED STATES  
DEPARTMENT OF THE INTERIOR  
GEOLOGICAL SURVEY

CORINTH QUADRANGLE  
MONTANA—BIG HORN CO.  
7.5 MINUTE SERIES (TOPOGRAPHIC)



Mapped, edited, and published by the Geological Survey

Control by USGS and USC&GS

Topography by photogrammetric methods from aerial photographs taken 1968. Field checked 1969

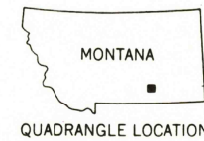
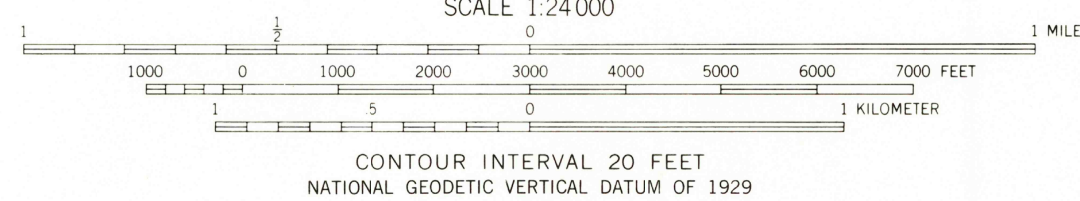
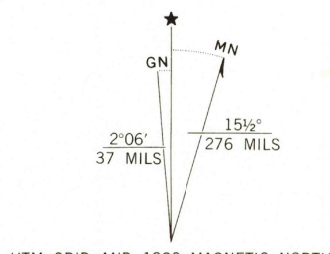
Polyconic projection. 1927 North American datum

10,000-foot grid based on Montana coordinate system, south zone

1000-meter Universal Transverse Mercator grid ticks, zone 13, shown in blue

To place on the predicted North American Datum 1983 move the projection lines 8 meters north and 52 meters east as shown by dashed corner ticks

Revisions shown in purple compiled from aerial photographs taken 1978. Map edited 1980. This information not field checked



ROAD CLASSIFICATION	
Primary highway, hard surface	Light-duty road, hard or improved surface
Secondary highway, hard surface	Unimproved road
Interstate Route	U. S. Route
	State Route

CORINTH, MONT.  
N4545—W10752.5/7.5

1969  
PHOTOGRAPHED 1980  
DMA 4475 IV SW—SERIES V894

NOV 28 1980  
2000