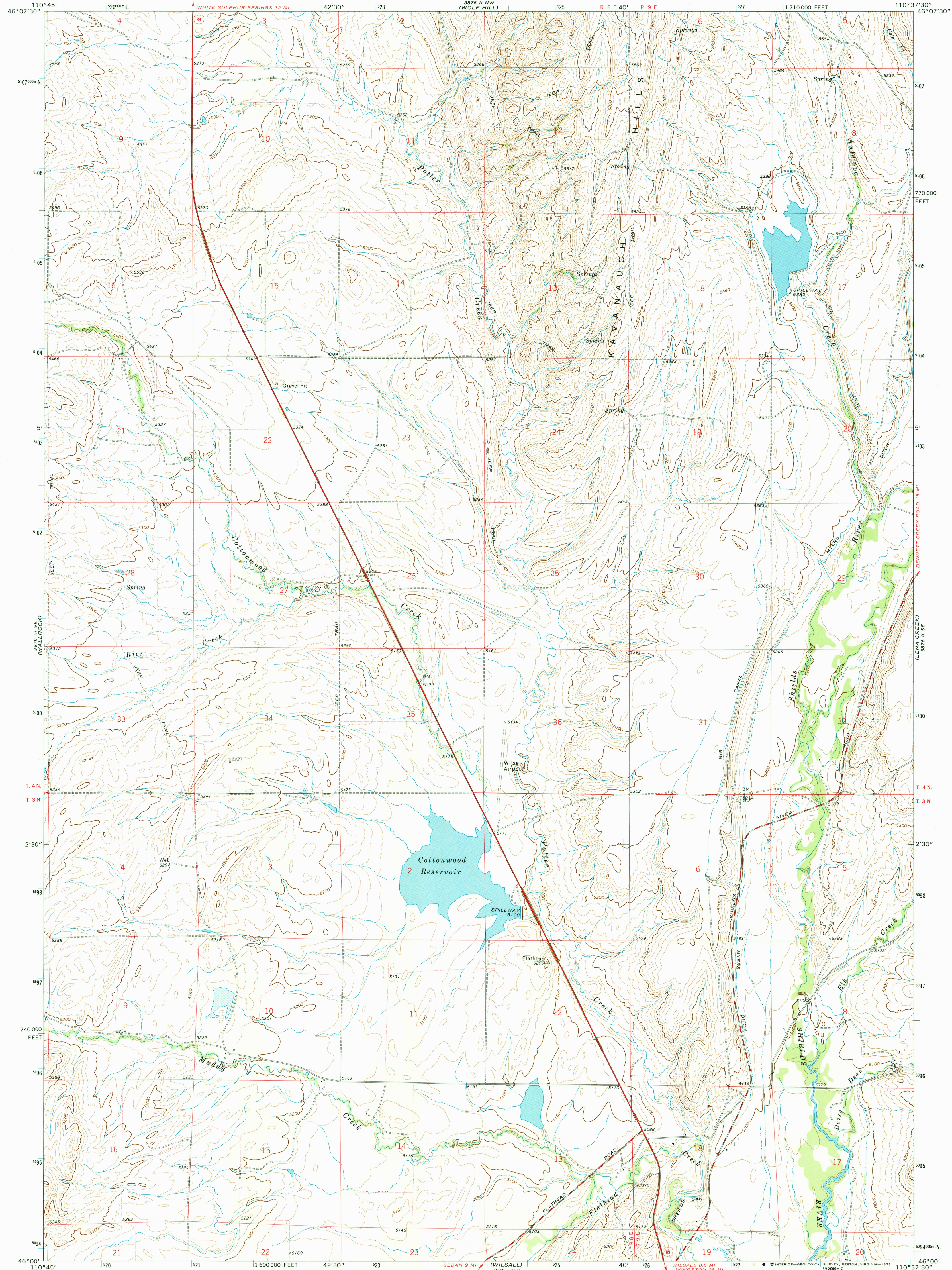


3876 11 NW
(WOLF HILL)

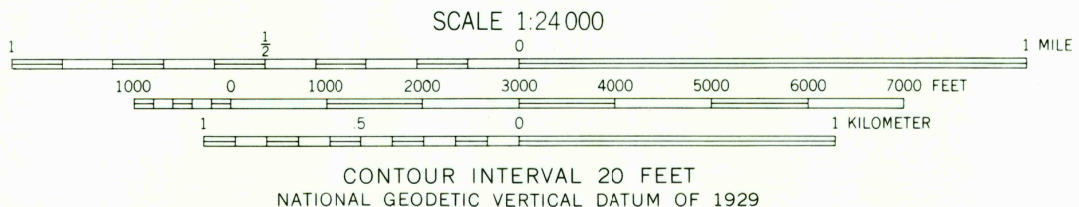
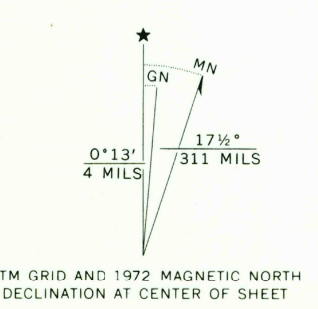
UNITED STATES
DEPARTMENT OF THE INTERIOR
GEOLOGICAL SURVEY

COTTONWOOD RESERVOIR QUADRANGLE
MONTANA—PARK CO.
7.5 MINUTE SERIES (TOPOGRAPHIC)

3876 11 NE
(SCAR ROCK
MOUNTAIN)



Mapped, edited, and published by the Geological Survey
Control by USGS and USC&GS
Topography by photogrammetric methods from aerial
photographs taken 1970. Field checked 1972
Projection and 10,000-foot grid ticks: Montana
coordinate system, south zone (Lambert conformal conic)
1000-meter Universal Transverse Mercator grid ticks,
zone 12, shown in blue. 1927 North American datum
Fine red dashed lines indicate selected fence lines



ROAD CLASSIFICATION
Primary highway, hard surface
Secondary highway, hard surface
Unimproved road
Interstate Route
U. S. Route
State Route

COTTONWOOD RESERVOIR, MONT.
N4600—W11037.5/7.5

1972
AMS 3876 11 SW—SERIES V894

SEP 25 1975

2500