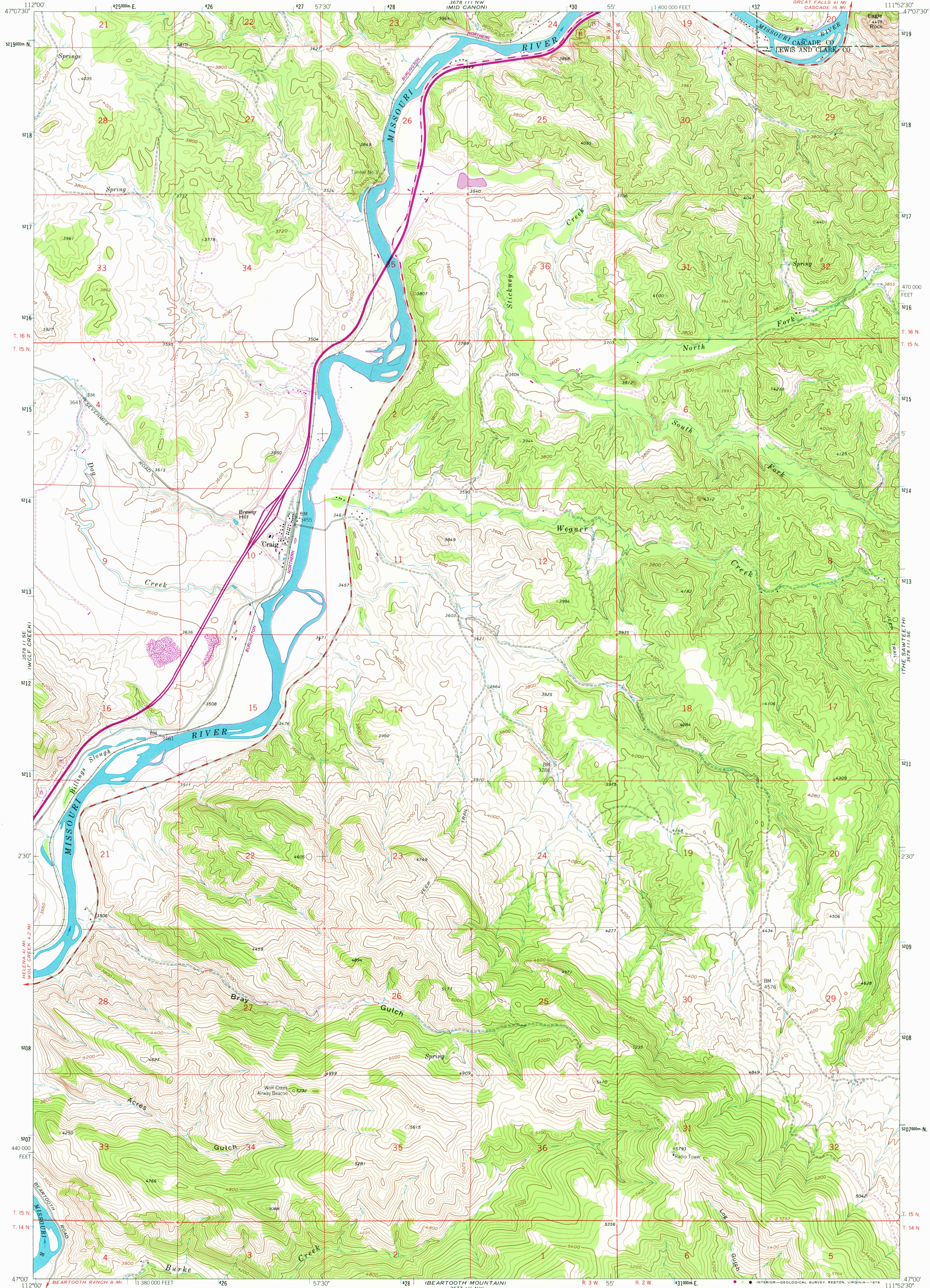
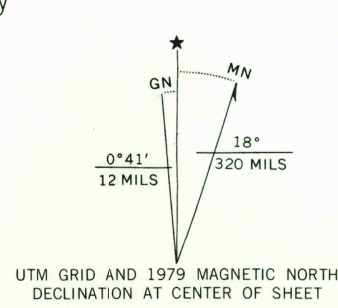


UNITED STATES  
DEPARTMENT OF THE INTERIOR  
GEOLOGICAL SURVEY

CRAIG QUADRANGLE  
MONTANA  
7.5 MINUTE SERIES (TOPOGRAPHIC)



Mapped, edited, and published by the Geological Survey  
Control by USGS and USC&GS  
Topography by photogrammetric methods from aerial  
photographs taken 1956. Field checked 1961  
Polyconic projection. 1927 North American datum  
10,000-foot grid based on Montana coordinate system, central zone  
1000-meter Universal Transverse Mercator grid ticks,  
zone 12, shown in blue  
Fine red dashed lines indicate selected fence lines  
Revisions shown in purple compiled from aerial photographs  
taken 1976 and other source data. This information not  
field checked. Map edited 1979



SCALE 1:24,000  
CONTOUR INTERVAL 40 FEET  
DOTTED LINES REPRESENT 20-FOOT CONTOURS  
NATIONAL GEODETIC VERTICAL DATUM OF 1929

ROAD CLASSIFICATION  
Primary highway, all weather, hard surface  
Secondary highway, all weather, hard surface  
Light-duty road, all weather, improved surface  
Unimproved road, fair or dry weather  
Interstate Route  
U. S. Route  
State Route



THIS MAP COMPLIES WITH NATIONAL MAP ACCURACY STANDARDS  
FOR SALE BY U. S. GEOLOGICAL SURVEY, DENVER, COLORADO 80225, OR RESTON, VIRGINIA 22092  
A FOLDER DESCRIBING TOPOGRAPHIC MAPS AND SYMBOLS IS AVAILABLE ON REQUEST

CRAIG, MONT.  
N4700-W1152.5/7.5  
1961  
PHOTOREVISED 1979  
AMS 3678-III SW-SERIES V894

RETURN TO:  
USGS AND HISTORICAL MAP ARCHIVES

OCT 22 1982

2700