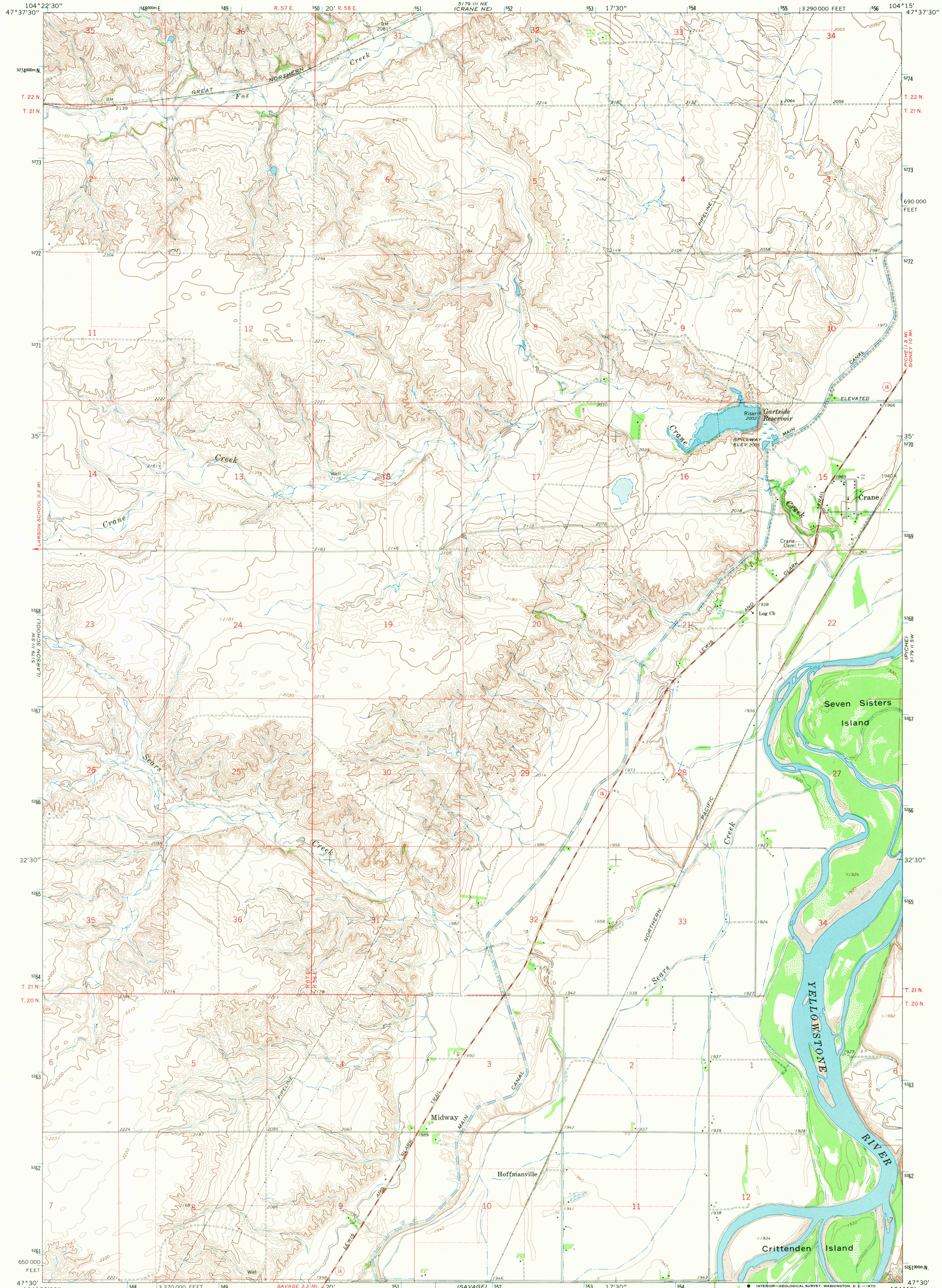


5179 III NW  
(CRANE NW)

UNITED STATES  
DEPARTMENT OF THE INTERIOR  
GEOLOGICAL SURVEY

CRANE QUADRANGLE  
MONTANA—RICHLAND CO.  
7.5 MINUTE SERIES (TOPOGRAPHIC)

5179 I NW  
(SIDNEY)



Mapped, edited, and published by the Geological Survey as part of the Department of the Interior program for the development of the Missouri River Basin Control by USGS and USC&GS

Topography by photogrammetric methods from aerial photographs taken 1965. Field checked 1966

Polyconic projection. 1927 North American datum

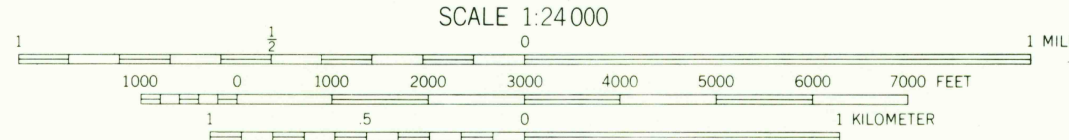
10,000-foot grid based on Montana coordinate system, central zone

1000-meter Universal Transverse Mercator grid ticks, zone 13, shown in blue

Fine red dashed lines indicate selected fence lines

Areas covered by dashed light-blue pattern are subject to controlled inundation

UTM GRID AND 1966 MAGNETIC NORTH DECLINATION AT CENTER OF SHEET



CONTOUR INTERVAL 10 FEET  
DATUM IS MEAN SEA LEVEL

THIS MAP COMPLIES WITH NATIONAL MAP ACCURACY STANDARDS  
FOR SALE BY U. S. GEOLOGICAL SURVEY, DENVER, COLORADO 80225, OR WASHINGTON, D. C. 20242  
A FOLDER DESCRIBING TOPOGRAPHIC MAPS AND SYMBOLS IS AVAILABLE ON REQUEST

ROAD CLASSIFICATION  
Medium-duty ——— Light-duty ———  
Unimproved dirt ———  
State Route ———



QUADRANGLE LOCATION

USGS  
FILE COPY  
TOPOGRAPHIC DIVISION

CRANE, MONT.  
N4730—W10415/7.5

1966

AMS 5179 III SE—SERIES V894

USGS  
Historical File  
Topographic Division

2305