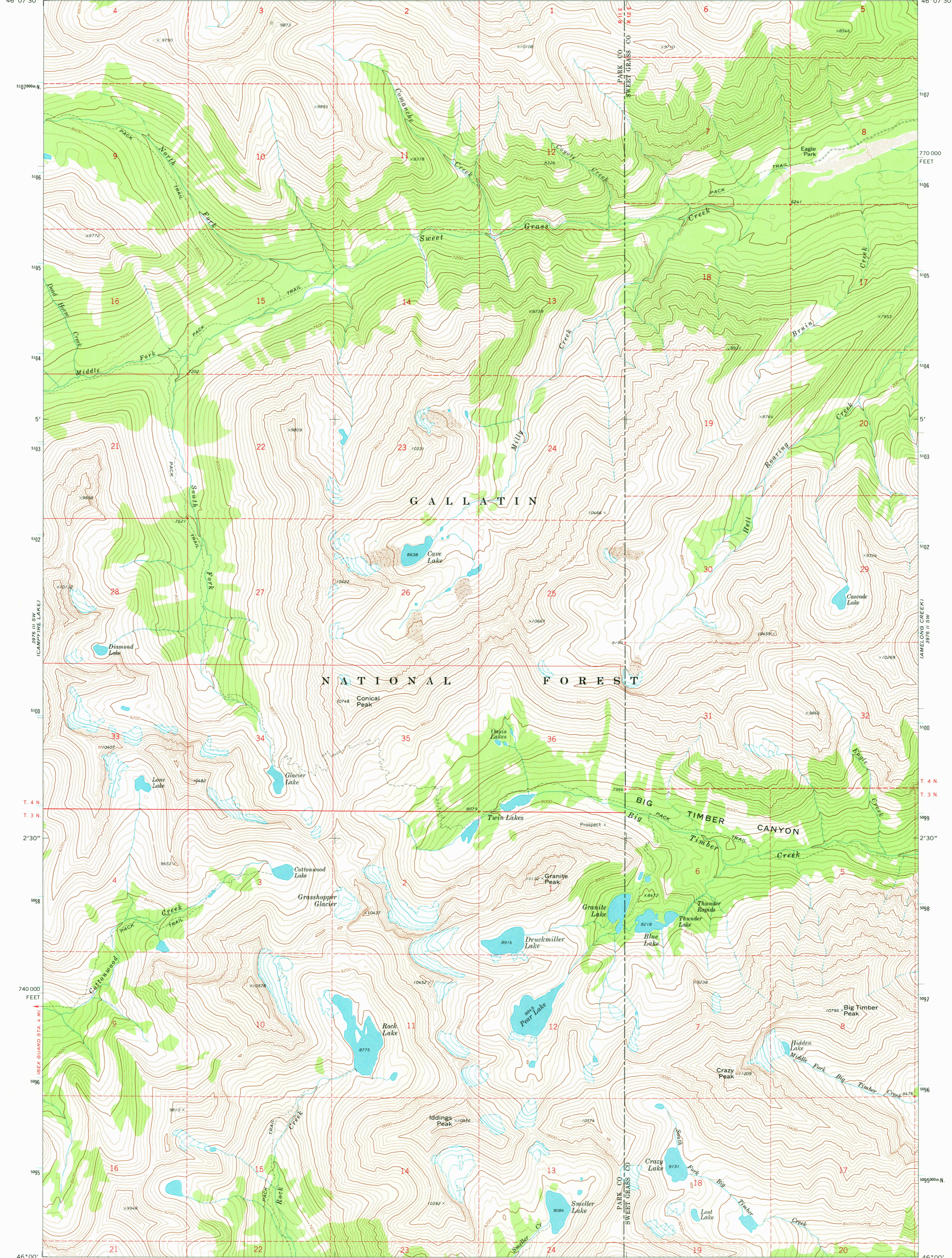
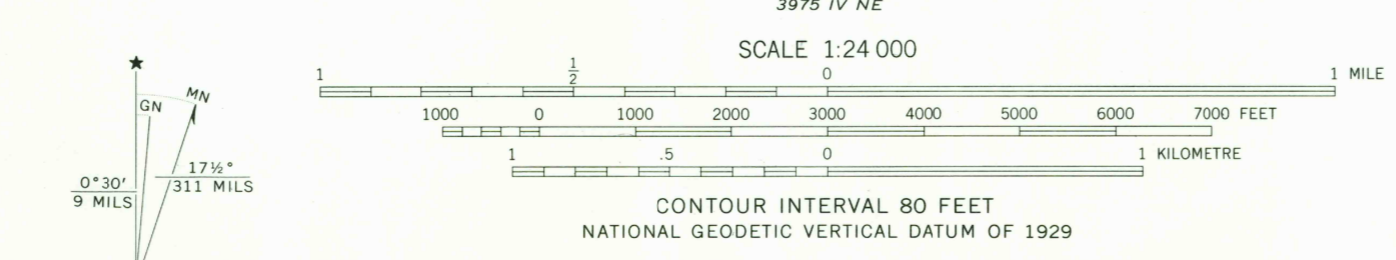


110° 22' 30" 46° 07' 30" 110° 15' 46° 07' 30" 3976 III NE (LOCO MOUNTAIN) 17° 30" 180000 FEET 156 157 158



Mapped, edited, and published by the Geological Survey
Control by USGS and NOS/NOAA
Topography by photogrammetric methods from aerial photographs taken 1970. Field checked 1972
Projection and 10,000-foot grid ticks: Montana coordinate system, south zone (Lambert conformal conic) 1000-metre Universal Transverse Mercator grid ticks, zone 12, shown in blue. 1927 North American datum



ROAD CLASSIFICATION
Primary highway, hard surface
Secondary highway, hard surface
Unimproved road
Light-duty road, hard or improved surface
Unimproved road
Interstate Route
U. S. Route
State Route



CRAZY PEAK, MONT.
N4600-W11015/7.5

THIS MAP COMPLIES WITH NATIONAL MAP ACCURACY STANDARDS
FOR SALE BY U.S. GEOLOGICAL SURVEY, DENVER, COLORADO 80225, OR RESTON, VIRGINIA 22092
A FOLDER DESCRIBING TOPOGRAPHIC MAPS AND SYMBOLS IS AVAILABLE ON REQUEST

1972
AMS 3976 III SE—SERIES V894

OCT 11 1988
DUPLICATE
RETURN TO:
USGS NMD HISTORICAL MAP ARCHIVES