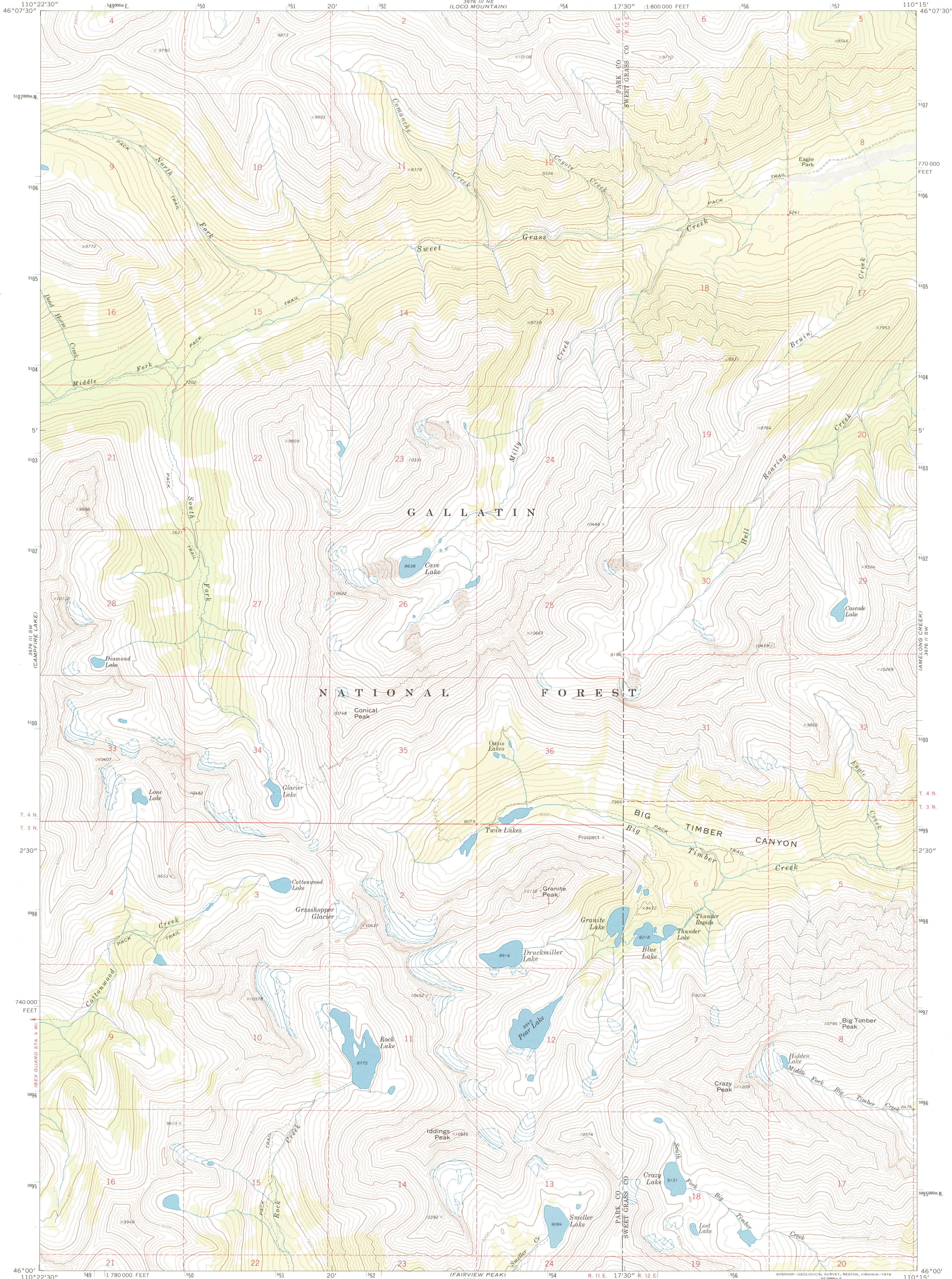
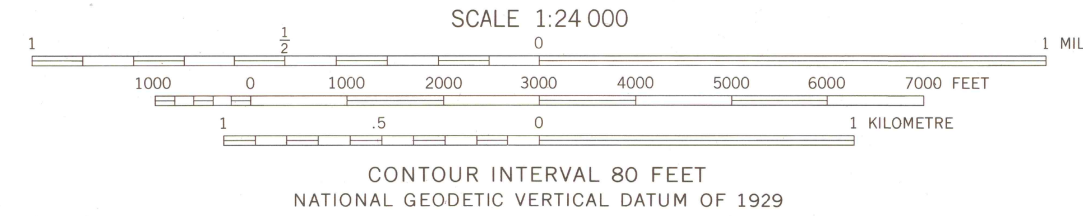
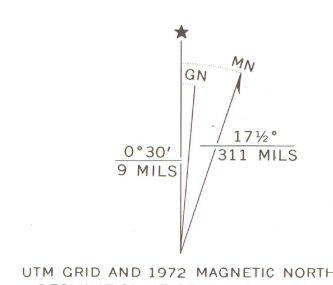


UNITED STATES
DEPARTMENT OF THE INTERIOR
GEOLOGICAL SURVEY

CRAZY PEAK QUADRANGLE
MONTANA
7.5 MINUTE SERIES (TOPOGRAPHIC)



Mapped, edited, and published by the Geological Survey
Control by USGS and NOS/NOAA
Topography by photogrammetric methods from aerial
photographs taken 1970. Field checked 1972
Projection and 10,000-foot grid ticks: Montana
coordinate system, south zone (Lambert conformal conic)
1000-metre Universal Transverse Mercator grid ticks,
zone 12, shown in blue. 1927 North American datum



ROAD CLASSIFICATION
Primary highway, hard surface
Secondary highway, hard surface
Unimproved road
Interstate Route
U. S. Route
State Route

CRAZY PEAK, MONT.
N4600-W11015/7.5
1972

AMS 3976 III SE-SERIES V894

