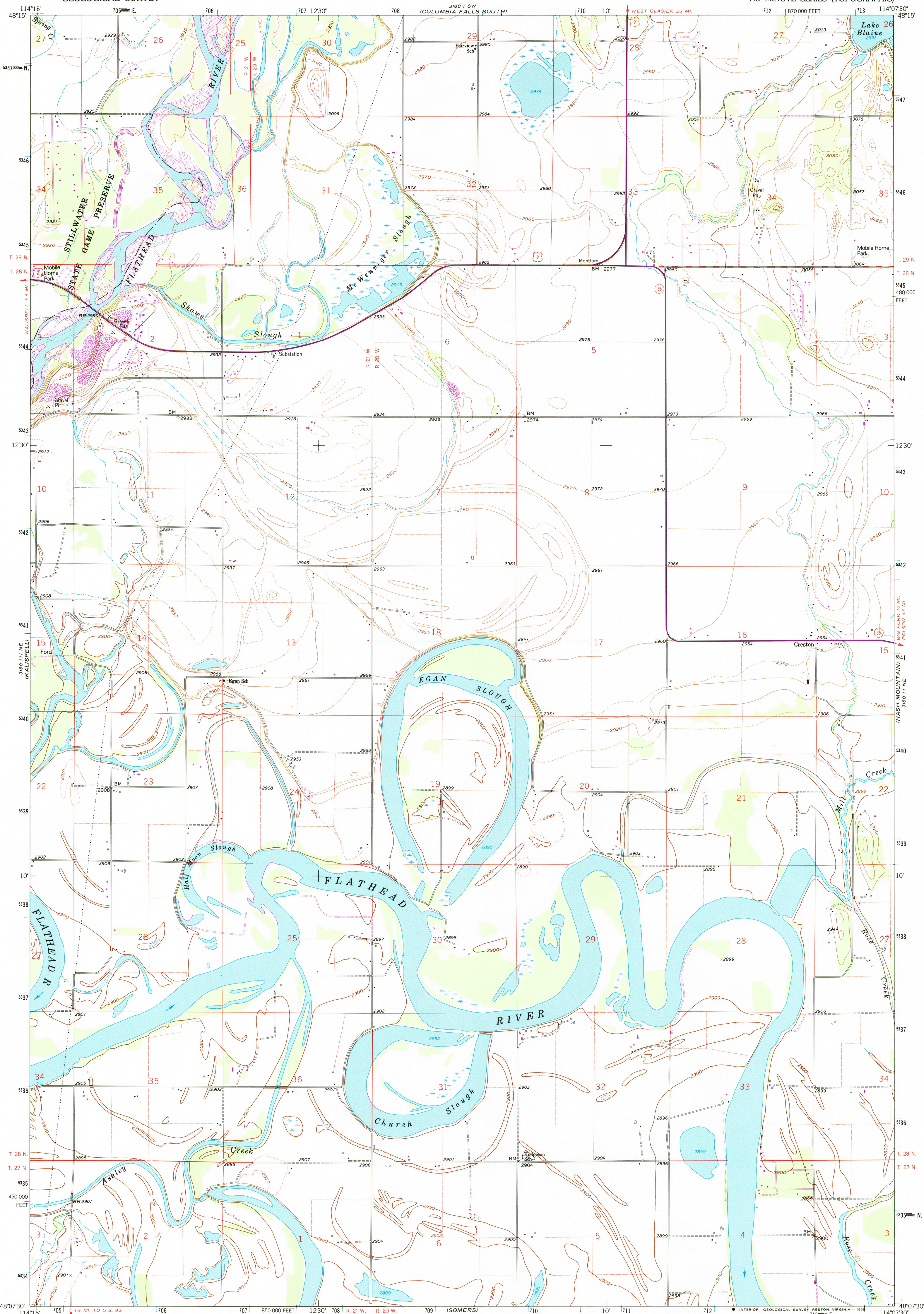


UNITED STATES
DEPARTMENT OF THE INTERIOR
GEOLOGICAL SURVEY

CRESTON QUADRANGLE
MONTANA-FLATHEAD CO.
7.5 MINUTE SERIES (TOPOGRAPHIC)

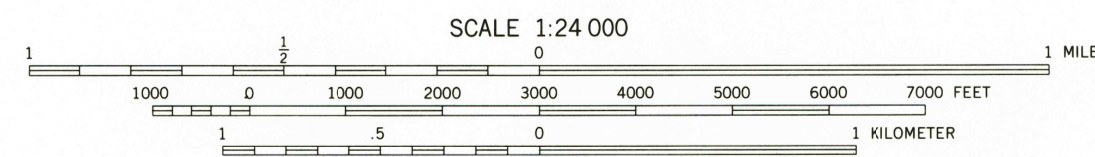
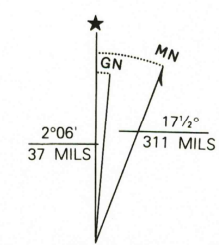


Produced by the United States Geological Survey
Control by USGS and NOS/NOAA

Compiled from imagery taken 1956. Photinspected using
imagery dated 1991; no major culture or drainage changes
observed. PLSS and survey control current as of 1962
Boundaries and names revised 1994

North American Datum of (NAD 27). Projection and
10000-foot ticks: Montana Coordinate System, north zone
(Lambert Conformal Conic)
Blue 1000-meter Universal Transverse Mercator ticks, zone 11
North American Datum of 1983 (NAD 83) is shown by dashed
corner ticks. The values of the shift between NAD 27 and NAD 83
for 7.5-minute intersections are obtainable from National Geodetic
Survey NADCON software

There may be private inholdings within the boundaries of the
National or State reservations shown on this map
Fine red dashed lines indicate selected fence lines



THIS MAP COMPLIES WITH NATIONAL MAP ACCURACY STANDARDS
FOR SALE BY U.S. GEOLOGICAL SURVEY
DENVER, COLORADO 80225, OR RESTON, VIRGINIA 22092
A FOLDER DESCRIBING TOPOGRAPHIC MAPS AND SYMBOLS IS AVAILABLE ON REQUEST



ROAD CLASSIFICATION
Primary highway, hard surface
Secondary highway, hard surface
Unimproved road
Light-duty road, hard or improved surface
Interstate Route
U. S. Route
State Route

CRESTON, MT
48114-B2-TF-024

1991

DMA 3180 II NW-SERIES V894

Revisions shown in purple and woodland compiled from
aerial photographs taken 1979 and other source data
This information not field checked. Map edited 1982

