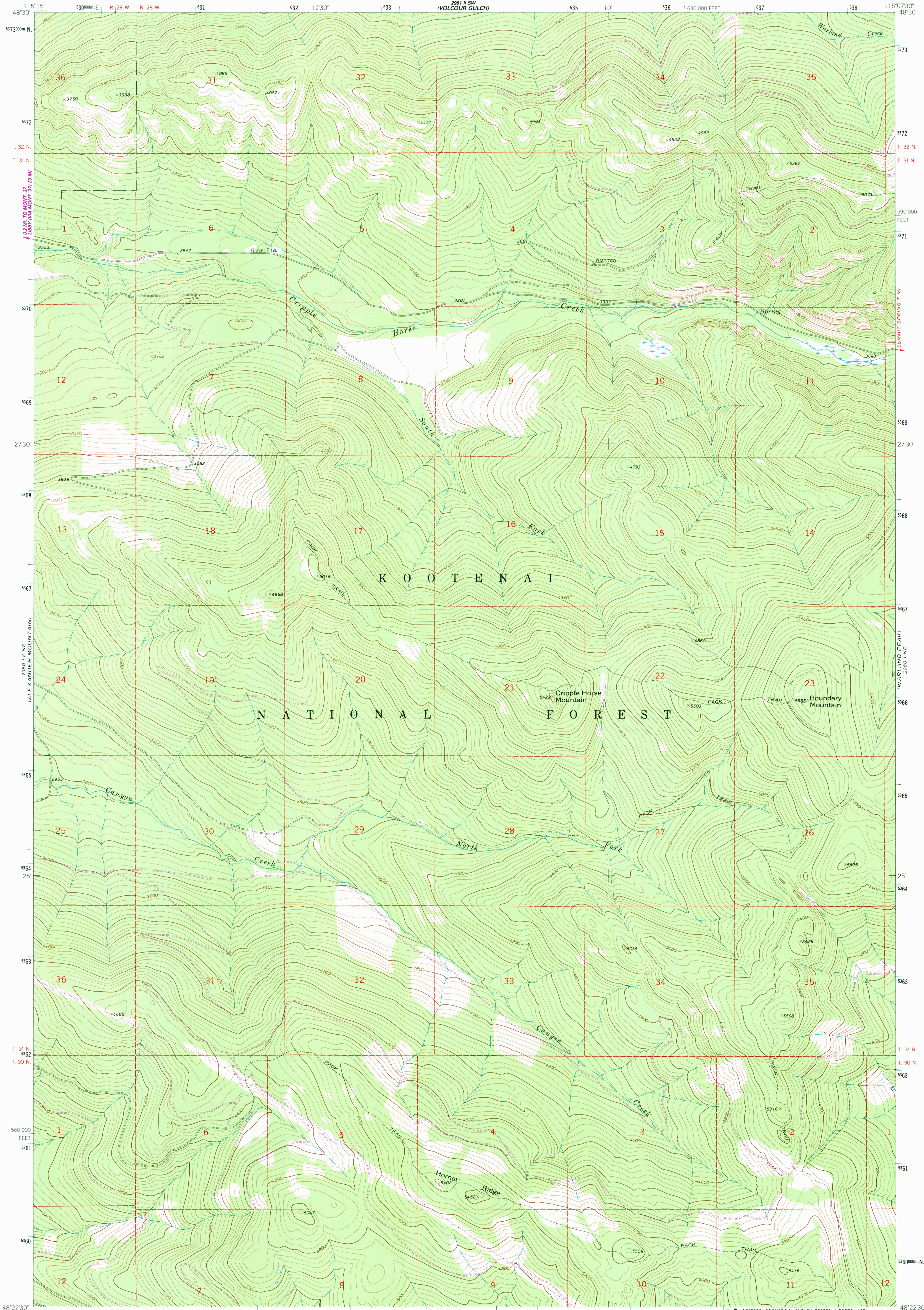


2891 II SE  
ORAL CREEK

UNITED STATES  
DEPARTMENT OF THE INTERIOR  
GEOLOGICAL SURVEY

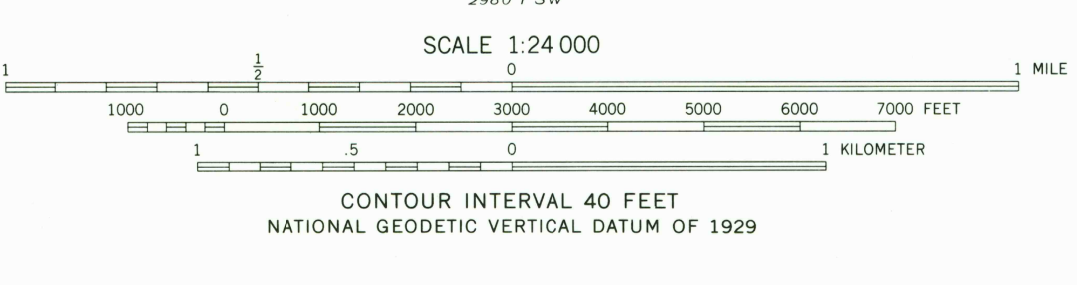
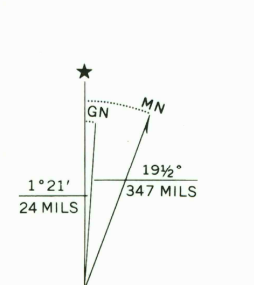
CRIPPLE HORSE MOUNTAIN QUADRANGLE  
MONTANA-LINCOLN CO.  
7.5 MINUTE SERIES (TOPOGRAPHIC)

2891 I SE  
DAVIS MOUNTAIN



2891 I SE  
TROY PEAVY

Mapped, edited, and published by the Geological Survey  
Control by USGS and NOS/NOAA  
Topography by photogrammetric methods from aerial photographs taken 1962 and 1963. Field checked 1963  
Polyconic projection: 1927 North American Datum  
10,000-foot grid based on Montana coordinate system, north zone  
1000-meter Universal Transverse Mercator grid ticks, zone 11, shown in blue  
There may be private inholdings within the boundaries of the National or State reservations shown on this map  
To place on the predicted North American Datum 1983 move the projection lines 12 meters north and 73 meters east as shown by dashed corner ticks



ROAD CLASSIFICATION  
Light-duty ——— Unimproved dirt - - - - -

CRIPPLE HORSE MOUNTAIN, MONT.  
48115-D2-TF-024

THIS MAP COMPLIES WITH NATIONAL MAP ACCURACY STANDARDS  
FOR SALE BY U. S. GEOLOGICAL SURVEY, DENVER, COLORADO 80225, OR RESTON, VIRGINIA 22092  
A FOLDER DESCRIBING TOPOGRAPHIC MAPS AND SYMBOLS IS AVAILABLE ON REQUEST

Revisions shown in purple and woodland compiled from aerial photographs taken 1982 and other source data. Partial field check by U.S. Forest Service. Map edited 1983  
1963  
PHOTOREVISED 1983  
DMA 2880 I NW-SERIES V894

FEB 21 1984

RETURN TO:  
USGS NMD HISTORICAL MAP ARCHIVES