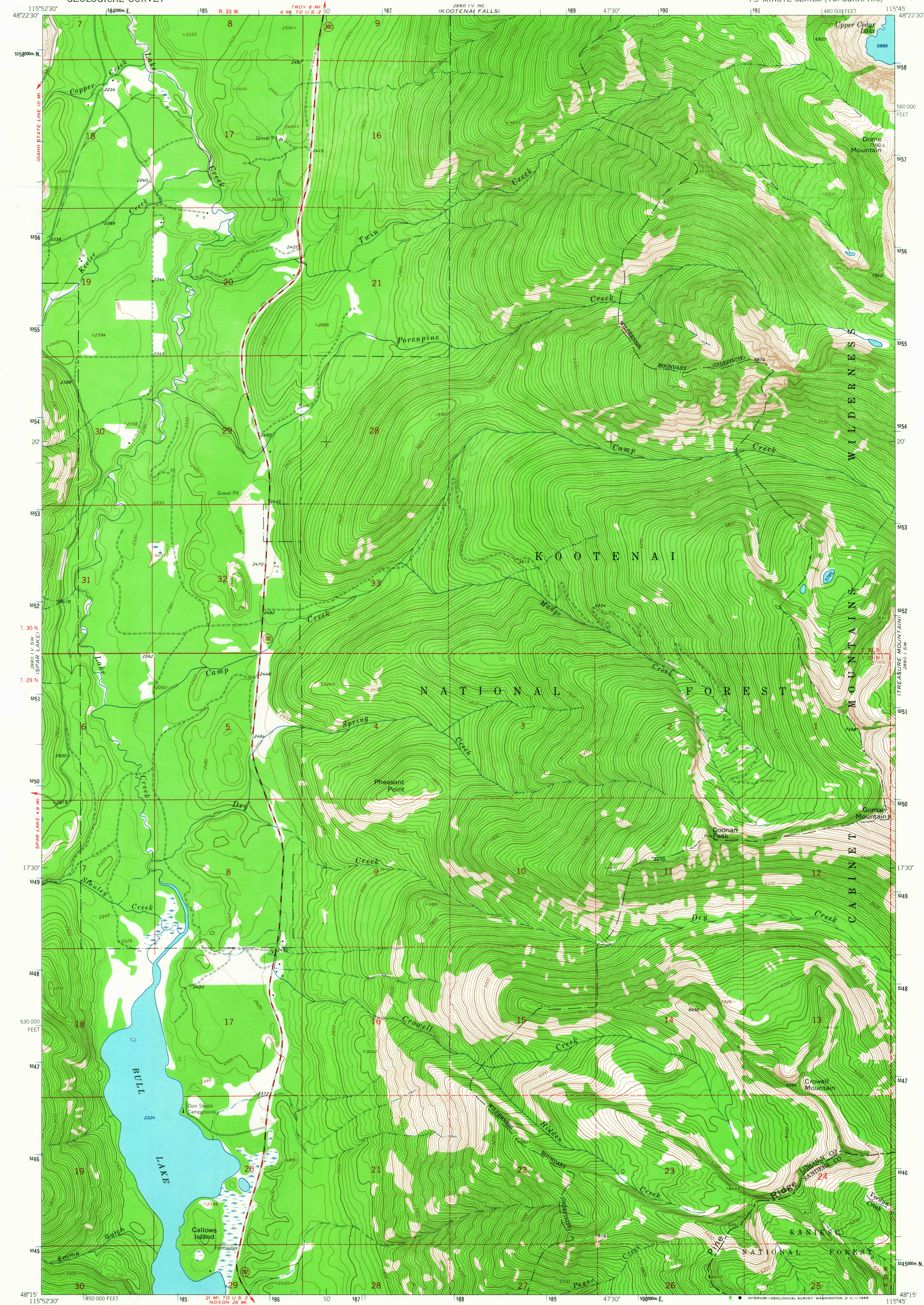


UNITED STATES
DEPARTMENT OF THE INTERIOR
GEOLOGICAL SURVEY

CROWELL MOUNTAIN QUADRANGLE
MONTANA
7.5 MINUTE SERIES (TOPOGRAPHIC)



Mapped, edited, and published by the Geological Survey

Control by USGS, USC&GS, and U.S. Forest Service

Topography by photogrammetric methods from aerial

photographs taken 1962. Field checked 1963

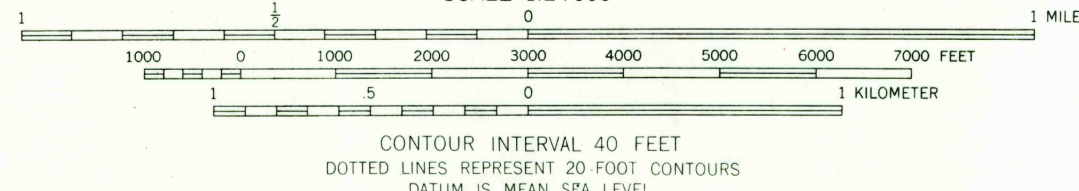
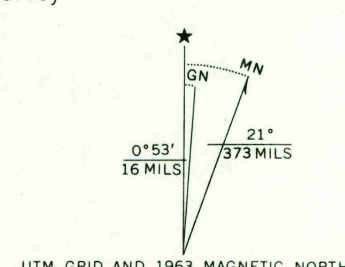
Polyconic projection. 1927 North American datum.

10,000-foot grid based on Montana coordinate system, north zone

1000-meter Universal Transverse Mercator grid ticks,

zone 11, shown in blue

Where omitted, land lines have not been established



CROWELL MOUNTAIN, MONT.

N4815-W11545/7.5

1963

AMS 2880 IV SE-SERIES V894

U.S.G.S.
TOPOGRAPHIC DIVISION

Historical File
Topographic Division

SEP 23 1966