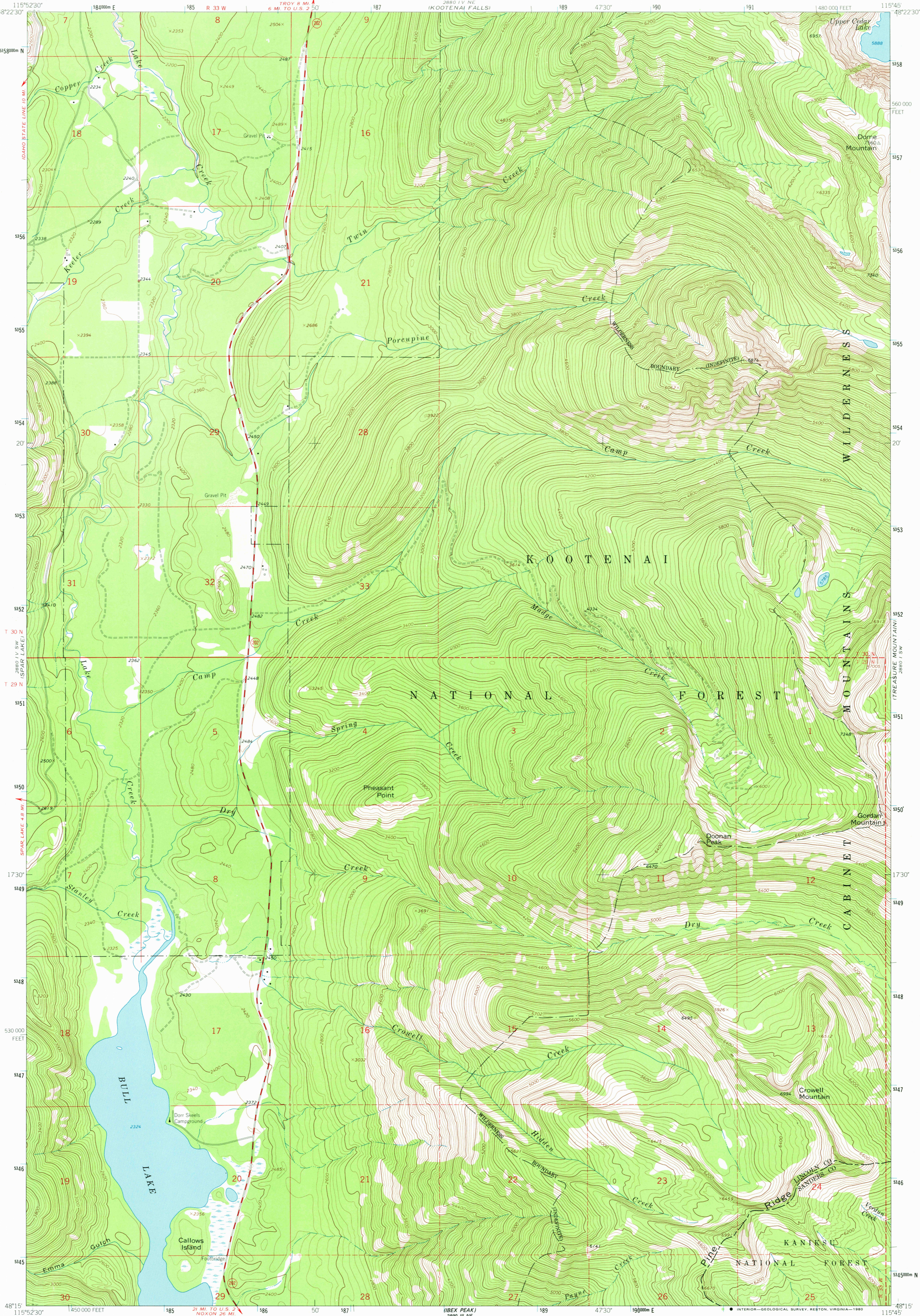


UNITED STATES
DEPARTMENT OF THE INTERIOR
GEOLOGICAL SURVEY

CROWELL MOUNTAIN QUADRANGLE
MONTANA
7.5 MINUTE SERIES (TOPOGRAPHIC)



Mapped, edited, and published by the Geological Survey

Control by USGS, USC&GS, and U.S. Forest Service

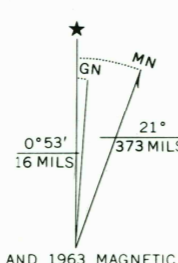
Topography by photogrammetric methods from aerial photographs taken 1962. Field checked 1963

Polyconic projection. 1927 North American datum 10,000-foot grid based on Montana coordinate system, north zone 1000-meter Universal Transverse Mercator grid ticks, zone 11, shown in blue

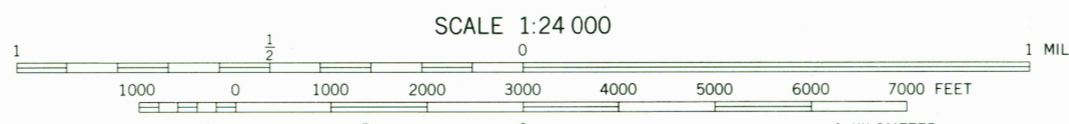
Where omitted, land lines have not been established

To place on the predicted North American Datum 1983 move the projection lines 12 meters north and 75 meters east as shown by dashed corner ticks

There may be private inholdings within the boundaries of the National or State reservations shown on this map



UTM GRID AND 1963 MAGNETIC NORTH DECLINATION AT CENTER OF SHEET



SCALE 1:24 000
CONTOUR INTERVAL 40 FEET
DOTTED LINES REPRESENT 20-FOOT CONTOURS
NATIONAL GEODETIC VERTICAL DATUM OF 1929

THIS MAP COMPLIES WITH NATIONAL MAP ACCURACY STANDARDS
FOR SALE BY U. S. GEOLOGICAL SURVEY, DENVER, COLORADO 80225, OR RESTON, VIRGINIA 22092
A FOLDER DESCRIBING TOPOGRAPHIC MAPS AND SYMBOLS IS AVAILABLE ON REQUEST



USGS
Historical File
Topographic Division

ROAD CLASSIFICATION
Medium-duty ——— Light-duty ———
Unimproved dirt ———
State Route

CROWELL MOUNTAIN, MONT.
N4815-W11545/7.5

1963

DMA 2880 IV SE-SERIES V894

SEP 26 1980

1025