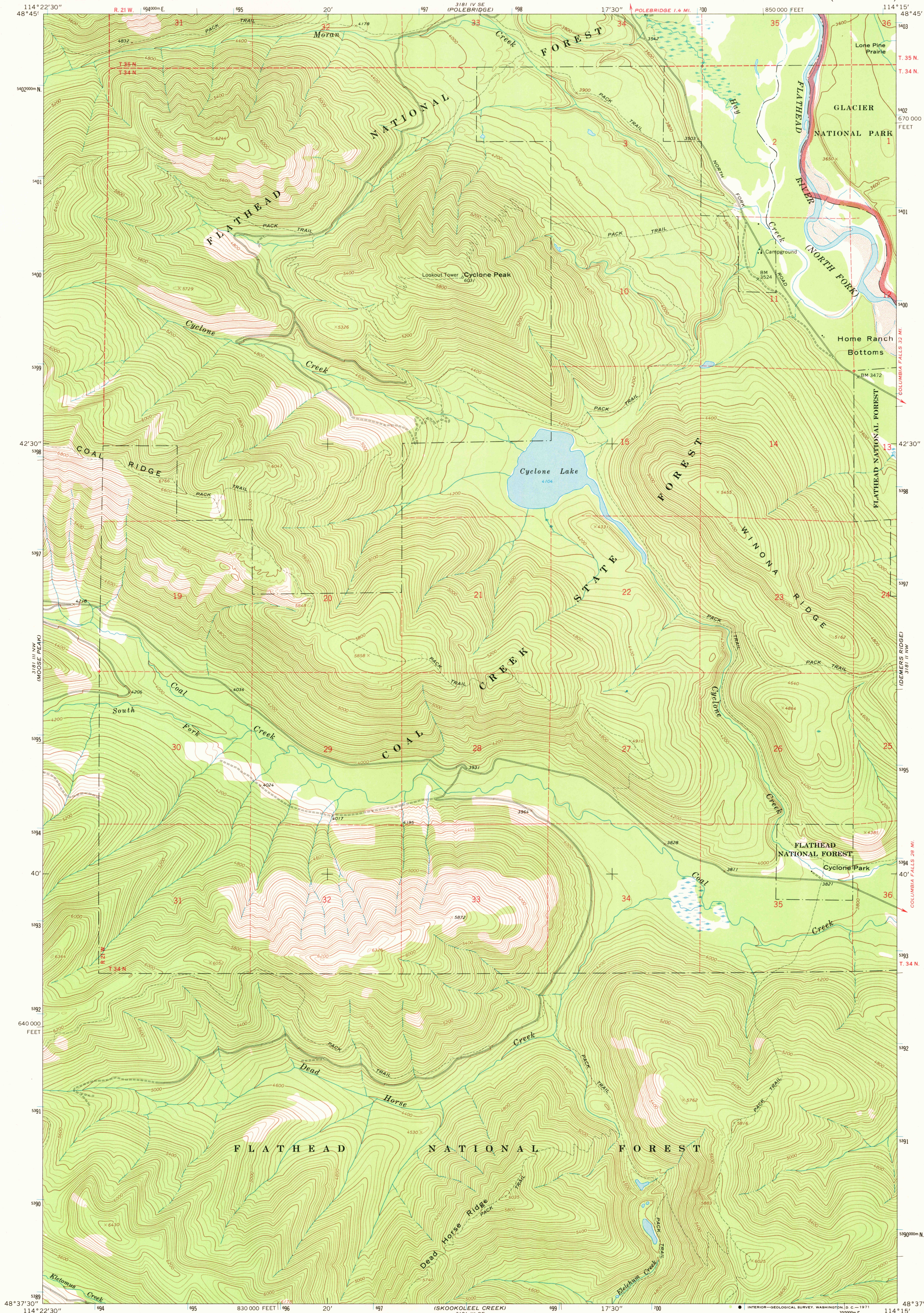
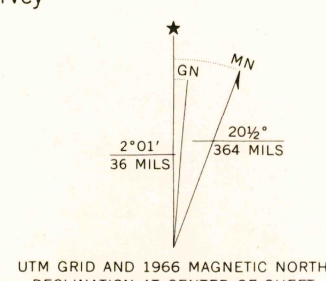


UNITED STATES
DEPARTMENT OF THE INTERIOR
GEOLOGICAL SURVEY

CYCLONE LAKE QUADRANGLE
MONTANA—FLATHEAD CO.
7.5 MINUTE SERIES (TOPOGRAPHIC)



Mapped, edited, and published by the Geological Survey
Control by USGS and USC&GS
Topography by photogrammetric methods from aerial
photographs taken 1965. Field checked 1966.
Polyconic projection. 1927 North American datum
10,000-foot grid based on Montana coordinate system,
north zone
1000-meter Universal Transverse Mercator grid ticks,
zone 11, shown in blue
Where omitted, land lines have not been established



THIS MAP COMPLIES WITH NATIONAL MAP ACCURACY STANDARDS
FOR SALE BY U. S. GEOLOGICAL SURVEY, DENVER, COLORADO 80225, OR WASHINGTON, D. C. 20242
A FOLDER DESCRIBING TOPOGRAPHIC MAPS AND SYMBOLS IS AVAILABLE ON REQUEST



U.S.G.S.

FILE COPY
TOPOGRAPHIC DIVISION

ROAD CLASSIFICATION
Light-duty ————— Unimproved dirt =====

CYCLONE LAKE, MONT.
N4837.5—W11415/7.5

1966
AMS 3181 III NE—SERIES V894

USGS
Historical File
Topographic Division

FEB 8 1971

USGS
Historical File
Topographic Division