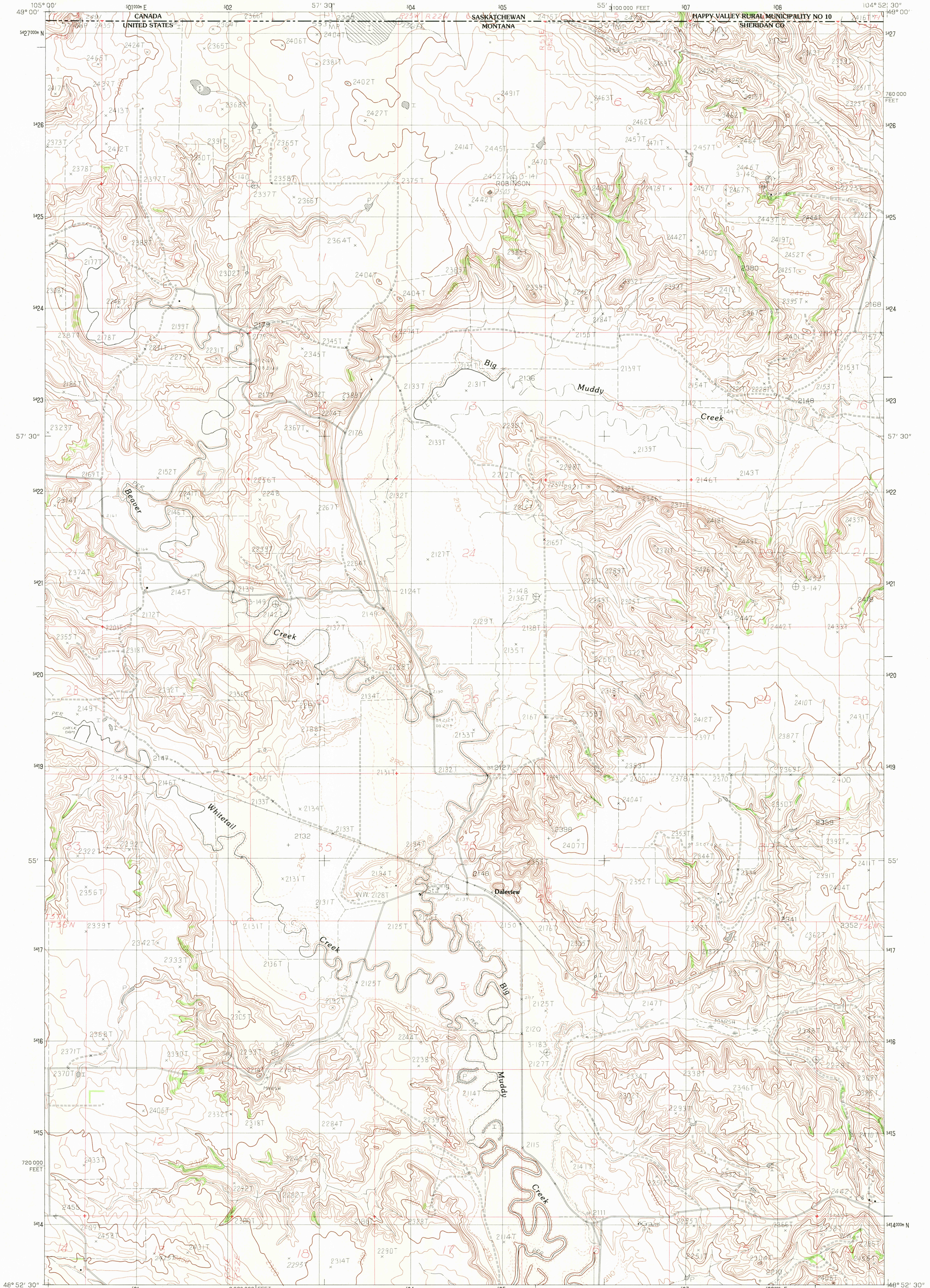


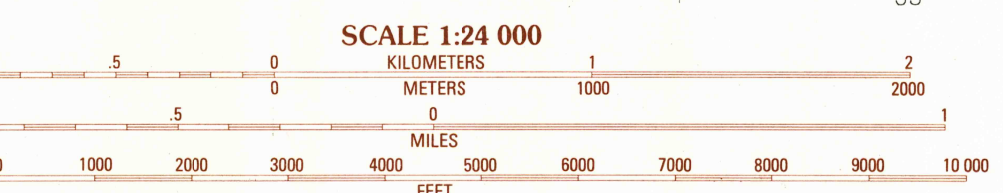
UNITED STATES
DEPARTMENT OF THE INTERIOR
GEOLOGICAL SURVEY

DALEVIEW QUADRANGLE
MONTANA-SASKATCHEWAN
7.5 MINUTE SERIES (TOPOGRAPHIC)



PRODUCED BY THE UNITED STATES GEOLOGICAL SURVEY
CONTROL BY USGS, NOS/NOAA, AND IBC
COMPILED FROM AERIAL PHOTOGRAPHS TAKEN 1974
FIELD CHECKED 1977 MAP EDITED 1983
PROJECTION LAMBERT CONFORMAL CONIC
GRID: 1000-METER UNIVERSAL TRANSVERSE MERCATOR ZONE 13
10,000-FOOT STATE GRID TICKS MONTANA, NORTH ZONE
UTM GRID DECLINATION 0°03' EAST
1983 MAGNETIC NORTH DECLINATION 14' EAST
VERTICAL DATUM NATIONAL GEODETIC VERTICAL DATUM OF 1929
HORIZONTAL DATUM 1927 NORTH AMERICAN DATUM
To place on the predicted North American Datum of 1983, move the projection lines as shown by dashed corner ticks (1 meter north and 39 meters east)
There may be private inholdings within the boundaries of any Federal and State Reservations shown on this map
Canadian portion from Department of Energy, Mines, and Resources, Canada map 72 H12

PROVISIONAL MAP
Produced from original manuscript drawings. Information shown as of date of field check.



CONTOUR INTERVAL 20 FEET
DASHED LINES REPRESENT 10-FOOT CONTOURS
To convert meters to feet multiply by 3.2808
To convert feet to meters multiply by .3048

THIS MAP COMPLIES WITH NATIONAL MAP ACCURACY STANDARDS
FOR SALE BY U.S. GEOLOGICAL SURVEY, DENVER, COLORADO 80225
OR RESTON, VIRGINIA 22092



QUADRANGLE LOCATION

ROAD LEGEND

Improved Road	Interstate Route	⊖
Unimproved Road	U.S. Route	⊖
Trail	State Route	⊖

1	2	3	4
5	6	7	8

DALEVIEW, MONT.-SASK.
PROVISIONAL EDITION 1983

RETURN TO:
USGS NMD HISTORICAL MAP ARCHIVES