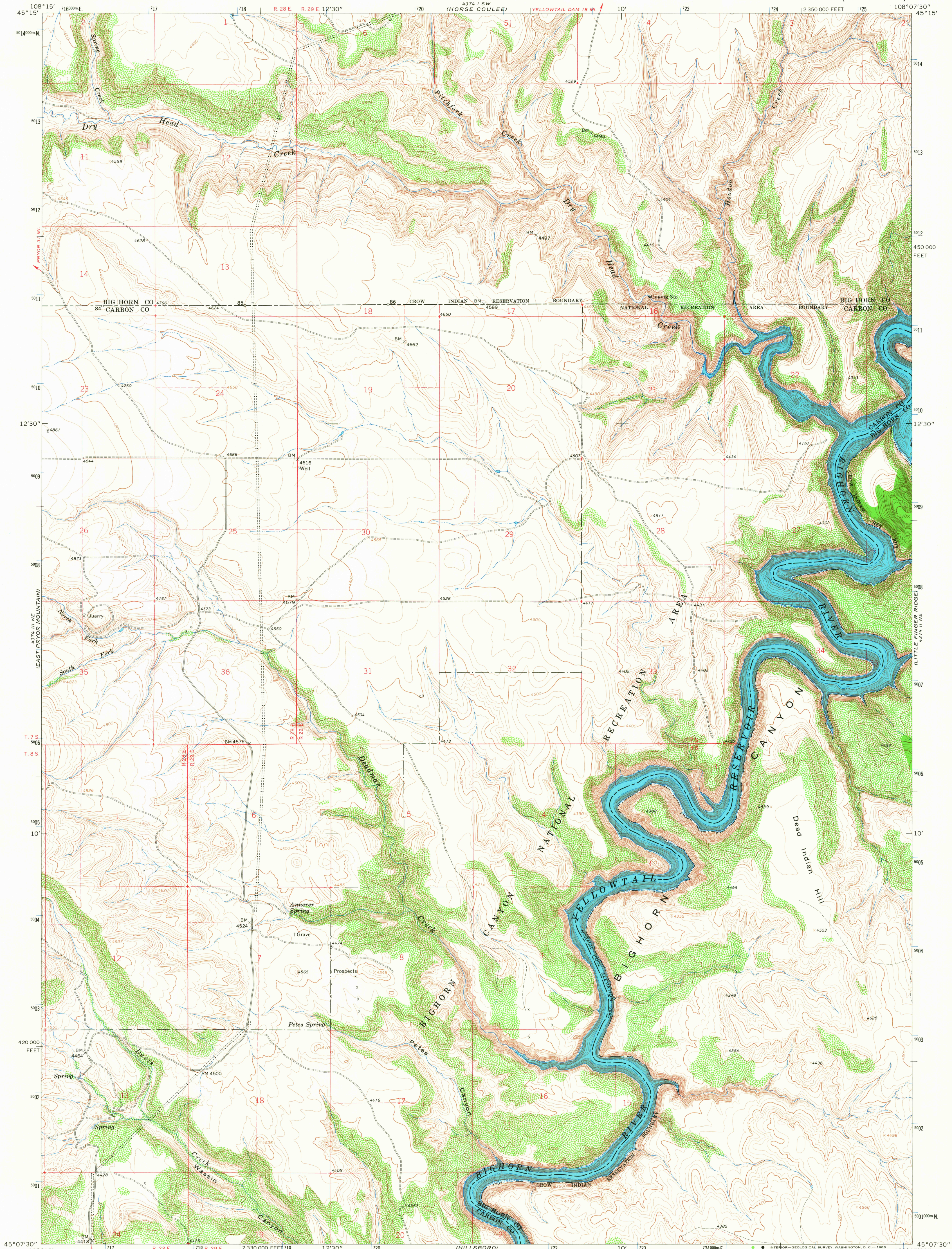
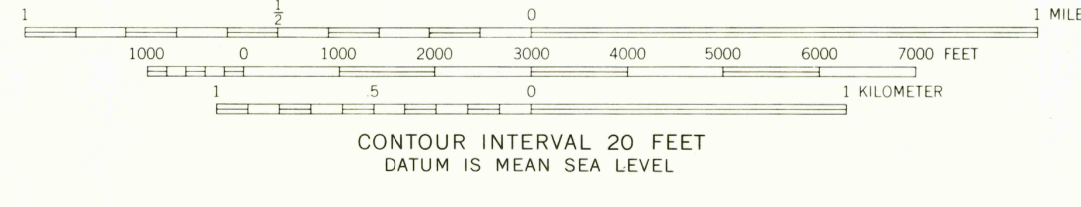
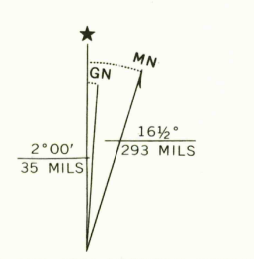


GRAVELINE DOME



Mapped, edited, and published by the Geological Survey as part of the Department of the Interior program for the development of the Missouri River Basin Control by USGS, USC&GS, and U. S. Bureau of Reclamation. Topography by photogrammetric methods from aerial photographs taken 1963. Field checked 1964. Polyconic projection. 1927 North American datum. 10,000-foot grid based on Montana coordinate system, south zone 1000-meter Universal Transverse Mercator grid ticks, zone 12, shown in blue. Fine red dashed lines indicate selected fence lines. Where omitted, land lines have not been established. Areas covered by dashed light-blue pattern are subject to controlled inundation to 3660 feet.



CONTOUR INTERVAL 20 FEET  
DATUM IS MEAN SEA LEVEL

ROAD CLASSIFICATION  
Light-duty ——— Unimproved dirt - - - - -



DEAD INDIAN HILL, MONT.  
N4507.5—W10807.5/7.5  
1964  
AMS 4374 II NW—SERIES V894

USGS  
Historical File  
Topographic Division

3055  
JUN 25 1966